

REPLACEMENT PARTS LIST			
ITEM	PART NO.	DESCRIPTION	QTY.
101M		HANDLE GRIP	1
102		CONTROL HANDLE	1
103	KIT: HANDLE RELEASE ASSEMBLY 260253	ELASTIC PIN	1
104		NUT	1
105		BOLT WITH HOLE	1
106		JACKET	1
107		PULL ROD	1
108		ELASTIC PIN	1
109		SHAFT	1
110		CAM	2
111		PEDAL	1
112		SCREW	3
113		NUT	3
114		BIG WASHER	2
115		ELASTIC WASHER	2
116		BOLT	2
117		BOLT	2
118		NUT	2
119		ROUND NUT	4
120		SPRING	2
121G		SEAT OF WHEEL	2
122		BOLT	2
123G		BRAKE	2
124		WASHER	4
125		BEARING	8
126G		WHEEL	4
127		AXLE	2
128		ELASTIC WASHER	2
129		NUT	2
130		BEARING	2
131		WASHER	2
132		BEARING	2
133G		FRAME	1
134		BOLT	1

HEAVY DUTY SCISSOR LIFT TABLES

- Fixed handle.
- Chrome plated handle and foot pedal.
- Lever release handle.
- 5" x 2" moldon polyurethane wheels with locking swivel.
- Foot operated pump.

REPLACEMENT PARTS LIST			
ITEM	PART NO.	DESCRIPTION	QTY.
135		SHAFT	1
136		RETAINING RING	4
137		AXLE OF WHEEL	2
138G		PUMP UNIT	1
139		PIN	1
140		ROLLER	1
141		RETAINING RING	1
142		PIN	1
143		WASHER	2
144		RETAINING RING	2
145G		CONNECTING ROD	1
146		CUSHION	1
147		BOLT	1
148		WASHER	1
149		ELASTIC WASHER	1
150		NUT	1
151		PROTECTING COVER	1
152		PEDAL BAR	1
153		RETAINING RING	4
154		ROLLER	2
155		ROLLER	2
156G		TABLE	1
157		RETAINING RING	2
158		SHAFT	2
159G		FORK ARM	1
160		ELASTIC WASHER	1
161		SCREW	2
162		NUT	2
163		SCREW	2
164		SUPPORT PLANK	2
165		ELASTIC PIN	2
166		PROTECTING BOARD	1
167		BOLT	4
168		BUSHING	2

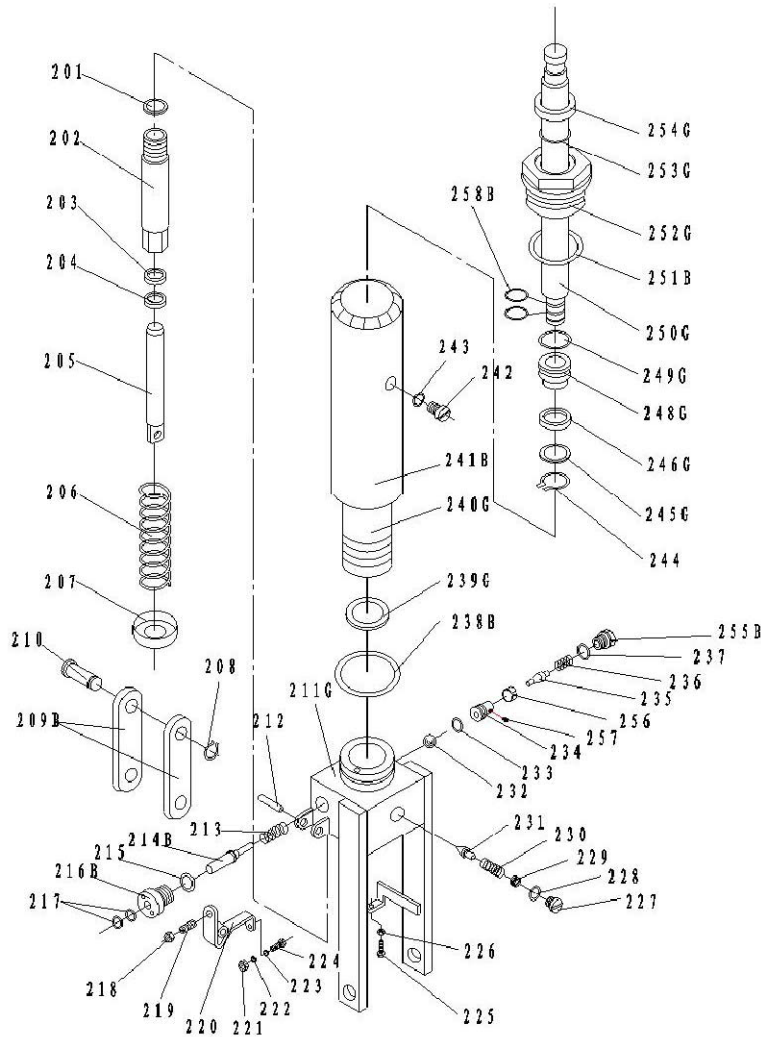
P/N 272973

Model: LT-2200SL  
 Capacity: 2200 lbs  
 Raised Height: 39"  
 Lowered Height: 15"  
 Weight: 269 lbs  
 Table Size: 20" x 40"  
 Overall Height: 39.5"  
 Overall Depth: 50"  
 Overall Width: 20"

PRINT ISSUED  
 DEC 1, 2006  
 WESCO MANUFACTURING  
 ENGINEERING DEPARTMENT

REV. EDN & DATE REVISIONS	<b>WESCO INDUSTRIAL PRODUCTS INC.</b>		NORTH WALES PENNA. 19454	
	PART NAME		DRAWN:	
	LT-2200SL SCISSOR LIFT TABLE		CHECKED:	
	TOLERANCE UNLESS OTHERWISE SPECIFIED		APP. ENGR.	
	FRACTION	3 PLACE DECIMAL	2 PLACE DECIMAL	SCALE:
± 1/64	± .005	± .01		
ANGULAR ± 1-1/2'	SHEET 1 OF 2		<b>D-272973</b>	
BREAK ALL SHARP EDGES AND REMOVE ALL BURRS				

272973



REPLACEMENT PARTS LIST			
ITEM	PART NO.	DESCRIPTION	QTY.
	273632	COMPLETE PUMP REPLACEMENT	1
201		SEAL WASHER	1
202		PUMP CYLINDER	1
203		DUST RING	1
204		Y-SEAL	1
205		PUMP PISTON	1
206		SPRING	1
207		SPRING CAP	1
208		RETAINING RING	1
209B		JOINT PLATE	2
210		PIN	1
211G		PUMP BODY	1
212		ELASTIC PIN	1
213		SPRING	1
214B		STRIKE PIN	1
215		SEAL WASHER	1
216B		AXLE SLEEVE	1
217		O-RING	2
218		NUT	1
219		SCREW	1
220		LEVER PLATE	1
221		NUT	1
222		ELASTIC WASHER	1
223		WASHER	1
224		BOLT WITH HOLE	1
225		BOLT WITH HOLE	1
226		NUT	1
227		PLUG	1
228		O-RING	1
229		ADJUSTING BOLT	1

REPLACEMENT PARTS LIST			
ITEM	PART NO.	DESCRIPTION	QTY.
230		SPRING	1
231		SPINDLE OF SAFETY VALVE	1
232		STEEL BALL	1
233		O-RING	1
234		SEAL OF PUMPING VALVE	1
235		SPINDLE OF PUMPING VALVE	1
236		SPRING	1
237		SEAL WASHER	1
238B		O-RING	1
239G		SEAL WASHER	1
240G		CYLINDER	1
241B		HOUSING	1
242		BOLT	1
243		SEAL WASHER	1
244		RETAINING RING	1
245G		WASHER	1
246G		Y-SEAL	1
247			1
248G		PISTON	1
249G		O-RING	1
250G		PISTON ROD	1
251B		O-RING	1
252G		CYLINDER CAP	1
253G		O-RING	1
254G		DUST RING	1
255B		PLUG	1
256		LIQUID THROTTLE	1
257		BOLT	1
258B		O-RING	2

PRINT ISSUED  
 DEC 1, 2006  
 WESCO MANUFACTURING  
 ENGINEERING DEPARTMENT

REV. APP. ECH & DATE REVISIONS	<b>WESCO INDUSTRIAL PRODUCTS INC.</b>		
	NORTH WALES		PENNA. 19454
	PART NAME		
	<b>LT-2200SL</b>		
	SCISSOR LIFT TABLE		
TOLERANCE UNLESS OTHERWISE SPECIFIED			
FRACTION	3 PLACE DECIMAL	2 PLACE DECIMAL	
± 1/64	± .005	± .01	
ANGULAR ± 1-1/2'	SHEET 2	OF 2	
BREAK ALL SHARP EDGES AND REMOVE ALL BURRS			
DRAWN:			
CHECKED:			
APP. ENGR.			
SCALE:			
<b>D-272973</b>			