

ATTENTION: TO ENSURE SAFE AND EASY USE OF YOUR WESCO INDUSTRIAL LIFT TABLE, READ THESE INSTRUCTIONS BEFORE USING.

Description

The Wesco hand crank lift tables are designed for use in a variety of environments. Each unit comes equipped with a steel platform, adjusting knob, base frame, 5" polyurethane or cast iron casters, and all mounting hardware.



Figure 1

This product is distributed by:

Wesco Industrial Products, LLC

1250 Welsh Road

North Wales, PA 19454

Tel: 215-699-7031 Fax: 215-699-3836

Contact the factory for parts information and ordering.
Visit us on the web at www.wescomfg.com

Unpacking

When unpacking the Wesco Product, check carefully for shipping damage and missing parts. If damage has occurred or any parts are missing, file a claim with the delivering carrier within 24 hours and notify the dealer from whom the unit was purchased.

General Safety Information

The Wesco Hand Crank Lift Tables are designed for specific functions. To ensure proper use, the following instructions must be adhered to:

- (1) DO NOT overload the Lift Table beyond the rated capacity of the unit: **See Table 1 Below**
- (2) Do not stand, sit, or climb on lift.
- (3) Do not use unit to lift personnel.
- (4) Remove load before performing any repairs on the table.
- (5) Do not operate or move with unstable loads. Load must be evenly distributed on table to ensure maximum stability.
- (6) Never leave the lift unattended while in operation.
- (7) Transport loads in the lowered position only.
- (8) Do Not continue to operate the controls if unit is not moving.
- (9) Use only maintenance parts supplied or approved by the manufacturer.
- (10) Consult factory before adding or performing any modification to the original equipment.

Specifications

P/N	Model	Load Capacity (lbs)	Casters	Platform Size (in.)		Raised Height (in.)	Net Weight (lbs)
				L	W		
274680	HCLT-2436-CI	2200	Cast Iron	24	36	42	321
274681	HCLT-3048-CI	2200	Cast Iron	30	48	42	421
274683	HCLT-2436-P	2200	Polyurethane	24	36	42	317
274684	HCLT-3048-P	2200	Polyurethane	30	48	42	420

Table 1

Operation

- (1) Attach hand crank. (Note: Position handle for "Fast" speed or "Slow" speed options)
- (2) Turn clockwise to raise unit and counter clockwise to lower unit. (Note: Directions are reversed on opposite side of unit).

Installation

Casters

- (1) Two 5" dia. Swivel casters are installed on one end of base frame (handle end of platform) and two 5" dia. rigid casters are installed on other end.
- (2) Place the caster base plate into the base frame bracket.
- (3) Insert M8x35 bolt through the hole in the base frame to fix the caster.
- (4) Place M8 self-lock nut on each hole and tighten securely.

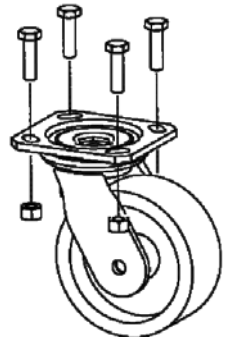


Figure 2

Floor Lock

- (1) Align mounting plate of floor lock with predrilled holes on bottom of frame.
- (2) Install floor lock with foot pedal bracket facing out.
- (3) Insert four M8x35 bolts through top of frame.
- (4) Place four M8 lock nuts on each bolt, then tighten securely.

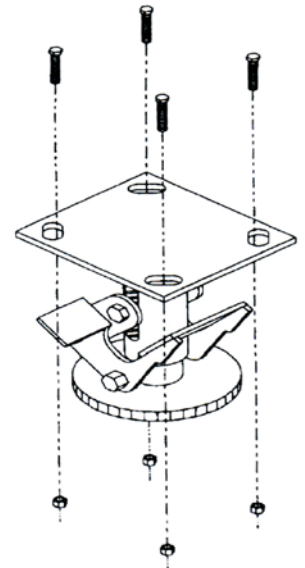


Figure 3

ATTENTION: TO INSURE SAFE AND EASY USE OF YOUR WESCO INDUSTRIAL LIFT TABLE, READ THESE INSTRUCTIONS BEFORE USING.

Replacement Parts Diagram

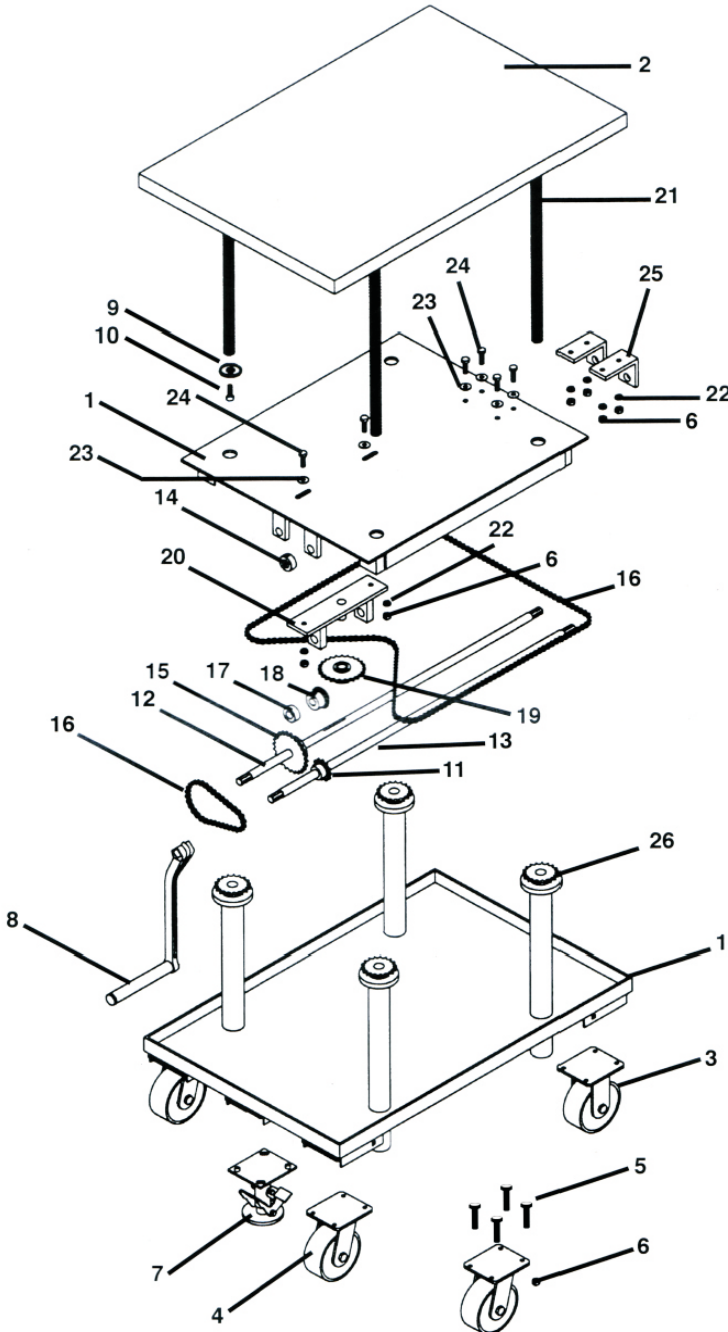


Figure 4

Replacement Parts List

Item	P/N	Description	Qty.
1		Base Frame Weldment	1
2		Platform Frame Weldment	1
3	274692	5" Rigid Caster (Cast Iron)	2
	274693	5" Rigid Caster (Polyurethane)	
4	274690	5" Swivel Caster (Cast Iron)	2
	274691	5" Swivel Caster (Polyurethane)	
5		Bolt M8x35	16
6		Self-Lock Nut M8	20
7		Foot Lock	1
8		Crank Handle	1
9		Washer	4
10		Bolt M6x8	4
11	274679	Sprocket (12 Teeth)	1
12	274678	Shaft, High Speed	1
13	W/ IT.11	Shaft, Slow Speed	1
14	274677	Shaft Collar, Split Shaft	1
15	W/ IT.12	Sprocket (24 Teeth)	1
16		Chain 08B	1
17	274676	Spacer, High Speed Shaft	1
18	274675	Gear Bevel	1
19	274674	Gear Assembly, Bevel and Sprocket	1
20	274673	Bracket, Sub-Assembly Tension Adj.	1
21		Lifting Screw	4
22		Spring Washer 10	4
23		Flat Washer 10	4
24		Bolt M10x30	4
25		Bearing Bracket	2
26		Sprocket Lifting	4

Table 2

LIMITED WARRANTY

WESCO INDUSTRIAL PRODUCTS (WESCO) warrants to the purchaser of this product for a period of ninety (90) days from the date of purchase that this product shall be free of defects in material and/or workmanship, as follows:

1. WESCO will supply, at no charge, new or rebuilt replacements for any part that fails through a defect in material and/or workmanship during the warranty period. To obtain warranty service, you must deliver the product prepaid, to the WESCO factory.

2. This warranty does not cover any product or product part which has been subject to accident, misuse, abuse or negligence. WESCO shall only be liable under this warranty if the product is used the manner intended by the manufacturer as specified in the written instructions furnished with this product.

REPAIR OR REPLACEMENT AS PROVIDED UNDER THIS WARRANTY IS THE EXCLUSIVE REMEDY OF THE PURCHASER. ANY EXPRESS WARRANTY NOT PROVIDED IN THIS WARRANTY DOCUMENT, AND ANY REMEDY FOR BREACH OF CONTRACT THAT, BUT FOR THIS PROVISION, MIGHT ARISE BY IMPLICATION OR OPERATION OF LAW, IS HEREBY EXCLUDED AND DISCLAIMED. UNDER NO CIRCUMSTANCES SHALL WESCO BE LIABLE TO PURCHASER OR ANY OTHER PERSON FOR ANY INCIDENTAL OR CONSEQUENTIAL DAMAGES, WHETHER ARISING OUT OF BREACH OF WARRANTY, EXPRESS OR IMPLIED, A BREACH OF CONTRACT OR OTHERWISE. EXCEPT TO THE EXTENT PROHIBITED BY APPLICABLE LAW, ANY IMPLIED WARRANTY OF MERCHANTABILITY AND FITNESS FOR ANY PARTICULAR PURPOSE ARE EXPRESSLY LIMITED IN DURATION TO THE DURATION OF THIS LIMITED WARRANTY.

Some states do not allow the exclusion or limitation of incidental or consequential damages, or allow limitations on how long any implied warranty lasts, so the above limitations may not apply to you. This warranty gives you specific legal rights, and you may also have other rights which vary from state to state.