



Instruction Manual

Electric Non-Telescoping High Lift Truck

Part Number: 272460 & 272461



Note: Operator MUST read and understand these operating instructions before using this High Lift Truck.

TABLE OF CONTENTS

1	General Information	2
1.1	Description.....	2
1.2	Specifications.....	2
2	Safety Information.....	2
3	Assembly.....	2
4	Hydraulic Valve Adjustment.....	2
5	Operation.....	4
6	Battery Charging & Replacement.....	5
7	Maintenance.....	7
8	Trouble Shooting.....	8
9	Hydraulic & Circuit Diagrams.....	9
9.1	Hydraulic Flow Diagram (Models Manufactured Before 2010).....	9
9.2	Circuit Diagram (Models Manufactured Before 2010).....	9
9.3	Hydraulic Flow Diagram (Models Manufactured Between 2010 & 2015).....	10
9.4	Circuit Diagram (Models Manufactured Between 2010 & 2015).....	10
9.5	Hydraulic Flow Diagram (Models Manufactured After 2015).....	11
9.5	Circuit Diagram (Models Manufactured After 2015).....	11
10	Part Information (Models Manufactured Before 2010).....	12
10.1	Handle Part Diagram.....	12
10.2	Handle Part List.....	12
10.3	Frame Part Diagram.....	13
10.4	Frame Part List.....	13
10.5	Pump Part Diagram.....	14
10.6	Pump Part List.....	14
10.7	Steer Wheel Assembly Part Diagram.....	15
10.8	Steer Wheel Assembly Part List.....	16
10	Part Information (Models Manufactured Between 2010 & 2015).....	17
10.1	Frame & Handle Part Diagram.....	17
10.2	Frame & Handle Part List.....	18
10.3	Pump Part Diagram.....	19
10.4	Pump Part List.....	20
11	Part Information (Models Manufactured After 2015).....	21
11.1	Handle Part Diagram.....	21
11.2	Handle Part List.....	21
11.3	Frame Part Diagram.....	22
11.4	Frame Part List.....	22
11.5	Pump Part Diagram.....	23
11.6	Pump Part List.....	24
11.7	External Charger Part Diagram.....	25
11.8	External Charger Part List.....	26

ATTENTION: TO INSURE SAFE AND EASY USE OF YOUR HIGH LIFT TRUCK,
READ THESE INSTRUCTIONS ENTIRELY BEFORE USING.



WARNING: The battery in this product contains lead. The State of California under Proposition 65 has determined that exposure to lead is known to cause cancer or birth defects or other reproductive harm. Please wash hands after use.

1. GENERAL INFORMATION

1.1 DESCRIPTION

Thank you for purchasing an Electric Non-Telescoping High Lift Truck. This truck has been designed for transporting and horizontal lifting of loads of up to 2,200 lbs. The electric high lift trucks feature a one year pump warranty and a battery powered hydraulic lift system that is operated with fingertip controls. It can greatly reduce labor and increase working efficiency and is an efficient tool for various work environments.

1.2 SPECIFICATIONS

Model	272460	272461
Capacity	2,200 lbs	2,200 lbs
Weight	367 lbs	372 lbs
Fork Lowered Height	3.3"	3.3"
Fork Raised Height	31"	31"
Single Fork Width	6.5"	6.5"
Fork Length	45"	45"
Overall Width	21"	27"
Overall Length	60"	63"
Overall Height	48.5"	48.5"
Telescoping	No	No
Steering & Load Wheels	Polyurethane	Polyurethane

Materials and specifications are subject to change without notice.

2. SAFETY INFORMATION

- 1) Read the manual carefully before operation. Go through every procedure as required in the manual.
- 2) Lift the fork to its full range a few times before use to release the air in the hydraulic system.
- 3) Do not lift or pull personnel with the truck.
- 4) Do not operate the unit on sloped or tilted surfaces.
- 5) Do not put your hand or foot under the fork or into the moving parts
- 6) Put all loads in the center of the fork.
- 7) The safety valve in the pump station will automatically open when the unit becomes overloaded. If this occurs, don't try to lift the load any more by pushing the "UP" button. This will reduce the lifespan of the pump unit.
- 8) Power off the unit when not in use.
- 9) To replace or fill hydraulic oil, the fork should be lowered to its lowest position. The oil to be used should be clean and filtered. The condensation point of the oil should be $\leq -4^{\circ}\text{F}$ (-20°C), and the motion viscosity should be 20–30 cst.

Note: Hydraulic Oil ISO VG 32 and multipurpose lubricating grease ZG2# or 3# are recommended for maintenance of this unit.

ATTENTION: TO INSURE SAFE AND EASY USE OF YOUR HIGH LIFT TRUCK,
READ THESE INSTRUCTIONS ENTIRELY BEFORE USING.

3. INITIAL ASSEMBLY

- 1) Insert the handle arm (Item 1, Fig. 2) into the pump piston, then use a hammer to insert the axle with hole into the hydraulic pump and handle arm from right to the left (Fig. 3).
- 2) Set the control lever of the handle to the 'LOWER' position, then pass the adjusting nut, adjusting bolt through the hole of the axle with your hand (Fig. 1).
- 3) Press the handle arm down; take away the pin (Item 2, Fig. 2).
- 4) Set the control lever of the handle to 'LIFT' position, then raise the lever plate with the pin (Item 2, Fig. 2) and insert the adjusting bolt into the front slot of lever plate. Note: Keep the adjusting nut under the lever plate.
- 5) Use a hammer to insert the 2nd dowel pin (Item 5, Fig. 2) into the 2nd hole of the axle. The draw-bar is now assembled to the pump.
- 6) Connect the control cable. Fix the cable at the pump side in a way that the cable holder can be turned. Fix the cable before the plug with the pre assembled cable strip.

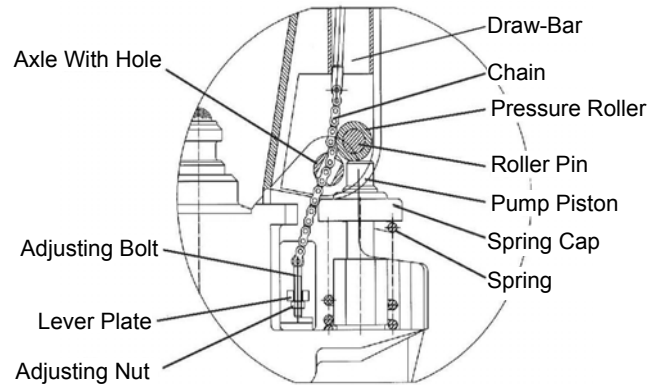


Figure 1 Side View with Labels

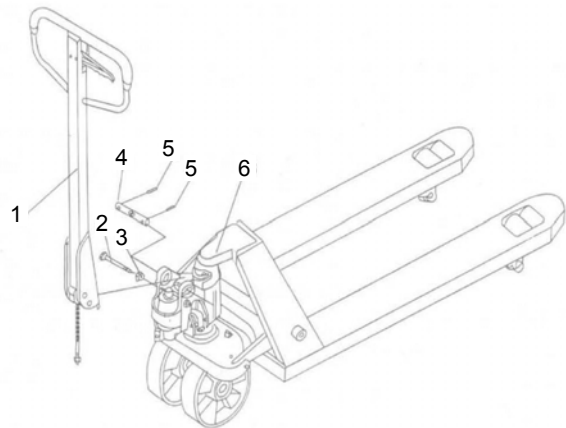


Figure 2 Handle Assembly
(1-Handle Arm/2-Pin/3-Nut/4-Axle with Hole/
5-Dowel Pin/6-Chassis with Pump Unit)

4. HYDRAULIC VALVE ADJUSTMENT

On the handle of your pallet truck, you will find the control lever, which can be regulated in three positions:

Lower : handle up, the lever moves back to the neutral

Neutral : handle in center position

Lift : handle down

If necessary, you can adjust the lever according to following steps (Fig. 4):

- If the forks elevate while pumping in the **Neutral** position, turn the adjusting nut on the adjusting bolt clockwise until pumping does not raise the forks and the **Neutral** position works properly.
- If the forks descend while pumping in the **Neutral** position, turn the adjusting nut counter-clockwise until the forks do not lower.
- If the forks do not descend when the control handle is in the **Lower** position, turn the adjusting nut clockwise until raising the control handle lowers the forks. Then check the **Neutral** position according to fig. 4 and be sure that the adjusting nut is in the proper position.
- If the forks do not elevate while pumping in the **Lift** position, turn the adjusting nut counter-clockwise until the forks elevate while pumping in the **Raise** position. Then check the **Lower** and **Raise** position.



Figure 3 Axle Assembly

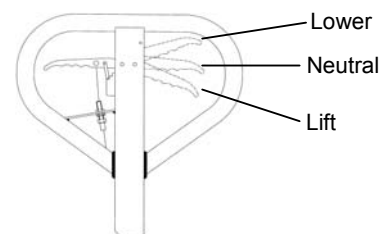


Figure 4 Lever Positions

5. OPERATION

5.1 Parking

Lower the forks to the lowest position and park the truck on a smooth and even level ground. If equipped with a brake use the brake for parking the truck according to the description further below.

5.2 Lifting

Check that the load does not exceed the loading capacity of the pallet truck. Roll the pallet truck with its forks slowly under the pallet/load until the back end of the fork rests against the load. Shift the operating lever down to the Lifting position.

Lift the load by up- and down movements of the handle. The load must be evenly distributed across both forks.

The truck is equipped with 2 supports. At a height of approx. 15-3/4" (400 mm), the supports automatically set onto the floor. Once the supports are in place, further movement is not allowed. For the electric version press the lifting button (Fig. 1, pos. 9) to perform the lifting function.

5.3 Lowering

DO NOT PUT FOOT OR HAND UNDER OR INTO THE LIFTING MECHANISM.

Lower the load by shifting the operating lever up to the lowering position carefully. By releasing the lever, the lowering movement will stop. Ensure there is adequate clearance behind it and then move the pallet truck away.

Lowering can also be achieved by the pedal on the side of the truck.

5.4 Moving

- Do not operate the truck on a slope or inclined surface.
- Watch out for different floor levels when moving the unit.
- Make the load stable to prevent it from falling off the unit.

Move the truck by pushing or pulling the handle. The handle is connected to the steering rollers. The wheels are steered automatically by moving or steering the handle.

5.5 Malfunctions

If there are any malfunctions or the truck is inoperative, please stop using it. Place the truck at a safe place and avoid further usage. Immediately inform the manager and, or call your distributor.

ATTENTION: TO INSURE SAFE AND EASY USE OF YOUR HIGH LIFT TRUCK,
READ THESE INSTRUCTIONS ENTIRELY BEFORE USING.

6. **BATTERY CHARGING AND REPLACEMENT**

- Only qualified personnel are allowed to service or charge the batteries. The instructions of this manual and from the battery manufacturer must be observed.
- 12V/52Ah
- These batteries are maintenance free; re-filling is prohibited.
- Park the truck securely before starting charging or installing/changing the batteries
- Before finishing maintenance work, make sure, that all cables are connected correctly.

6.1 Replacement

FOR REPLACEMENT YOU NEED TO LIFT THE TRUCK. BLOCK THE SCISSOR MECHANISM TO PREVENT LOWERING!

Park the truck securely, switch off the truck with the key switch and remove the emergency plug. Loosen the upper cover with the 2 screws. Also remove the backside fixing bar (also with 2 screws).

Disconnect the terminals (Fig. 4) and take the battery out.

The installation is in the reverse order of the removal. Please connect the positive terminals firstly; otherwise the truck could be damaged.

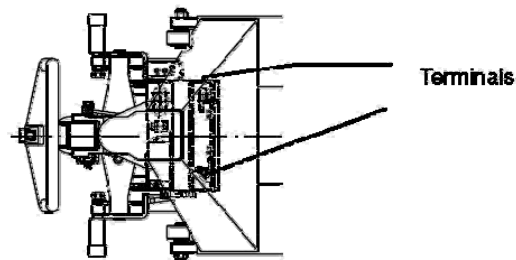
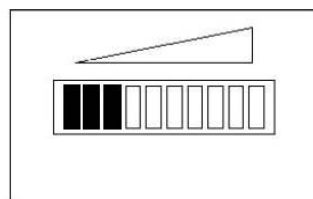


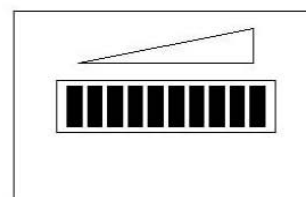
Fig.4: Battery Replacement

6.2 Battery indicator

Discharge status is indicated by ten red LED segments.



Battery Discharged



Battery Fully Charged

Fig.5: Battery Discharge Indicator

- When the battery is properly charged, all the LED illuminate. During discharge successively less LEDs lights up.
- When the last 3 LEDs are lit, the battery is fully discharged. The battery must be charged before further operation, otherwise the lifetime of the battery will be reduced and/or the battery could be damaged!

ATTENTION: TO INSURE SAFE AND EASY USE OF YOUR HIGH LIFT TRUCK,
READ THESE INSTRUCTIONS ENTIRELY BEFORE USING.

6. BATTERY CHARGING AND REPLACEMENT (CONTINUED)

6.3 Charging

Using Onboard Charger

- The attached automatic charger is only available for the optional voltage of 110V or 220V as referred.
- The exactly charge status can be only checked from the discharge indicator. To control the status, the charging must be interrupted and the truck must be started.
- Park the truck at a dedicated secured area with a dedicated power supply. Lower the forks and remove the load. Switch the truck off and connect the main power connector to the power supply. The charger starts charging the battery.
- This Charger features a three-stage charging function with automatic switching from 1st stage to the next stage.

Stage 1: Constant current charging

Stage 2: Constant voltage charging

Stage 3: Floating charging

Following the increase of the electricity in the battery, the charging electrical current is reducing, the charger steps into the 3rd stage automatically.

1.) SPECIFICATIONS

Input Volt: 150 – 260 V, AC 50 – 60 Hz

Output Volt: 145 V ±0.3

Output Current: 5 – 6 Amp

Applicable Ambient Temperature: –15 - +65□

2.) OPERATION

- a. Insert the plug of the power cable into the socket of the power line. The Power Indicator lights (red) and then Charging Indicator turns on red, indicating the battery is in charging.
- b. When Charging Indicator turns from red to green, the battery is nearly full. Charging can continue in the Floating Stage.
- c. When the battery is fully charged, disconnect the Power Cable from the Power Line.

3.) WARNING

- a. During charging the truck can't be lifted electrically!
- b. Do not use the truck in wet areas or conditions.

Table 3: Charging LED

LED- Signal	Function
Red	Battery discharged
Green	Fully charged

When charging is finished, disconnect the connector from the socket and place it in the designated pocket.

External Charger

The external charger automatically selects the charging state according to the detected battery voltage and converts into floating charge state when the battery is fully charged.

Disconnect the Emergency plug and connect the charger plug with the battery sided connector.

Connect the power cord of the charger to the main power supply. After switching on the charger, the charging starts automatically.

7. MAINTENANCE

Only qualified and trained personnel are allowed to do service on this truck.

- Before servicing the truck, remove the load and lower the forks to the lowest position.
- Completely immobilize the truck before working on components that might pinch fingers or hands if movement were allowed.
- Use approved original spare parts from your dealer.
- Please consider that leakage of hydraulic fluid can cause failures and accidents.
- It is recommended to allow only trained service technicians to adjust the pressure valve.
- All bushings and bearings have been lubricated at the factory. To increase their life, regular maintenance is recommended. Using the appropriate grease for the application and lubricate each grease fitting every 6 months.
- Harsh environments may require more frequent maintenance.

7.1 Maintenance Checklist

DAILY

Check the truck on the following points before operation.

Remove load from truck and lower the forks to the lowest position.

DO NOT USE THE TRUCK IF ANY MALFUNCTION OR FAULT IS FOUND.

- Check for visible structural deformation or cracks of arms, forks, or any other component; and unusual noise or binding of the lifting mechanism.
- Check if there is any oil leakage.
- Check the vertical creep of the lifting mechanism.
- Check for smooth movement of the wheels.
- Check if there are any particles or damages on the wheels.
- Check if all the bolts and nuts are tightened firmly.

MONTHLY

- All bearings and shafts are provided with long- life grease at the factory. Long-life grease should be applied to the lubrication points at monthly intervals or after each time the truck is cleaned.
- Clean off dirt and debris.

EVERY THREE MONTHS

- Check the set-up of the drain-valve

ANNUALLY

- Change the oil (more frequently if color has substantially darkened or feels gritty). The required hydraulic fluid type is ISO VG32, its viscosity should be 30cSt at 40°C, total volume is about 33.8-44 fl oz (1-1.3 L).
- Check all parts of the truck for wear and replace defective parts where necessary.

NOTE: If hydraulic oil is milky white in color, water is in the hydraulic system. Change the hydraulic oil immediately.

7.2 Deaerating the Hydraulic System

Air may find its way into the pump during transportation, tilting or usage on uneven ground. It can result in the forks no longer rising while pumping in the 'Lift' position. The air can be removed in the following way:

Move the control handle to the **Lower** position, move then the tiller down several times. Thereafter normal operation can be resumed.

7.3 Check and Refill Hydraulic Oil

- 1) Ensure forks are in lowered position.
- 2) Lay pallet truck on side. Position drain plug of hydraulic cylinder up.
- 3) Remove the screw plug.
- 4) Add hydraulic oil until level of oil is at bottom of hole.
- 5) Replace drain plug, upright the truck

ATTENTION: TO INSURE SAFE AND EASY USE OF YOUR HIGH LIFT TRUCK,
READ THESE INSTRUCTIONS ENTIRELY BEFORE USING.

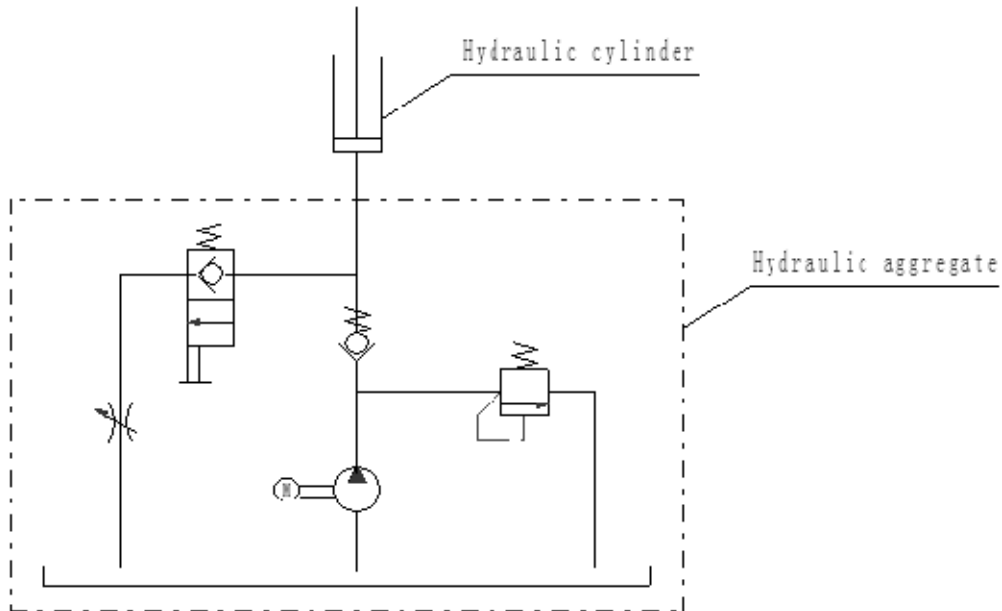
8. TROUBLESHOOTING

	Failure	Cause	Solution
1	Motor and hydraulic pump do not operate	Defective fuse FU1 and/or FU2	Replace the fuse
		Loose or unconnected plug	Reconnect
		Motor is burned out	Replace motor
2	The high-lift pallet truck does not lift the load, although the pump is working perfectly	Load is too heavy, overload valve is actuated, Control lever is out of adjustment	Reduce the load
		Lowering valve does not close any more or the valve face is not sealed because of dirt, piston rod is starting to rust	Clean or replace it
		Electric circuit is disconnected	Check the wiring
		Electromagnetic switch KM is defective	Replace the contactor KM
		Lifting switch is obstructed, resp. defective	Check resp. replace the lifting switch
		Hydraulic pump does not work	Check the pump
3	Raised load is lowered on its own.	Leakage in the hydraulic system	Seal
		Lowering valve does not close any more or the valve unit is not sealed because of dirt	Clean or replace
		Incorrect valve set-up.	Adjust lowering valve
		Pressure relief valve (pump) is leaky (pump turns slowly backwards.)	Clean or replace the valve
4	Oil loss on hydraulic cylinder	Sealing elements are worn	Replace sealing elements
5	The raised load is lowered too slowly	Temperature too low – the hydraulic system oil is too thick	Find a warmer location
6	Fork does not raise to upper position	Insufficient oil in the tank	Refill with oil (while the fork is lowered)
		Battery discharged	Charge the battery
7	Battery capacity too low	Battery is not charged enough	Recharge
		Battery is defective	Replace the battery
8	Battery cannot be charged	Fuse FU2 is defective	Replace FU2
		Battery resp. charger defective	Replace battery resp. charger
9	Battery discharges too quickly	Silted battery	Replace battery
		Sulphating or other failure in the battery.	Replace battery
		Accidental ground contact in the electric system or battery.	Repair or replace battery

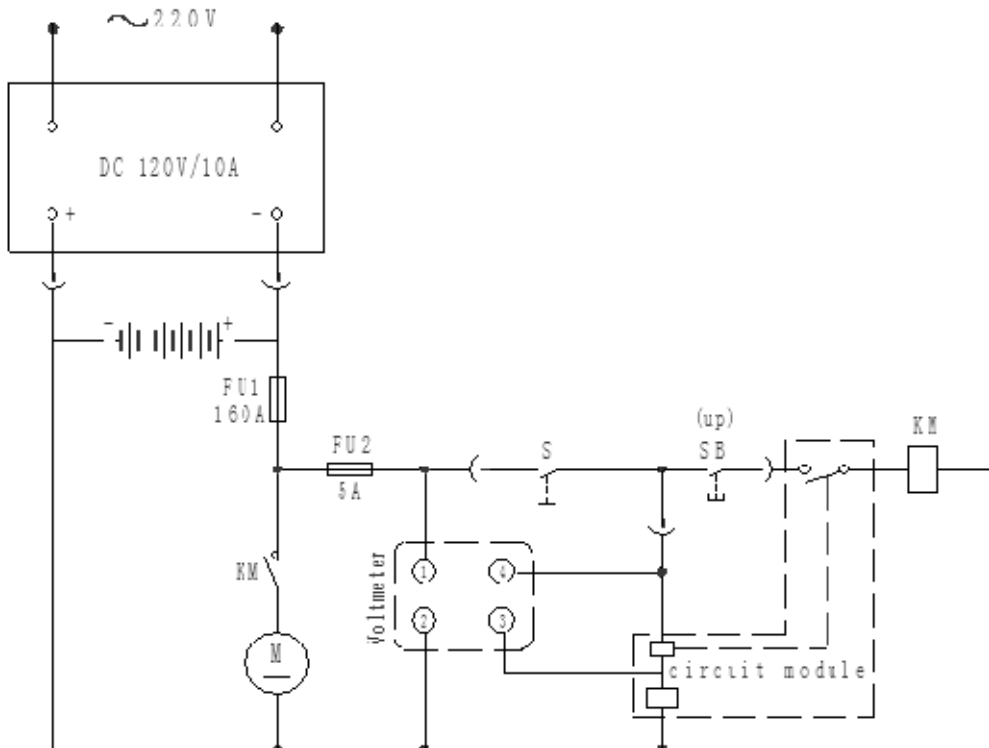
ATTENTION: TO INSURE SAFE AND EASY USE OF YOUR HIGH LIFT TRUCK,
READ THESE INSTRUCTIONS ENTIRELY BEFORE USING.

9. HYDRAULIC & CURCUIT DIAGRAMS

9.1 Hydraulic Flow Diagram (*Models Manufactured Before 2010*)



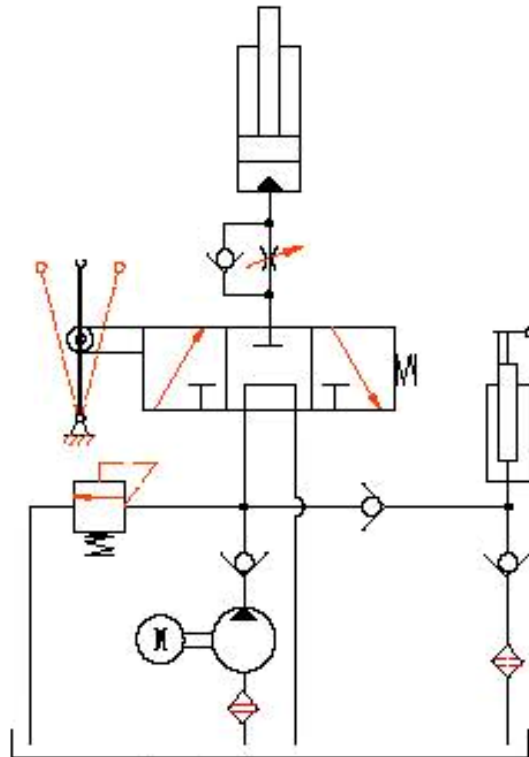
9.2 Circuit Diagram (*Models Manufactured Before 2010*)



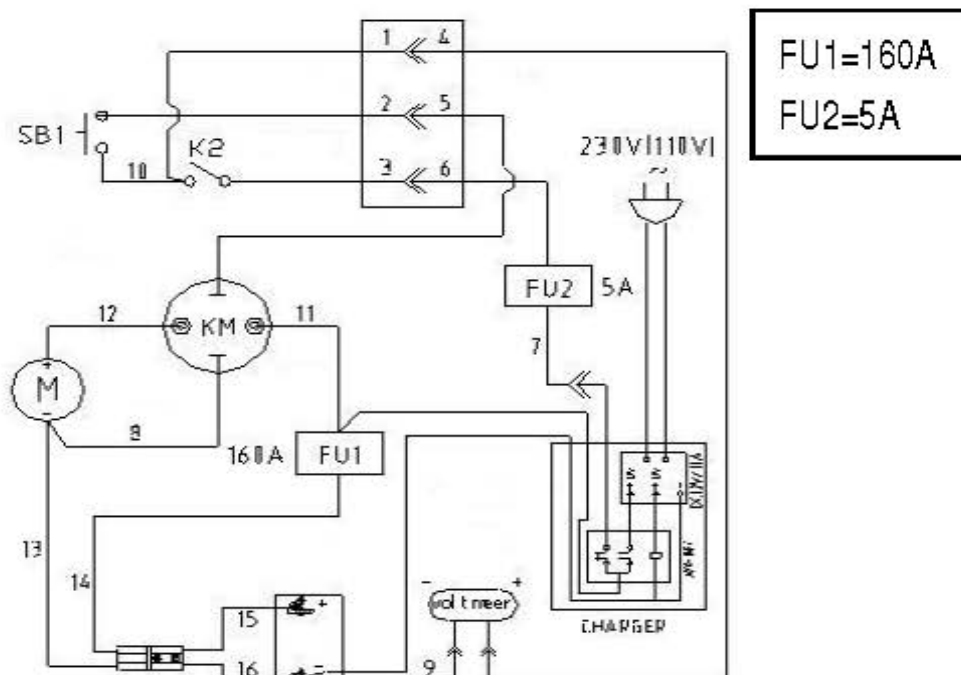
ATTENTION: TO INSURE SAFE AND EASY USE OF YOUR HIGH LIFT TRUCK,
READ THESE INSTRUCTIONS ENTIRELY BEFORE USING.

9. HYDRAULIC & CURCUIT DIAGRAMS

9.5 Hydraulic Flow Diagram (*Models Manufactured Between 2010 & 2015*)



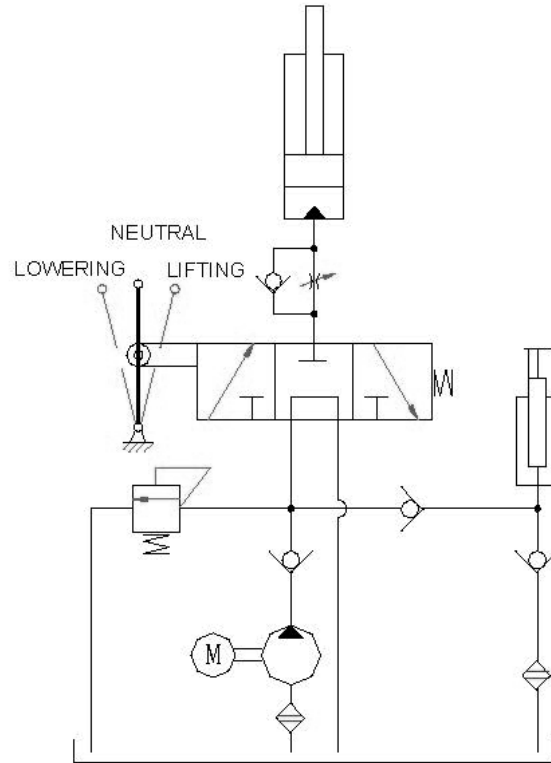
9.6 Circuit Diagram (*Models Manufactured Between 2010 & 2015*)



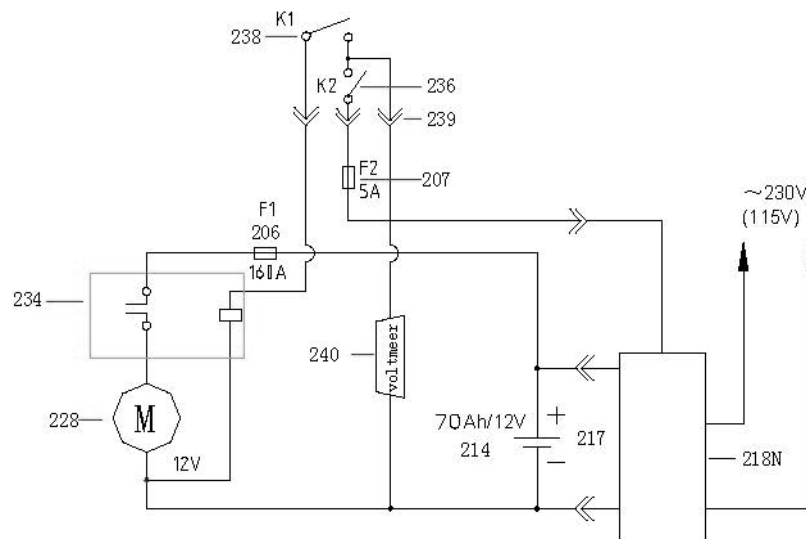
ATTENTION: TO INSURE SAFE AND EASY USE OF YOUR HIGH LIFT TRUCK,
READ THESE INSTRUCTIONS ENTIRELY BEFORE USING.

9. HYDRAULIC & CURCUIT DIAGRAMS (CONTINUED)

9.3 Hydraulic Flow Diagram (*Models Manufactured After 2015*)



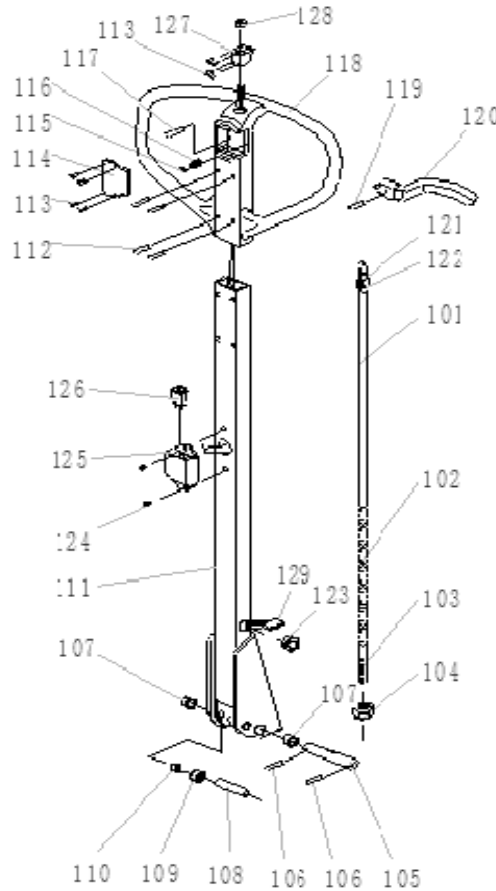
9.4 Circuit Diagram (*Models Manufactured After 2015*)



ATTENTION: TO INSURE SAFE AND EASY USE OF YOUR HIGH LIFT TRUCK,
READ THESE INSTRUCTIONS ENTIRELY BEFORE USING.

10. PART INFORMATION (MODELS MANUFACTURED BEFORE 2010)

10.1 HANDLE PART DIAGRAM



10.2 HANDLE PART LIST

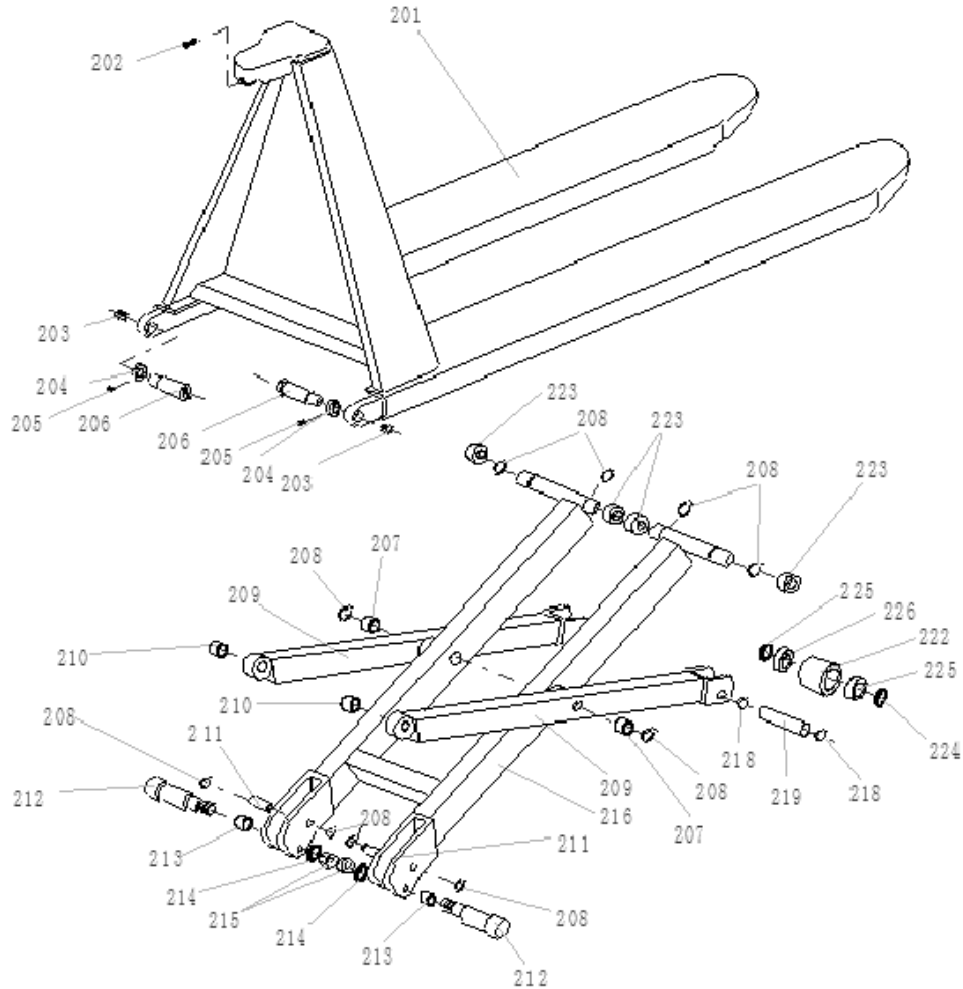
Wesco Replacement Part #	No.	Description	Qty
	101	Release Rod	1
	102	Chain	1
	103	Adjusting Bolt	1
	104	Adjusting Nut	1
	105	Axle with Hole	1
	106	Elastic Pin	2
	107	Bushing	2
	108	Roller Pin	1
	109	Pressure Roller	1
	110	Bushing	1
	111	Draw - bar	1
	112	Pin	4
	113	Screw	4
	114	Cover	1
	115	Ball	1

Wesco Replacement Part #	No.	Description	Qty
	116	Spring	1
	117	Pin	1
	118	Handle	1
	119	Pin	1
	120	Controlling Handle	1
	121	Pull Board	1
	122	Pin	1
	123	Rubber Band	1
	124	Screw	2
	125	Socket of Switch	1
272474	126	Switch	1
	127	Socket of Button	1
	128	Button	1
	129	Connector Plug	1
273057	101-129	Handle Assembly	1

ATTENTION: TO INSURE SAFE AND EASY USE OF YOUR HIGH LIFT TRUCK,
READ THESE INSTRUCTIONS ENTIRELY BEFORE USING.

10. PART INFORMATION (MODELS MANUFACTURED BEFORE 2010)

10.3 FRAME PART DIAGRAM



10.4 FRAME PART LIST

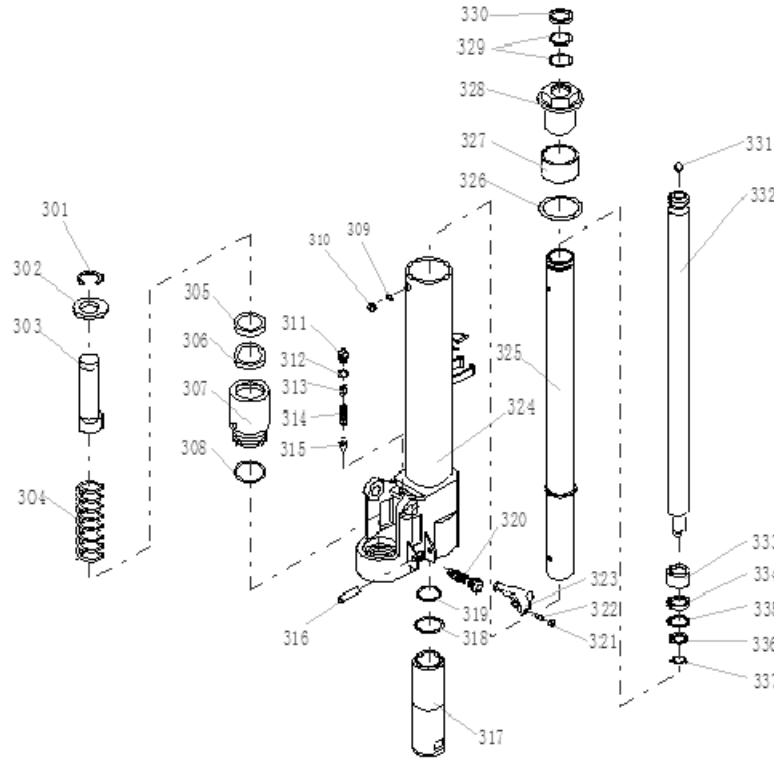
Wesco Replacement Part #	No.	Description	Qty
	201	Fork Frame	1
	202	Bolt	1
	203	Screw	2
	204	Gasket	2
	205	Screw	2
	206	Pin	2
	207	Bushing	2
	208	Elastic collar	10
	209	Left Leg	2
	210	Bushing	2
	211	Pin	2
	212	Centrifugal Axle	2
	213	Bushing	2

Wesco Replacement Part #	No.	Description	Qty
	214	Elastomeric Gasket	
	215	Nut	2
	216	Inner Leg	1
	217		
	218	Elastic collar	4
	219	Shaft of Roller	2
	220		
	221		
	222	Roller	2
	223	Steel Roller	4
	224	Gasket	4
	225	Bearing	4

ATTENTION: TO INSURE SAFE AND EASY USE OF YOUR HIGH LIFT TRUCK,
READ THESE INSTRUCTIONS ENTIRELY BEFORE USING.

10. PART INFORMATION (MODELS MANUFACTURED BEFORE 2010)

10.5 PUMP PART DIAGRAM



10.6 PUMP PART LIST

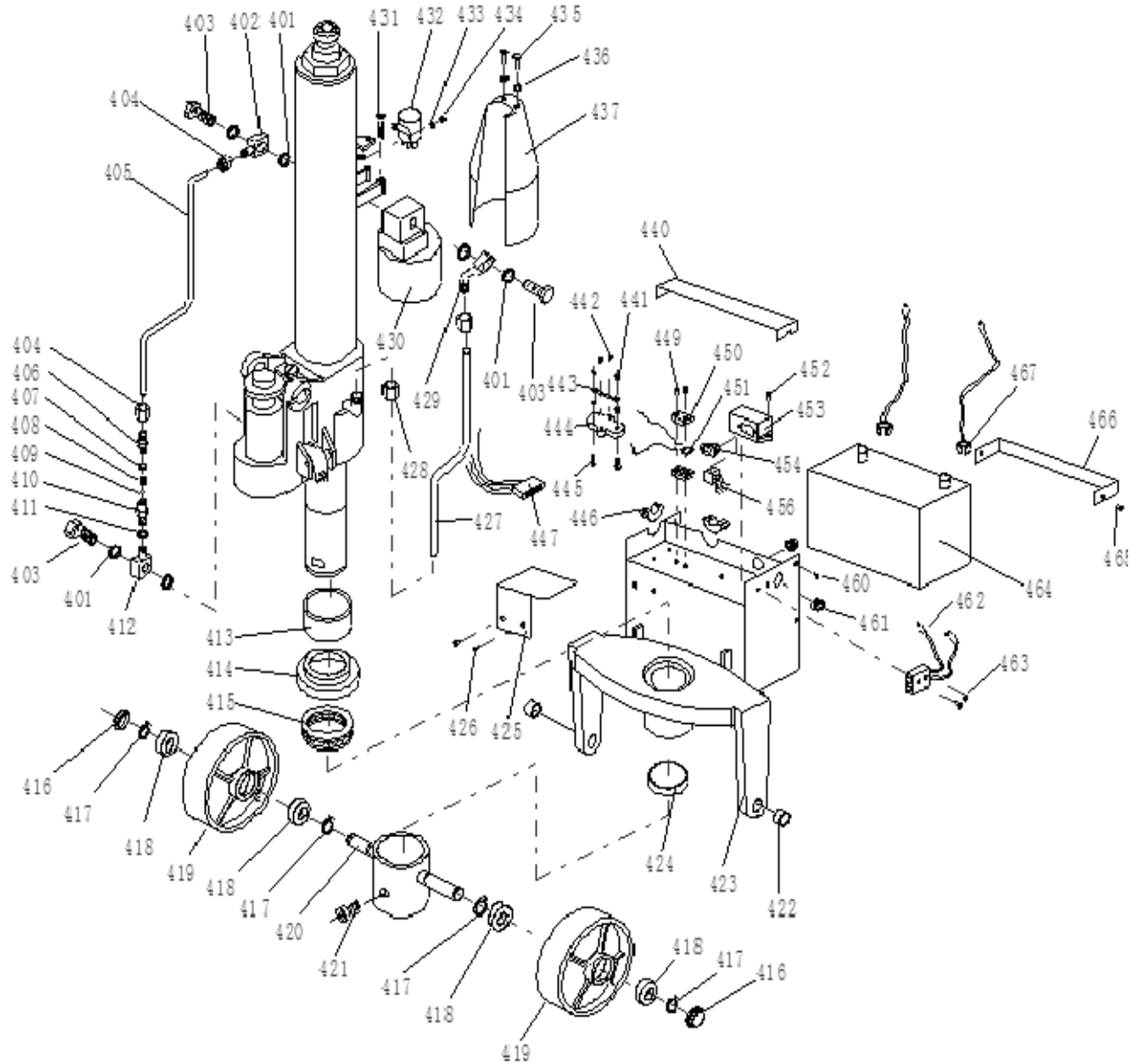
Wesco Replacement Part #	No.	Description	Qty
	301	Locking Ring	1
	302	Gasket for Spring	1
	303	Piston	1
	304	Spring	1
	305	Dust Ring	1
	306	Y - Ring	1
	307	Pump Cylinder	1
	308	O - Ring	1
	309	Seal Gasket	1
	310	Screw Plug	1
	311	Screw Plug	1
	312	O - Ring	1
	313	Adjusting Bolt	1
	314	Spring	1
	315	Spindle of Safety Valve	1
	316	Elastic Pin	1
	317	Lower Cylinder	1
	318	O - Ring	1
	319	O - Ring	1

Wesco Replacement Part #	No.	Description	Qty
	320	Valve Cartridge	1
	321	Nut	1
	322	Screw	1
	323	Lever Plate	1
	324	Pump Body	1
	325	Cylinder	1
	326	Seal Gasket	1
	327	Bushing	1
	328	Screw Cover	1
	329	O - Ring	1
	330	Dust Ring	1
	331	Steel Ball	1
	332	Piston Rod	1
	333	Piston	1
	334	Cup Packing	1
	335	O - Ring	1
	336	Gasket	1
	337	Elastic collar	1
272471		Complete Replacement Pump	1

ATTENTION: TO INSURE SAFE AND EASY USE OF YOUR HIGH LIFT TRUCK,
READ THESE INSTRUCTIONS ENTIRELY BEFORE USING.

10. PART INFORMATION (MODELS MANUFACTURED BEFORE 2010)

10.7 STEER WHEEL ASSEMBLY DIAGRAM



ATTENTION: TO INSURE SAFE AND EASY USE OF YOUR HIGH LIFT TRUCK,
READ THESE INSTRUCTIONS ENTIRELY BEFORE USING.

10. PART INFORMATION (MODELS MANUFACTURED BEFORE 2010)

10.8 STEER WHEEL ASSEMBLY PART LIST

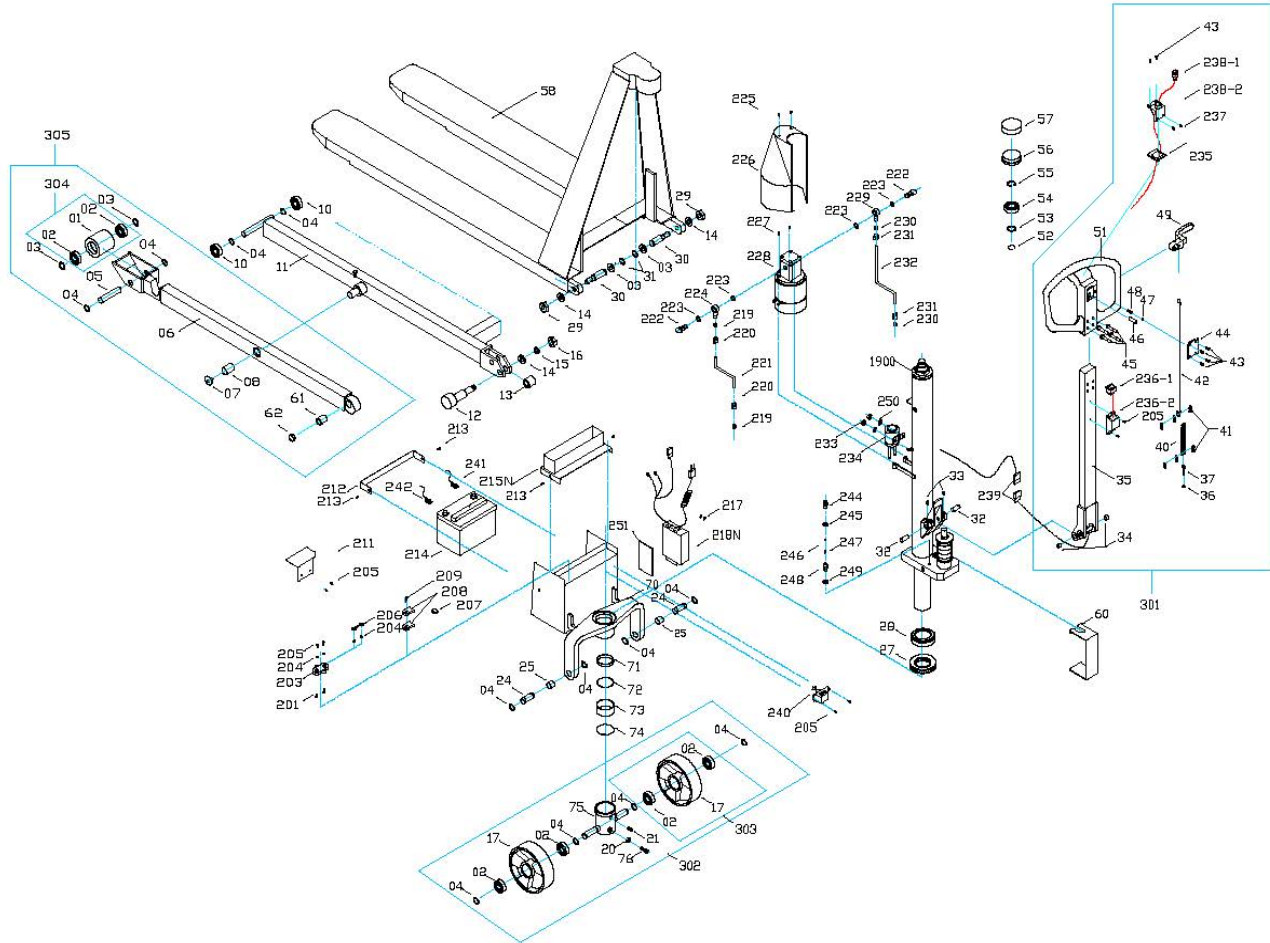
Wesco Replacement Part #	No.	Description	Qty
	401	Seal Gasket	6
	402	Connector	1
	403	Bolt	3
	404	Nut	2
	405	Oil Pipe	1
	406	Carve Tie-in	1
	407	Seal Gasket	1
	408	Spring	1
	409	Steel Ball	1
	410	Seat of Valve	1
	411	Seal Gasket	1
	412	Connector	1
272500	413	Bushing	1
	414	Seat of Bearing	1
	415	Bearing	1
272497	416	Dust Cover	2
272498	417	Elastic collar	4
272499	418	Bearing	4
	419	Wheel	4
	420	Holding Site for Wheel	1
	421	Bolt	1
	422	Bushing	2
	423	Thrust Plate	1
	424	Bushing	1
	425	Cover	1
	426	Screw	2
	427	Oil Pipe	1
	428	Nut	2
	429	Connector	1
	430	Motor Assembly	1
	431	Bolt	2
	432	Electromagnetic Switch	1
	433	Gasket	2
	434	Nut	2

Wesco Replacement Part #	No.	Description	Qty
	435	Screw	2
	436	Gasket	2
	437	Motor Cover	1
	438		
	439		
	440	Battery Cover	1
	441	Nut	4
	442	Screw	2
	443	Fuse	1
	444	Fuse Carrier	1
	445	Bolt	2
	446	Rubber band	2
	447	Connector plug	1
	448		
	449	Screw	2
	450	Fuse Carrier	2
	451	Fuse	1
	452	Screw	2
	453	Seat of Voltage Meter	1
	454	Voltage Meter	1
	455		
	456	Circuit Module	1
	457		
	458		
	459		
	460	Screw	2
	461	Rubber band	2
	462	Socket	1
	463	Screw	2
109102	464	Battery	1
	465	Screw	2
	466	Baffle	1
	467	Battery Wires	2
272472		Charger	1

ATTENTION: TO INSURE SAFE AND EASY USE OF YOUR HIGH LIFT TRUCK,
READ THESE INSTRUCTIONS ENTIRELY BEFORE USING.

11. PART INFORMATION (MODELS MANUFACTURED BETWEEN 2010 & 2015)

11.1 FRAME & HANDLE PART LIST



11.2 FRAME & HANDLE PART LIST

Wesco Replacement Part #	No.	Description	Qty
273728	01	Front Wheel	2
272489	02	Ball Bearing	8
	03	Washer	6
	04	Snap Ring	16
	05	Pin	2
	06	Leg	2
273658	07	Screw	2
	08	Bush	2
	10	Ball Bearing	4
	11	Leg	1
	12	Centrifugal Axle	2
	13	Bush	2
	14	Washer	4
	15	Bush	2
	16	Nut	2

Wesco Replacement Part #	No.	Description	Qty
	70	Hold Yoke	1
	71	Bush	1
	72	Snap Ring	1
	73	Ball Bearing	1
	74	Ball	42
	75	Wheel Yoke	1
	76	Screw	1
	201	Screw	2
	203	Fuse Box	1
	204	Nut	4
	205	Screw	9
	206	Fuse (160A)	1
	207	Fuse (5A)	1
	208	Fuse Box	2
	209	Screw	4

ATTENTION: TO INSURE SAFE AND EASY USE OF YOUR HIGH LIFT TRUCK,
READ THESE INSTRUCTIONS ENTIRELY BEFORE USING.

11. PART INFORMATION *(MODELS MANUFACTURED BETWEEN 2010 & 2015)*

11.2 FRAME & HANDLE PART LIST (CONTINUED)

Wesco Replacement Part #	No.	Description	Qty
272488	17	Steering Wheel	2
	19	Screw	2
	20	Nut	1
	21	Screw	1
	24	Pin	2
	25	Bush	2
	27	Ball Bearing	1
	28	Spacer	1
	29	Nut	2
	30	Pin	2
	31	Snap Ring	2
	32	Pin	2
	33	Screw	2
	34	Bush	2
	35	Handle Tube	1
	36	Nut	3
	37	Eye Bolt	1
	40	Chain	1
	41	Chain Connector	2
	42	Release Rod	1
	43	Screw	6
	44	Cover	1
	45	Pin	6
	46	Pin	1
	47	Ball	1
	48	Spring	1
	49	Release Lever	1
	51	Handle	1
	52	Retaining Ring	1
	53	Washer	1
	54	Ball Bearing	1
	55	Snap Ring	1
	56	Spacer	1
	57	Spacer	1
	58	Fork	1
	60	Hooking Plate	1
	61	Spacer	2
	62	Spacer	2

Wesco Replacement Part #	No.	Description	Qty
	211	Cover	1
	212	Plate	1
	213	Screw	4
	214	Battery	1
	215N	Cover	1
	217	Screw	1
272599	218N	Recharger	1
	219	Spacer	2
	220	Nut	2
	221	Oil Pipe	1
	222	Screw	2
	223	Washer	4
	224	Adjusting Screw	1
	225	Screw	2
	226	Cover	1
	227	Screw	2
272479	228	Pump	1
	229	Adjusting Screw	1
273655	230	Spacer	2
273656	231	Nut	2
273657	232	Oil Pipe	1
273731	234	Relay	1
	235	Washer	1
	236-1	Switch	1
	236-2	Switch Base	1
	237	Screw	2
	238-1	Up Switch	1
	238-2	Up Switch Base	1
	239	Socket	1
	240	Voltage Meter	1
	241	Battery Terminal (-)	1
	242	Batter Terminal (+)	1
	244	Adjusting Screw	1
	245	Washer	1
	246	Ball	1
	247	Spring	1
	248	Adjusting Screw	1
	249	Washer	1
	251	Plate	1

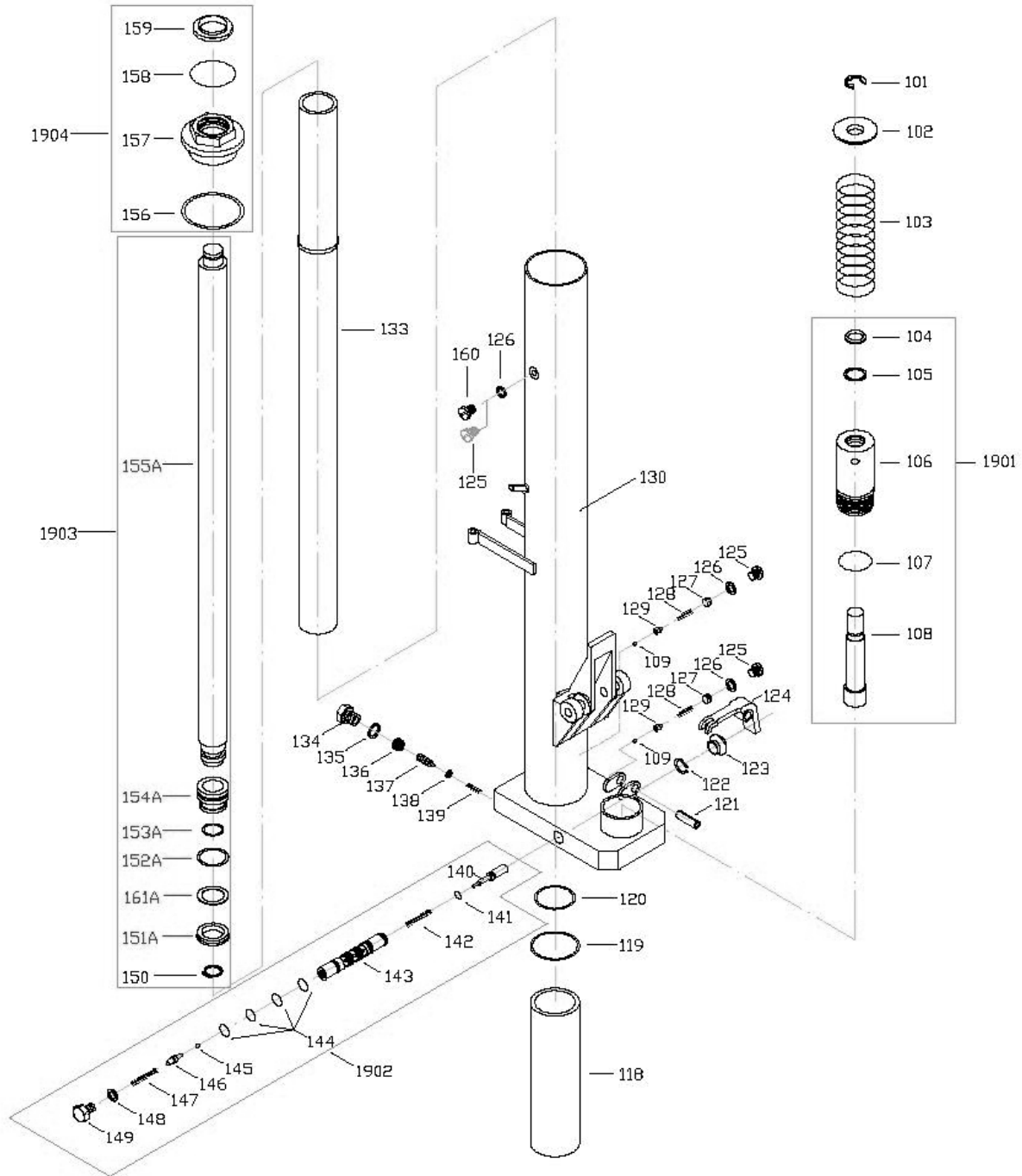
Replacement Assemblies

273661	301	Handle Assembly (Includes Items #34, 35, 36, 37, 40, 41, 42, 43, 44, 45, 46, 47, 48, 49, 51, 236-1, 236-2, 205, 235, 237, 238-1 & 238-2)	1
	302	Wheel Yoke Assembly (Includes Items # 02, 04, 17, 20, 75 & 76)	1
	303	Wheel Assembly (Includes Items #02 & 17)	2
	304	Front Wheel Assembly (Includes Items #01 & 02)	2
	305	Leg Assembly (Includes Items #01, 02, 03, 04, 05, 06, 07, 08, 61 & 62)	2

ATTENTION: TO INSURE SAFE AND EASY USE OF YOUR HIGH LIFT TRUCK,
READ THESE INSTRUCTIONS ENTIRELY BEFORE USING.

11. PART INFORMATION (MODELS MANUFACTURED BETWEEN 2010 & 2015)

11.3 PUMP PART DIAGRAM



ATTENTION: TO INSURE SAFE AND EASY USE OF YOUR HIGH LIFT TRUCK,
 READ THESE INSTRUCTIONS ENTIRELY BEFORE USING.

11. PART INFORMATION (MODELS MANUFACTURED BETWEEN 2010 & 2015)

11.4 PUMP PART LIST

Wesco Replacement Part #	No.	Description	Qty
	101	Retaining Ring	1
	102	Spring Seat	1
	103	Spring	1
	104	Wiper	1
	105	Y-Ring	1
	106	Pump	1
	107	O-Ring	1
	108	Plunger	1
	109	Ball	2
	118	Cylinder Bush	1
	119	O-Ring	1
	120	O-Ring	1
	121	Snap Ring	1
	122	Split Ring	1
	123	Rubber Sleeve	1
	124	Pendulum Sleeve	1
	125	Screw	2
	126	O-Ring	3
	127	Screw	2
	128	Spring	2
	129	Ball Seat	2
	130	Pump Housing	1
	133	Cylinder	1
	134	Screw	1
	135	Seal Ring	1
	136	Screw	1

Wesco Replacement Part #	No.	Description	Qty
	137	Screw	1
	138	Plate	1
	139	Spring	1
	140	Release Indicator	1
	141	O-Ring	1
	142	Spring	1
	143	Valve Insert	1
	144	O-Ring	4
	145	Ball	1
	146	Release Valve	1
	147	Spring	1
	148	Seal Ring	1
	149	Screw	1
	150	Snap Ring	1
	151A	Y-Ring	1
	152A	O-Ring	1
	153A	O-Ring	1
	154A	Piston	1
	155A	Piston Rod	1
	156	Seal Ring	1
	157	Cylinder Nut	1
	158	O-Ring	1
	159	Scraper Ring	1
	160	Screw	1
	161A	Retaining Y-Ring	1

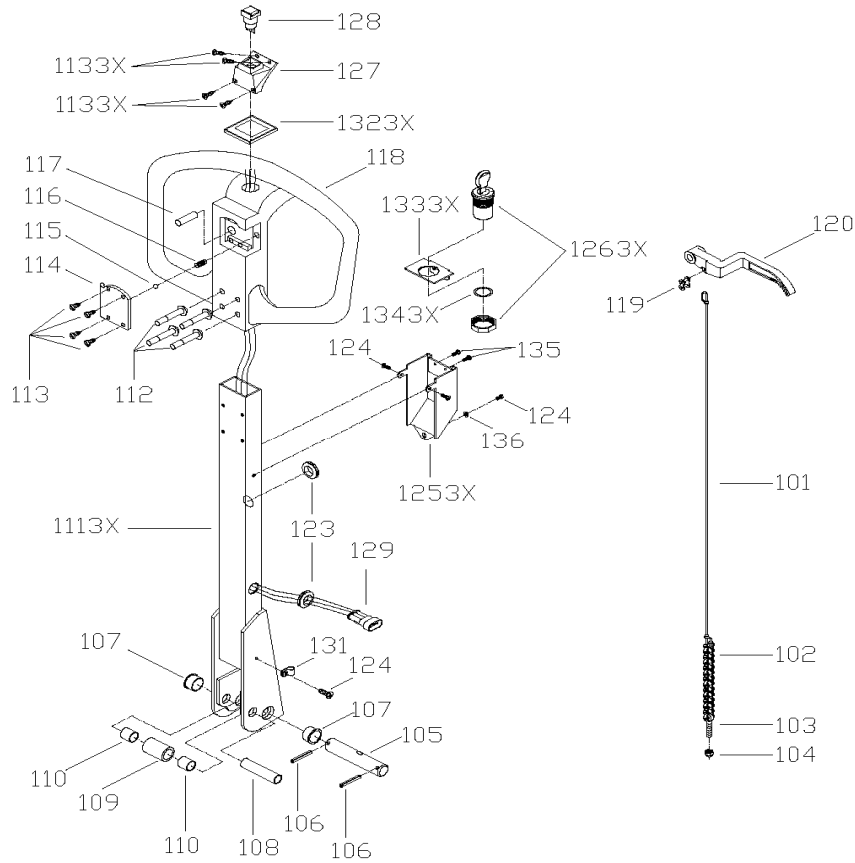
Replacement Assemblies

273706	1900	Complete Replacement Pump	1
	1901	Pump Assembly (Includes Items #104, 105, 106, 107 & 108)	1
	1902	Valve Insert Assembly (Includes Items #140, 141, 142, 143, 144, 145, 146, 147, 148 & 149)	1
	1903	Piston Rod Assembly (includes Items #150, 151A, 152A, 153A, 154A, 155A & 161A)	1
	1904	Cylinder Nut Assembly (Includes Items #156, 157, 158 & 159)	1

ATTENTION: TO INSURE SAFE AND EASY USE OF YOUR HIGH LIFT TRUCK,
READ THESE INSTRUCTIONS ENTIRELY BEFORE USING.

12. PART INFORMATION (MODELS MANUFACTURED AFTER 2015)

12.1 HANDLE PART DRAWING



12.2 HANDLE PART LIST

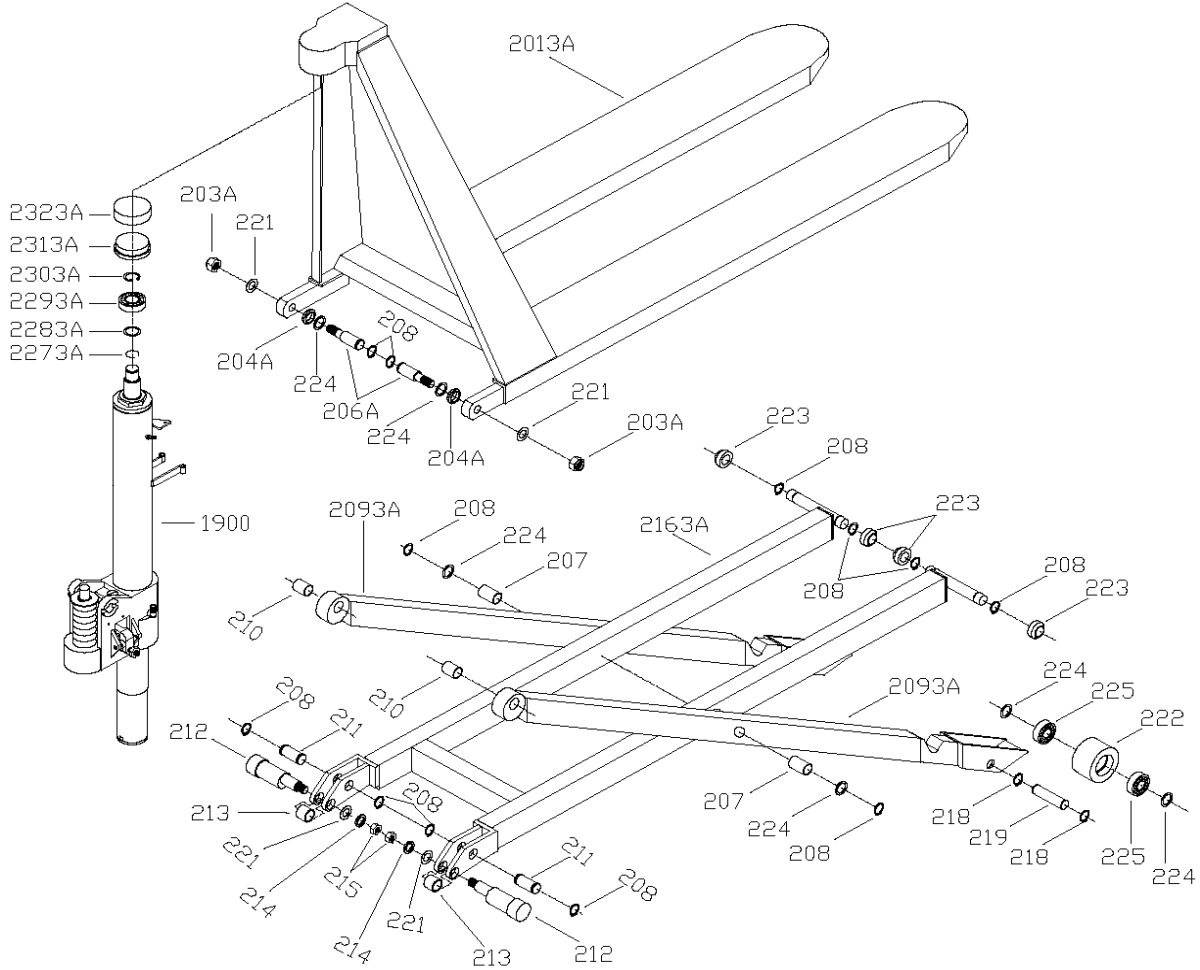
Wesco Part #	No.	Description	Qty
132106	101	Release Rod	1
132111	102	Chain	1
132112	103	Adjusting Bolt	1
132113	104	Adjusting Nut	1
	105	Axle with Hole	1
	106	Elastic Pin	2
	107	Bushing	2
	108	Roller Pin	1
	109	Pressure Roller	2
	110	Bushing	1
	1113x	Draw - bar	1
132114	112	Pin	4
132115	113	Screw	4
	1133X	Screw	4
132116	114	Cover	1
132107	115	Ball	1
132117	116	Spring	1

Wesco Part #	No.	Description	Qty
132118	117	Pin	1
132119	118	Handle	1
132105	119	Pin	1
132120	120	Controlling Handle	1
	123	Rubber Band	2
	124	Screw	4
132100	1253X	Cover	1
132070	1263X	Switch	4
	127	Socket of Button	1
132101	128	Button	1
132079	129	Connector Plug	1
	131	Nylon Clips	1
	1323X	Rubber Packing	1
	1333X	Socket of Switch	1
	1343X	O - Ring	1
	135	Screw	2
	136	Gasket	1

ATTENTION: TO INSURE SAFE AND EASY USE OF YOUR HIGH LIFT TRUCK,
READ THESE INSTRUCTIONS ENTIRELY BEFORE USING.

12. PART INFORMATION (MODELS MANUFACTURED AFTER 2015)

12.3 FRAME PART DRAWING



12.4 FRAME PART LIST

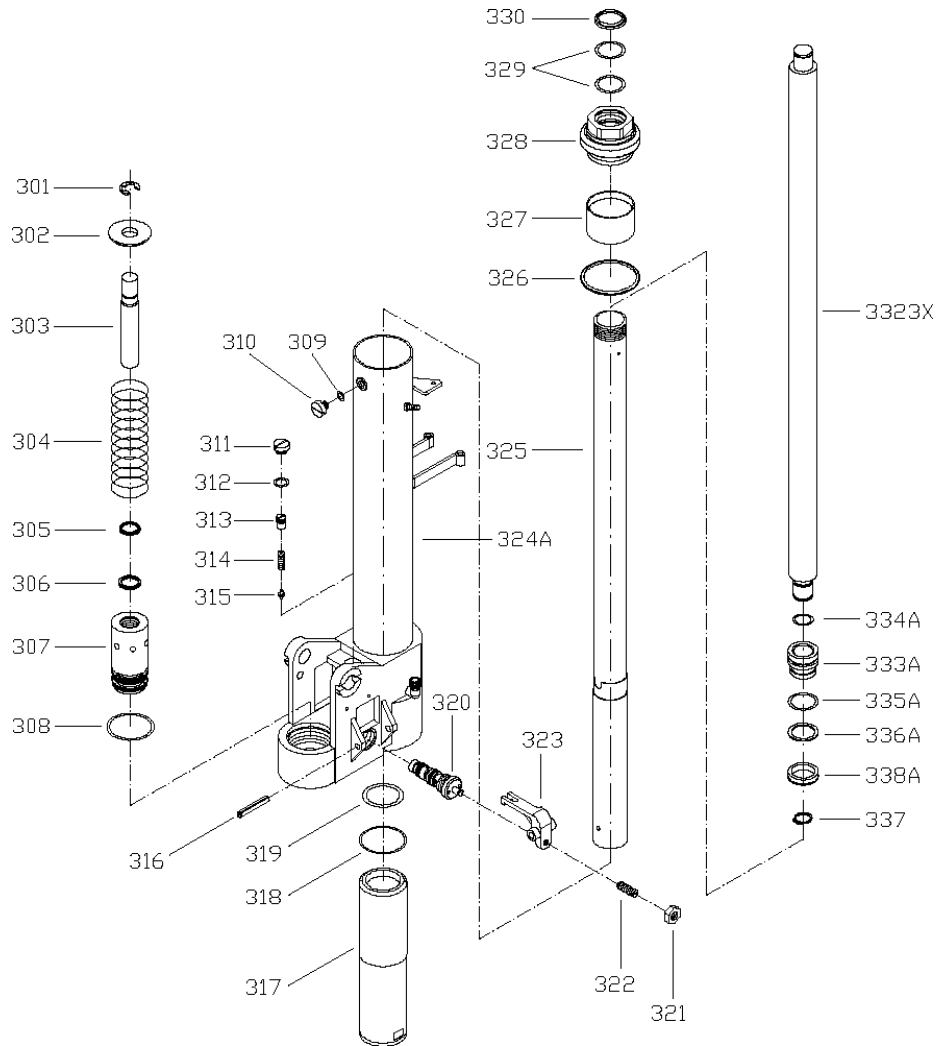
Wesco Replacement Part #	No.	Description	Qty
132108	2013A	Fork Frame	1
	203A	Locknut	2
	204A	Gasket	2
	206A	Pin	2
	207	Bushing	2
132103	208	Elastic Collar	12
132110	2093A	Lift Leg	2
	210	Bushing	2
132102	211	Pin	2
	212	Centrifugal Axle	2
	213	Bushing	2
	214	Elastomeric Gasket	2
	215	Nut	2
132109	2163A	Inner Leg	1

Wesco Replacement Part #	No.	Description	Qty
132071	218	Elastic Collar	4
132072	219	Shaft of Roller	2
	221	Gasket	4
132073	222	Roller	2
	223	Steel Roller	4
132074	224	Gasket	8
132075	225	Bearing	4
	2273A	Steel Cable Baffle Ring	1
	2283A	Washer	1
	2293A	Ball Bearing	1
	2303A	Circlip for Shaft	1
	2313A	Seat of Bearing	1
	2323A	Rubber Cover	1
132077	1900	Pump Unit	1

ATTENTION: TO INSURE SAFE AND EASY USE OF YOUR HIGH LIFT TRUCK,
READ THESE INSTRUCTIONS ENTIRELY BEFORE USING.

12. PART INFORMATION (MODELS MANUFACTURED AFTER 2015)

12.5 PUMP PART DRAWING



ATTENTION: TO INSURE SAFE AND EASY USE OF YOUR HIGH LIFT TRUCK,
READ THESE INSTRUCTIONS ENTIRELY BEFORE USING.

12. PART INFORMATION (MODELS MANUFACTURED AFTER 2015)

12.6 PUMP PART LIST

Wesco Replacement Part #	No.	Description	Qty
	301	Locking Ring	1
	302	Gasket for Spring	1
	303	Piston	1
	304	Spring	1
*	305	Dust Ring	1
*	306	Y-Ring	1
	307	Pump Cylinder	1
*	308	O-Ring	1
*	309	Seal Gasket	1
	310	Screw Plug	1
	311	Screw Plug	1
*	312	O-Ring	1
	313	Adjusting Bolt	1
	314	Spring	1
	315	Spindle Safety Valve	1
	316	Elastic Pin	1
	317	Lower Cylinder	1
*	318	O-Ring	1
*	319	O-Ring	1

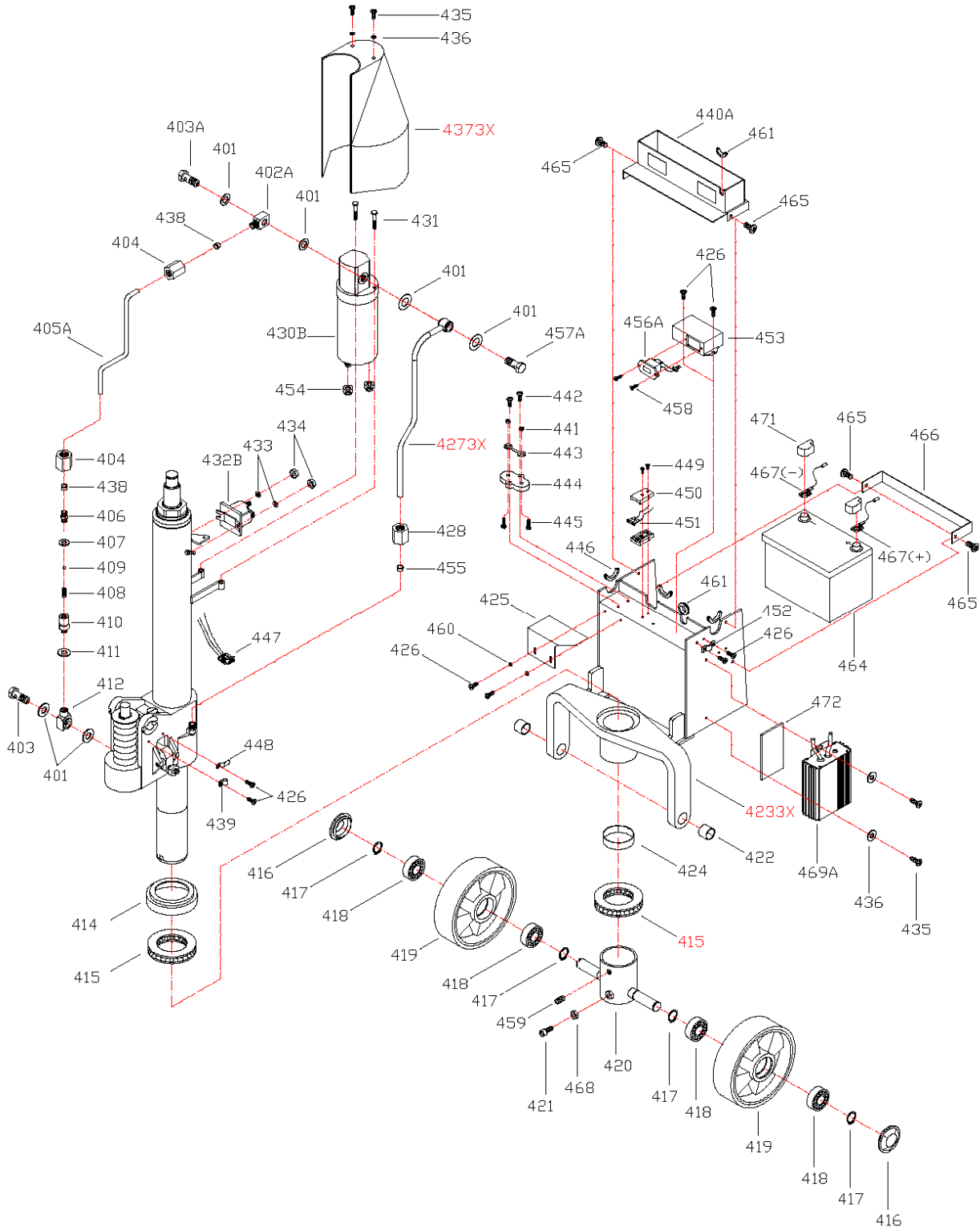
Wesco Replacement Part #	No.	Description	Qty
132068	320	Valve Cartridge	1
	321	Nut	1
	322	Screw	1
	323	Lever Plate	1
	324A	Pump Body	1
	325	Cylinder	1
*	326	Seal Gasket	1
	327	Bushing	1
	328	Screw Cover	1
*	329	O-Ring	1
*	330	Dust Ring	1
	3323X	Piston Rod	1
	333A	Piston	1
*	334A	O-Ring	1
*	335A	O-Ring	1
*	336A	Gasket	1
	337	Elastic Collar	1
*	338A	Y-Ring	1
132078		Seal Kit	1

* Items included in Seal Kit P/N 132078

ATTENTION: TO INSURE SAFE AND EASY USE OF YOUR HIGH LIFT TRUCK,
READ THESE INSTRUCTIONS ENTIRELY BEFORE USING.

12. PART INFORMATION (MODELS MANUFACTURED AFTER 2015))

12.7 EXTERNAL CHARGER PART DRAWING



ATTENTION: TO INSURE SAFE AND EASY USE OF YOUR HIGH LIFT TRUCK,
 READ THESE INSTRUCTIONS ENTIRELY BEFORE USING.

12. PART INFORMATION (MODELS MANUFACTURED AFTER 2015)

12.8 EXTERNAL CHARGER PART LIST

Wesco Replacement Part #	No.	Description	Qty
	401	Seal Gasket	6
	402A	Connector	1
	403A	Bolt	1
	403	Bolt	1
	404	Nut	2
	405A	Oil Pipe	1
	406	Carve Tie-In	1
	407	Seal Gasket	1
	408	Spring	1
	409	Steel Ball	1
	410	Seat of Valve	1
	411	Seal Gasket	1
	412	Connector	1
	414	Seat of Bearing	1
	415	Bearing	2
	416	Dust Cover	2
	417	Elastic Collar	4
	418	Bearing	4
	419	Wheel	2
	420	Holding Site for Wheel	1
	421	Bolt	1
132104	422	Bushing	2
	4233X	Thrust Plate	1
	424	Bushing	1
132081	425	Cover	1
132082	426	Screw	8
	4273X	Oil Pipe	1
	428	Nut	1
132085	430A	Motor Assembly	1
	431	Bolt	2
272502	432A	Electromagnetic Switch	1
	433	Gasket	2
	434	Nut	2
	435	Screw	6
	436	Gasket	6
	4373X	Motor Cover	1

Wesco Replacement Part #	No.	Description	Qty
	438	Sheath	2
	439	Nylon Clips	1
	4403X	Battery Cover	1
	441	Nut	2
	442	Screw	2
132084	443	Fuse	1
	444	Fuse Carrier	1
	445	Bolt	2
	446	Rubber Band	2
	447	Connector Plug	1
	448	Metal Sheet	1
	449	Screw	6
	450	Fuse Carrier	2
	451	Fuse	1
	452	Wire Clip	1
	453	Seat of Voltage Meter	1
	454	Rubber Sheath	2
	455	Sheath	1
132086	456A	Circuit Module	1
	457A	Bolt	1
	458	Screw	2
	459	Screw	3
	460	Gasket	2
	461	Rubber Band	2
	462	Socket	2
172196	464	Battery	1
132076	465	Screw	4
132083	466	Bracket	1
	467 (+)	Battery Clip (+)	1
	467 (-)	Battery Clip (-)	1
	468	Nut	1
271997	469A	Electronic Charger	1
	470	Pull Handle	1
	471	Battery Safeguard	2
	472	Heat Conduction Plate	1
132077	1900	Pump Unit	1
132069		Wiring Harness	1