



Eoslift

W16/20

Electric
Pallet
Truck

Spare Parts Manual

Eoslift

Eoslift Automation Technology Corp.
No.99 Yanjia Road, Yuanfeng Town, Halyan, Zhejiang Province, China 314317
Tel: +86 573 8622 9999 Fax: +86 573 8622 2900
Email: info@eoslift.com Website: www.eoslift.com
Hotline: 400-626-9090



Instruction:

1.This manual includes parts of W16 / 20 Series Electric Pallet Truck.

2.Searching Method

Finding the number of spare parts based on perspective assembly chart and find out relevant number according to the number of spare parts.The code and model of assembly chart will be distinguished in truck code.

3.When purchasing ,the model,serial number,spare part number and name and quantity should be written clearly.

4. Please use our spare parts when repairing and replacing parts to make sure quality.

5.To improve quality, our company will advance some parts, the modification will not be informed.If users want to know more,please contact our company.

Eoslift

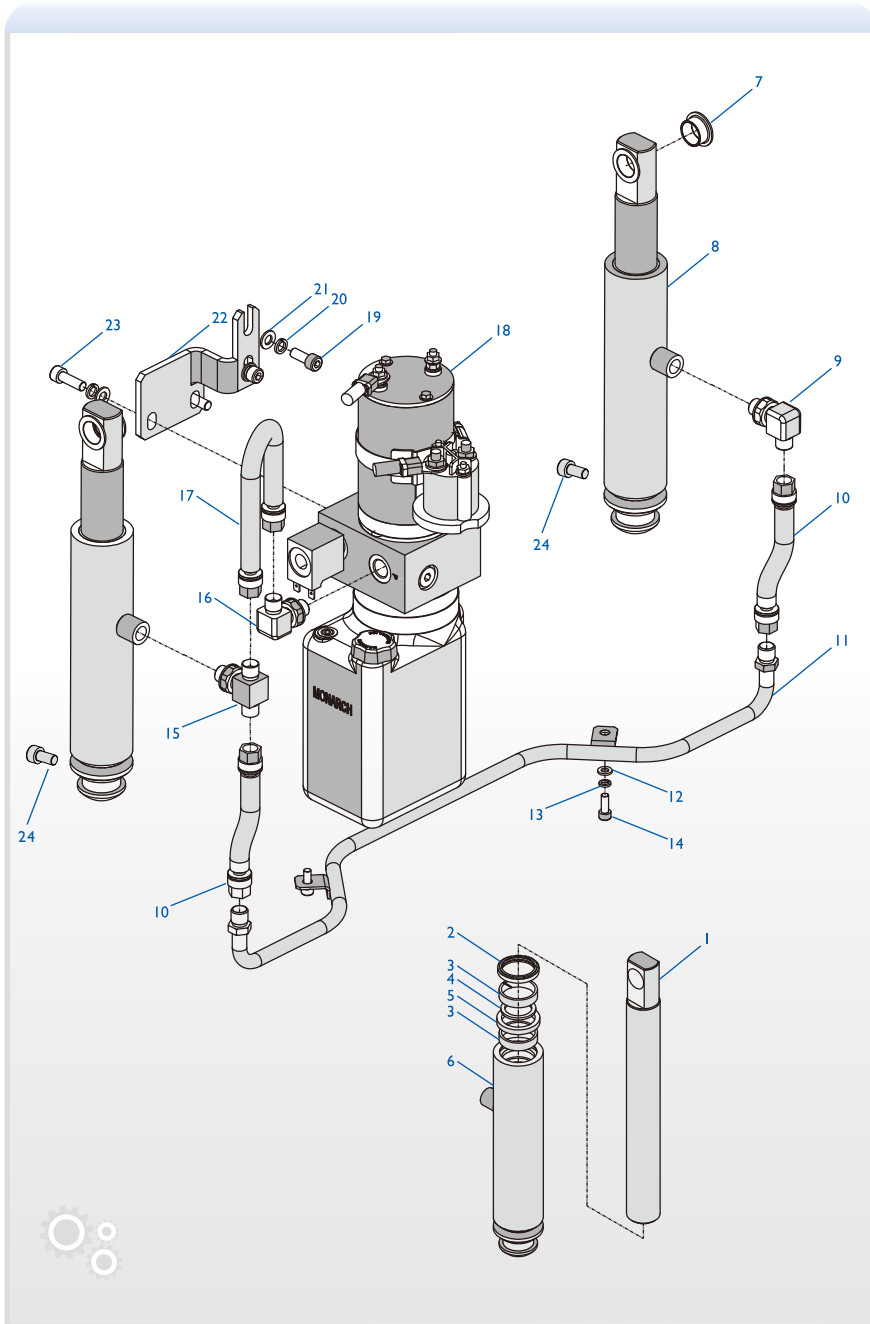


Hydraulic System

Contents

I . Hydraulic System	01
II . Steering System	03
III. Universal wheel assembly	05
IV. Electric Assembly	07
V . Frame Electric Installing	09
VI. Batteries and charger	11
VII. The covering plate and instrument	12
VIII. Driving Installing	14
IX. Forklift Mast Structure	15
X . Driving Assembly	17

1	WJ12200005	Piston rod	1
2	WJ12200004	Anti-dust washer	1
3	WJ12200002	Supporting ring	2
4	WJ12200033	O type washer	1
5	WD03000003	YX seal washer	1
6	WJ12200001	Cylinder body	1
7	WC97000040	Roller bearing	4
8	WC97000025	Cylinder assembly	2
9	WC97000023	Union elbow	1
10	WC97000020	Soft pipe1	2
11	WC97000305	Steel pipe weld	1
12	WE95000011	Plain washer	2
13	WE95000009	Spring washer	2
14	WE97000006	Hexagon socket cap screws	2
15	WC97000024	T-joint	1
16	WC97000022	Union elbow	1
17	WC97000021	Soft pipe2	1
18	WC97000019	Bump body	1
19	WE97000010	Union elbow	2
20	WE95000001	Spring washer	4
21	WE95000003	Plain washer	4
22	WC98000019	Bump body installing plate	1
23	WE97000011	Hexagon socket cap screws	2
24	WE99000002	Hexagon bolt	2

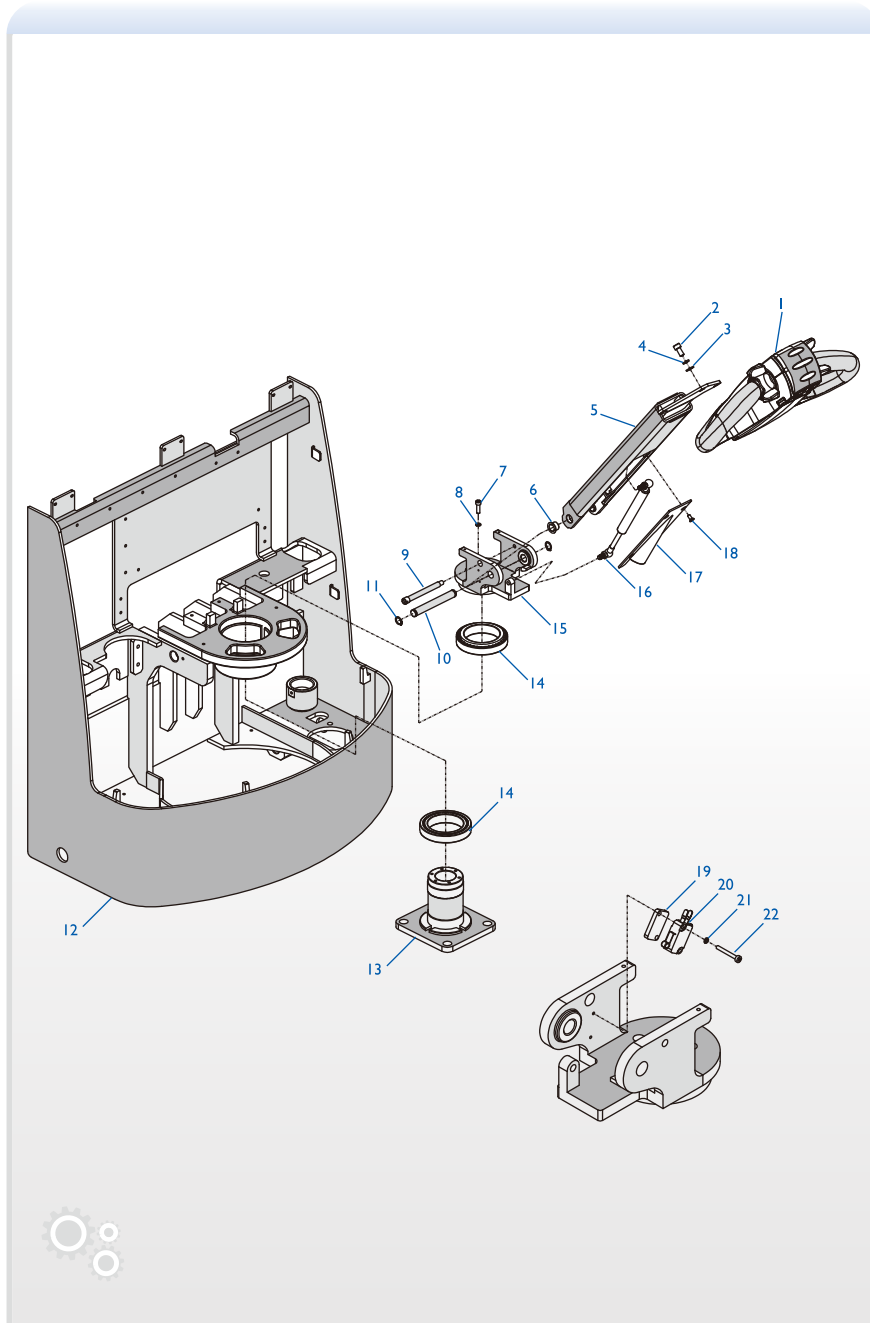


1	WC97000033	Handle	1
2	WE97000009	Hexagon socket cap screws	3
3	WE95000003	Plain washer	3
4	WE95000001	Spring washer	3
5	WC98000032	Operating rod weld	1
6	WC97000039	Roller	2
7	WE97000010	Hexagon socket cap screws	6
8	WE95000001	Spring washer	6
9	WC97000037	Operating rod shaft	1
10	WC97000036	Steering rod pin shaft	1
11	WE93000003	Circlip for shaft	2
12	WC98000006	Mast weld	1
13	WC98000021	Steering bracket	1
14	WC97000026	Tapered roller bearings	2
15	WC98000030	Steering base	1
16	WC97000038	Air spring	1
17	WC98000031	Operating rod back plate	1
18	WE97000001	Hexagon countersunk head cap screws	4
19	WC98000023	Inching switch washer	1
20	WC97000030	Inching switch	1
21	WE95000007	Spring washer	2
22	WE97000066	Hexagon socket cap screws	2

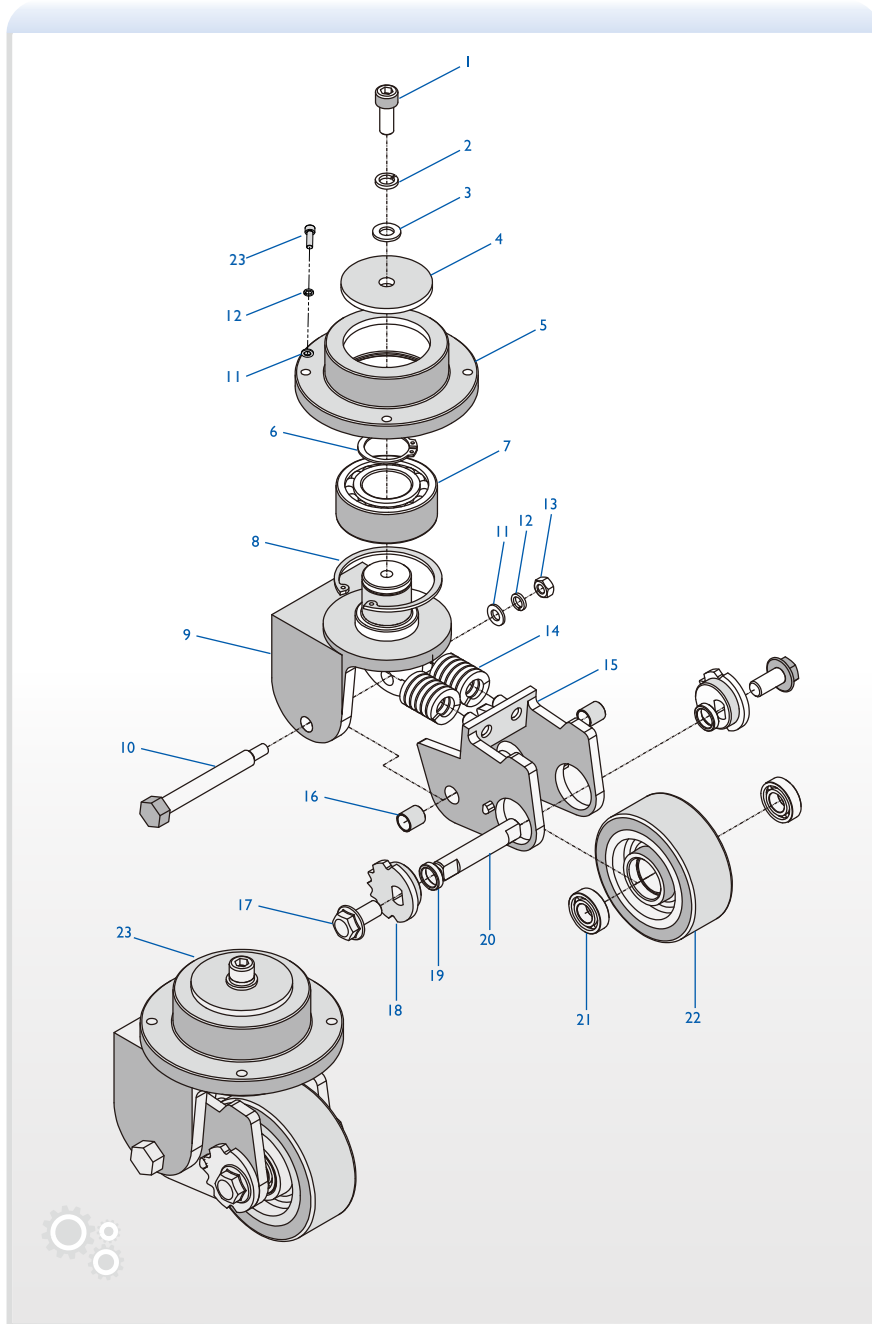
Steering system

Universal wheel assembly

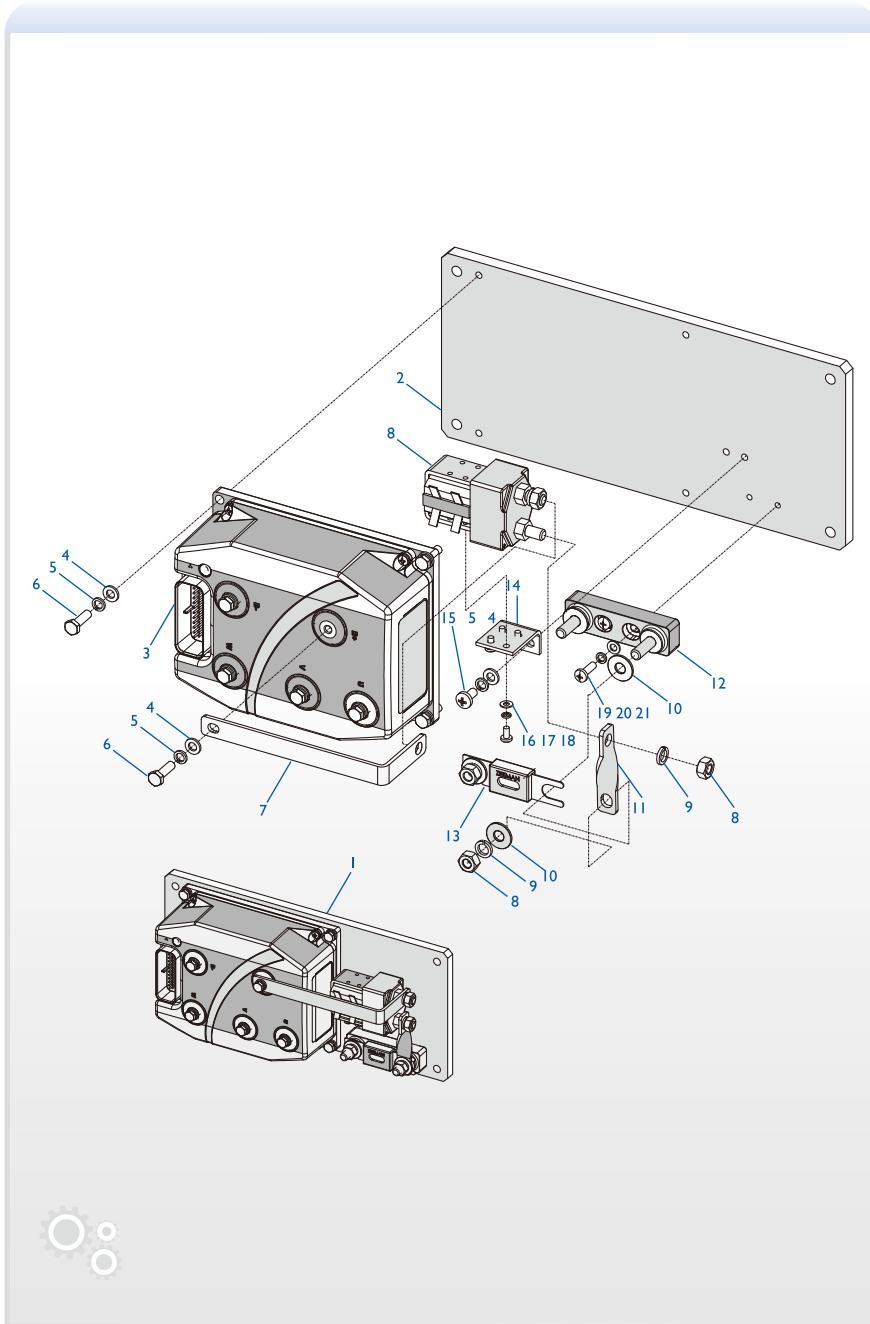
W16 / 20 Series Electric Pallet Truck



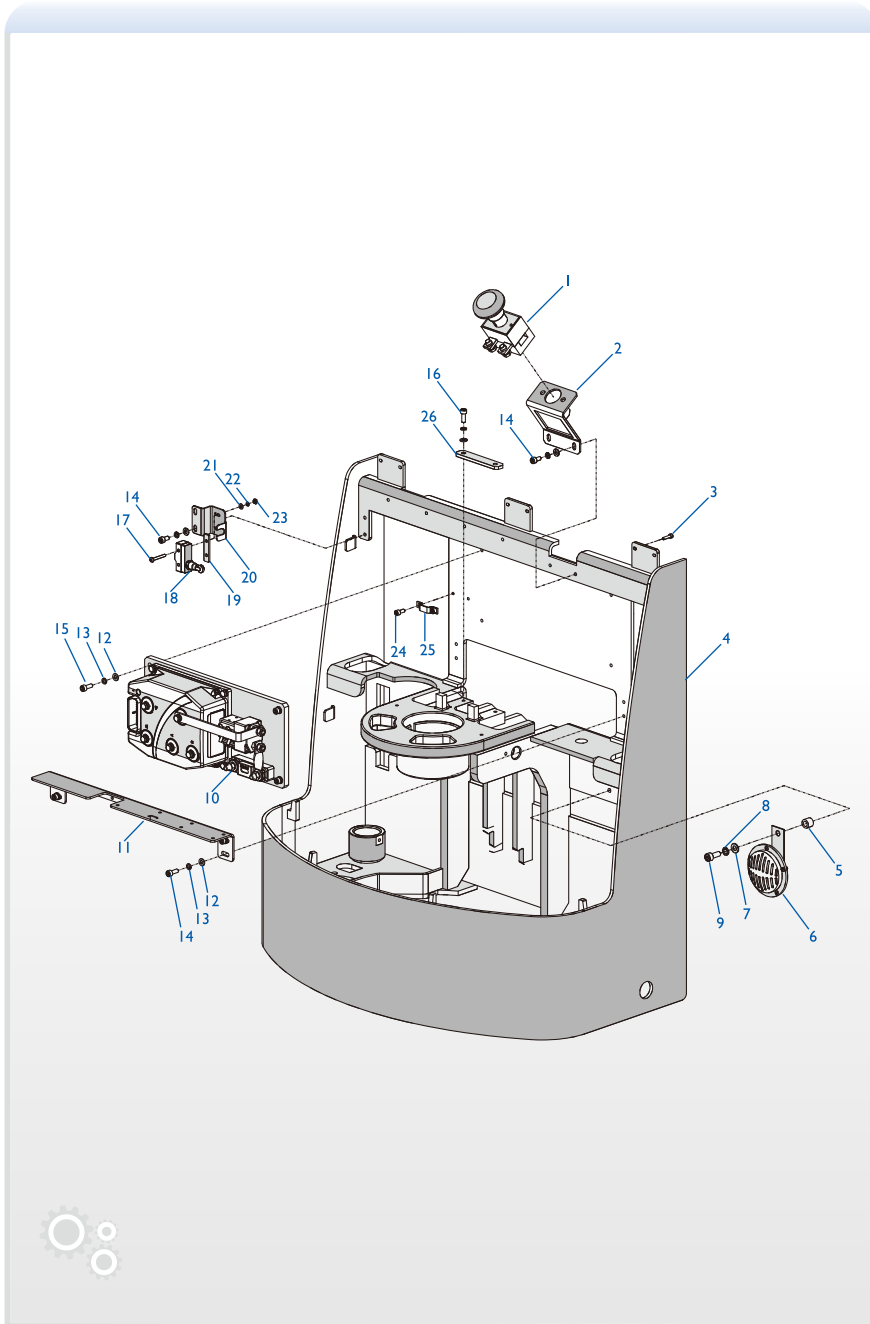
1	WE97000002	Hexagon socket cap screws	1
2	WE95000002	Spring washer	1
3	WE95000004	Plain washer	1
4	WC97000010	Anti-dust plate	1
5	WC97000009	Bearing base	1
6	WE93000002	Circlip for shaft	1
7	WC97000012	Double row angular contact bearing	1
8	WE93000001	Circlip for hole	1
9	WC98000007	Bracket weld	1
10	WC97000006	Bolt	1
11	WE95000003	Plain washer	5
12	WE95000001	Spring washer	5
13	WE96000001	Hexagon nut	1
14	WC97000015	Square spring	2
15	WC98000008	Wheel mast weld	1
16	WC97000014	Straight sleeve	2
17	WE99000001	Hexagon bolt with flange	2
18	WC97000007	Eccentric	2
19	WC97000008	Distance sleeve	2
20	WC97000005	Wheel shaft	1
21	WC97000013	Deep groove ball bearings	2
22	WC97000011	Auxiliary wheel	1
23	WE97000011	Hexagon socket cap screws	4



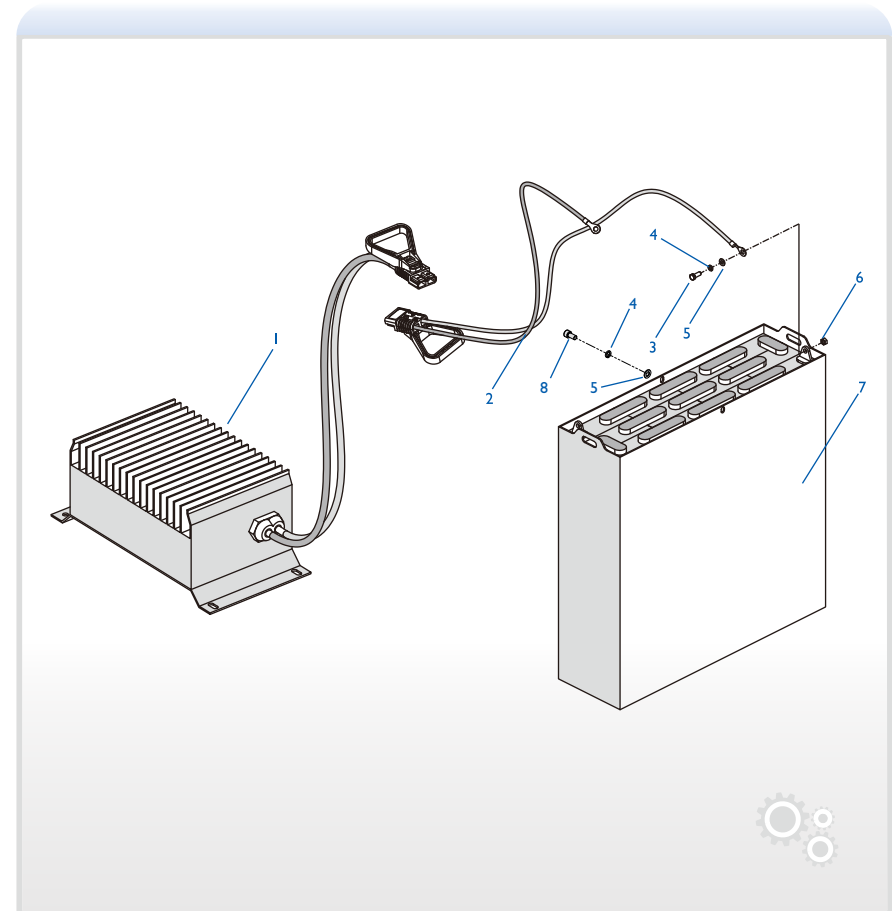
1	WC95000002	Electric assembly(W20)	1
	WC94000018	Electric assembly(W20)	1
2	WJ12100008	Aluminium plate	1
3	WJ12100001	Controller assembly	1
4	WE95000011	Plain washer	11
5	WE95000005	Spring washer	11
6	WE99000008	Hexagon bolt	9
7	WJ12100005	Copper bar II	1
8	WE96000001	Hexagon bolt	4
9	WE95000001	Spring washer	4
10	WE95000003	Plain washer	4
11	WJ12100003	Copper bar I	1
12	WJ12100007	Fuse protector base	1
13	WJ12100002	Fuse protector	1
14	WJ12100006	Contractor bracket	1
15	WE97000058	Cross head pan head screws	2
16	WE05000022	Plain washer	4
17	WE05000021	Spring washer	4
18	WE03000043	Cross head pan head screws	4
19	WE97000060	Cross head pan head screws	2
20	WE05000016	Spring washer	2
21	WE05000004	Plain washer	2



1	WC94000001	Emergency switch	1
2	WC98000029	The installing plate welded of emergency switch	1
3	WE97000004	Cross recess pan head screw	6
4	WC98000006	Frame welded	1
5	WC97000035	The installing plate of horn	1
6	WC97000032	horn	1
7	WE95000003	Plain washer	1
8	WE95000001	spring washer	1
9	WE97000011	Socket cap screw	1
10	WC95000002	Electronic assembly (W20)	1
	WC94000018	Electronic assembly (W16)	1
11	WC98000227	Richard line board	1
12	WE95000011	Plain washer	14
13	WE95000009	Spring washer	14
14	WE97000006	Socket cap screw	8
15	WE97000007	Socket cap screw	4
16	WE97000007	Socket cap screw	2
17	WE97000017	Cross recess pan head screw	2
18	WC97000031	Limitation switch II	1
19	WC98000025	The subplate of limitation switch II installing plate	1
20	WC98000024	The subplate of limitation switch II installing plate	1
21	WE95000010	Plain washer	2
22	WE95000008	Spring washer	2
23	WE96000002	Hexagon nut	2
24	WE97000005	Socket cap screw	2
25	WC98000026	Pipe Clamp	1
26	WC98000022	The subplate of cable	1

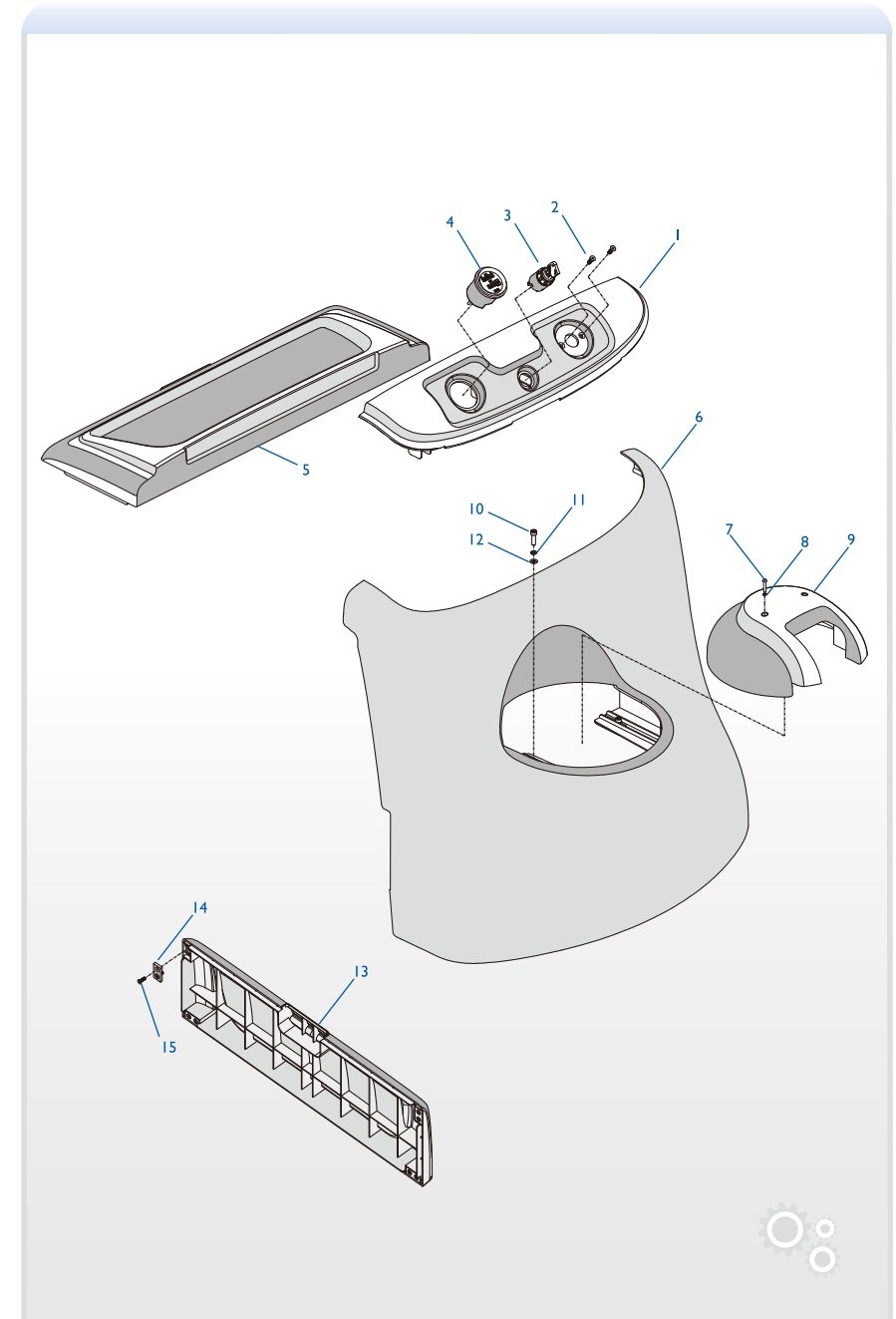


1	WC94000005	Charger(W20)	1
	WC94000003	Charger(W16)	1
2	WC95000074	Battery cable	1
3	WE99000003	Hexagon bolt	2
4	WE95000001	Spring washer	3
5	WE95000003	Plain washer	3
6	WE96000001	Hexagon nut	2
7	WC94000004	Batteries set(w20)	1
	WC94000017	Batteries set(w16)	1
8	WE97000009	Hexagon socket head cap screws	1



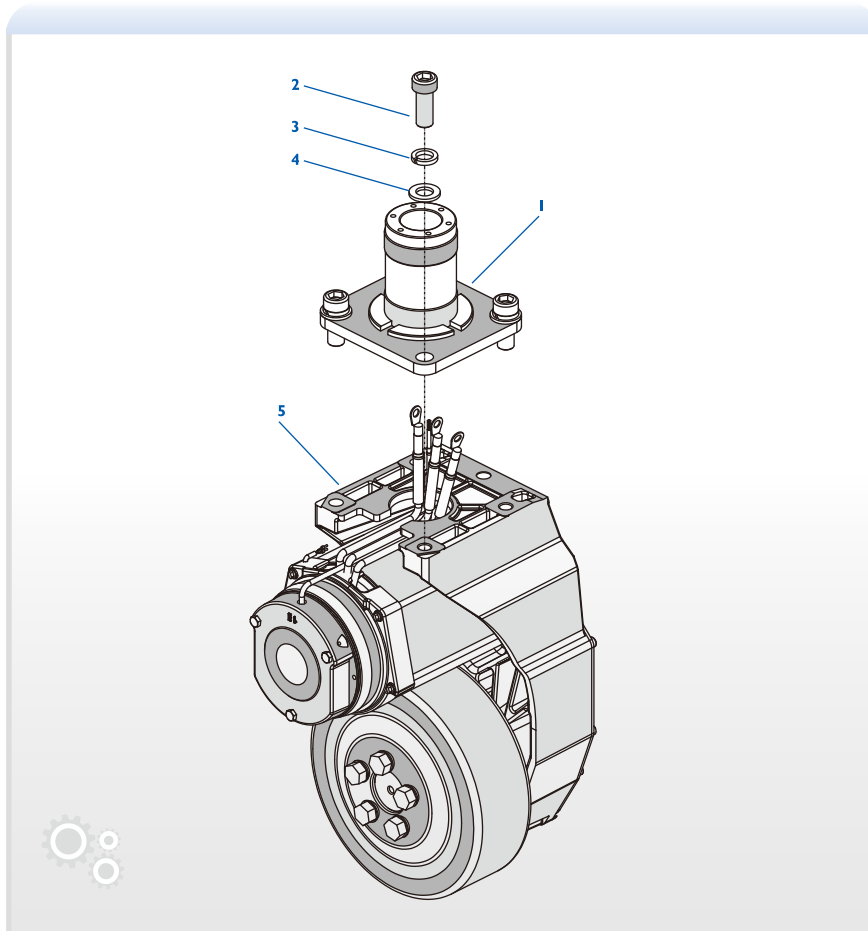
The covering plate and instrument

1	WC97000381	Instrument panel	1
2	WE97000013	Hexagon socket countersunk head screws	2
3	WC97000029	Key switch	1
4	WC97000028	Instrument	1
5		The assembly of battery covering plate (W20)	1
		The assembly of battery covering plate (W16)	1
6	WC97000293	The covering plate of the truck	1
7	WE97000012	Hexagon socket button head screws	2
8	WE95000008	Spring washer.	2
9	WC97000380	The plate of steering system	1
10	WE97000008	Hexagon socket cap screws	2
11	WE95000009	Spring washer	2
12	WE95000011	Plain washer	2
13	WC98000003	The covering plate of battery (W20)	1
	WC97000383	The covering plate of battery (W16)	1
14	WC97000001	Magnet	4
15	WE97000001	Hexagon socket countersunk head screws	8



Driving Installing

1	WC98000021	Turing bracket	1
2	WE97000003	Socket cap screw	4
3	WE95000005	Spring washer	4
4	WE95000006	Plain washer	4
5	WC97000027	Driving system assembly (W20)	1
	WC97000043	Driving system assembly (W16)	1



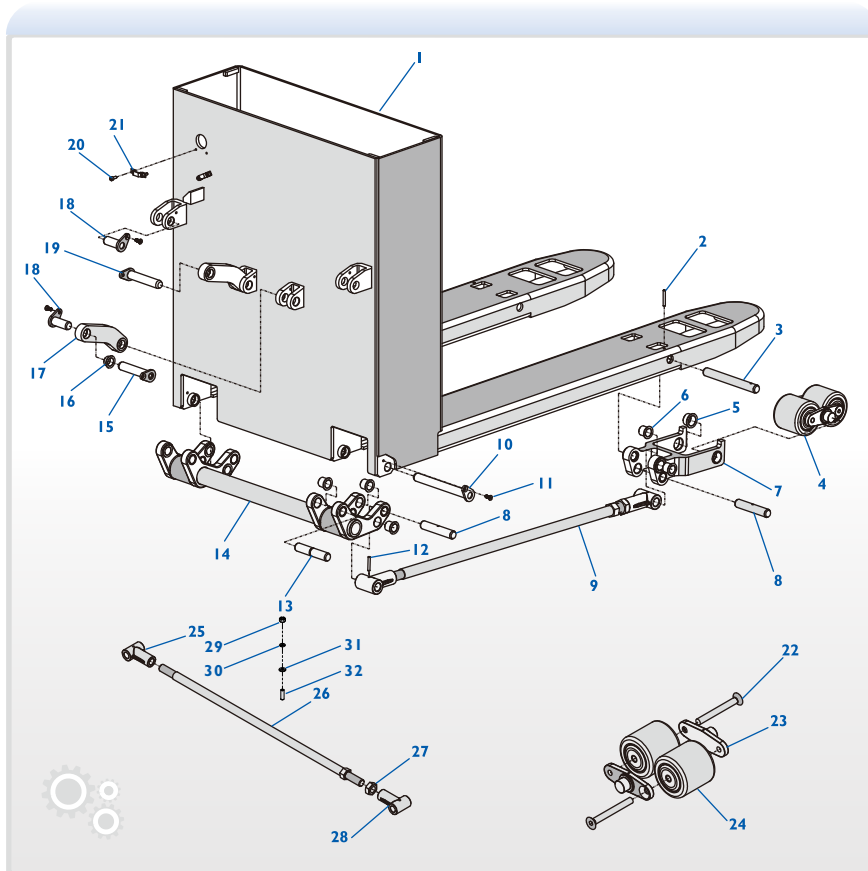
The structure of fork carrier

W16 / 20 Series Electric Pallet Truck

1	WC98000009	Fork carrier welded (W20)	1
	WC98000035	Fork carrier welded (W16)	1
2	WE94000002	Elastic cylindrical pin	2
3	WC97000002	Front wheel pin shaft	2
4		Front wheel assembly	2
5	WC97000042	Turing bearing	4
6	WC97000041	Turing bearing	20
7	WC98000005	The holder of front wheel	2
8	WC97000003	Wheel pin shaft	4
9		Tiller assembly (W20)	2
		Tiller assembly (W16)	2
10	WC98000017	Pin shaft welded III	2
11	WE97000014	Hexagon socket countersunk head screws	8
12	WE94000001	Elastic cylindrical pin	4
13	WC97000004	Back bracket shaft	2
14	WC98000014	Lifting arm welded	1
15	WC98000018	Pin shaft welded IV	1
16	WC97000040	Turning bearing	8
17	WC98000004	Upper rod	2
18	WC98000015	Pin shaft welded	4
19	WC98000016	Pin shaft welded II	1
20	WE97000005	Socket cap screw	4
21	WC98000026	Pipe Clamp	2
22	WC97000016	Screw shaft of front wheel	2
23	WC98000010	The installing side shaft of front wheel	2
24	WC97000017	Front wheel	2
25	WC98000012	The front pull rod head	1

The structure of fork carrier

26	WC98000013	Tie rod welded (W20)	1
	WC98000036	Tie rod welded (W16)	1
27	WC97000018	Left handed nut	1
28	WC98000011	After the pull rod head	1
29	WE96000003	Hexagon nut	2
30	WE95000009	Spring washer	2
31	WE95000011	Plain washer	2
32	WE97000015	Hexagon socket set screw with flat point	2



Driving Assembly

1	WC97000027	Driving system assembly (W20)	1
	WC97000043	Driving system assembly (W16)	1
2	WJ12500001	Stator (W20)	1
	WJ12500046	Stator (W16)	1
3	WJ12500029	Snap spring	1
4	WJ12500028	Ring joint gasket	1
5	WJ12500011	Gear	1
6	WJ12500025	O type washer	1
7	WJ12500019	Bush	1
8	WJ12500020	Inner ring	1
9	WJ12500026	Sealing ring	1
10	WJ12500024	Bearing adjust washer	1
11	WJ12500004	O type washer	1
12	WJ12500003	Deep groove ball bearing	1
13	WJ12500036	Feather key	1
14	WJ12500002	Rotor (W20)	1
	WJ12500047	Rotor (W16)	1
15	WJ12500043	Feather key	1
16	WJ12500008	Draw-in bolt	4
17	WJ12500005	Snap spring	1
18	WJ12500009	Deep groove ball bearing	1
19	WJ12500006	Snap spring	1
20	WJ12500007	End shield	1
21	WJ12500044	Snap spring	1
22	WJ12500042	Brakes (W20)	1
	WJ12500048	Brakes (W16)	1
23	WJ12500049	Hub bolt	5

24	WJ12500041	Driving wheel	1
25	WJ12500017	Output shaft	1
26	WJ12500027	Shaft seal	1
27	WJ12500040	Sealing plug	1
28	WJ12500015	Driven shell	1
29	WJ12500021	Deep groove ball bearing	1
30	WJ12500013	Gear	1
31	WJ12500037	Feather key	1
32	WJ12500045	The drain screw	1
33	WJ12500039	Seal ring	1
34	WJ12500010	Sealing gland	1
35	WJ12500012	Ring	1
36	WJ12500033	Supporting bead	1
37	WJ12500038	Socket cap screw	11
38	WJ12500016	Driven shell cover	1
39	WJ12500032	Snap spring	1
40	WJ12500034	Supporting bead	2
41	WJ12500035	Ring joint gasket	5
42	WJ12500014	Ring	1
43	WJ12500031	Snap spring	1
44	WJ12500022	Deep groove ball bearing	1
45	WJ12500018	Bush	1
46	WJ12500030	Snap spring	1
47	WJ12500023	Cylindrical roller bearing	1

