

---

CAUTION: Owner and Operator MUST read and understand this manual before use the truck.

---



**High Lift Hand Truck  
110**

**Eoslift Automation Technology Corp.  
No.99, Yanjia Road, Yuantong Town, Haiyan, Zhejiang**

**Year of Manufacture: 2016**

# CONTENTS



1 Specifications	Page 1
2 Safety Instructions	Page 1
3 Installation & Adjustment	Page 1
4 TROUBLE SHOOTING GUIDE	Page 4
5 Spare parts list	Page 5

101	Screw	1	133	Cylinder	1
102	Washer	1	134	Screw	1
103	Pump Piston	1	135	Seal Ring	1
104	Guide Ring	1	136	Screw	1
105	Y-Ring	1	137	Screw	1
106	Washer	1	138	Plate	1
107	Snap Ring	1	139	Spring	1
108	Scraper Ring	2	140	Release Indicator	1
109	O-Ring	2	141	O-Ring	1
110	Y-Ring	1	142	Spring	1
111	Pump Cylinder	1	143	Valve Insert	1
112	O-Ring	1	144	O-Ring	8
113	Spring Guide	1	145	Ball	2
114	Spring	1	146	Release Valve	2
115	Hi-pressure Piston	1	147	Spring	2
116	O-Ring	1	148	Seal Ring	2
117	Valve Insert	1	149	Screw	2
118	Cylinder Bush	1	150	Snap Ring	1
119	O-Ring	1	151A	Y-Ring	1
120	O-Ring	1	152A	O-Ring	1
121	Snap Ring	1	153A	O-Ring	1
122	Split Ring	2	154A	Piston	1
123	Rubber Sleeve	1	155A	Piston Rod	1
124	Pendulum Arm	1	156	Seal Ring	1
125	Screw	2	157	Cylinder Nut	1
126	O-Ring	1	161A	Retaining Ring	1
127	Screw	1		assemble	
128	Spring	1	1801	Pump assemble	1
129	Ball Seat	1	1802	Valve Insert assemble	1
130	Pump Housing	1	1803	Piston Rod assemble	1
131	O-Ring	1	1804	Cylinder Nut assemble	1
132	Screw	1	1805	Valve Insert assemble	1

## 1. Specifications

Model	I10	
Rated lifting capacity	1000 kg	
Max. Fork height	800 mm	
Min. Fork height	85 ± 2 mm	
Fork length	1150 mm	
Fork width (outside)	540 mm	680mm
Pump times	Fast: 28	Slow: 78
Descending speed	∠0.1 mm/second	
N.W.	128 kg	133kg

## 2. Safety Instructions

1. The truck shall be used in accordance with instructions handbook.
2. Don't put the hand & foot under the fork at any time.
3. Don't work on the slope surface.
4. Quick lifting is prohibited for loads of more than 300 kg. Any manipulation of the pressure relief valve is strictly prohibited. All assembling, adjusting and maintenance shall only be done by industrial mechanics trained people. These people must be familiar with all safety regulations of European and national where the item is in use relating to the operation and maintenance of pedestrian controlled industrial trucks.
5. Load should be put on the fork center. Side-load is strictly prohibited.
6. The truck shall not be used to transport persons.
7. It is recommended to the driver to wear security shoes.
8. No modifications shall be carried out which adversely affect the compliance of the truck with prEN 1757-4.

## 3. Installation & Adjustment

### 1. Screw(part No.132)

- To prevent oil-leaking from oil tank during transportation, Air Screw (part No.132) is replaced with Oil-sealing Screw in the factory. But it has to be replaced back when you put this truck in use.
- I How to change: Screw out Oil-sealing Screw, then screw in Air Screw , thus keep oil tank always connecting with atmosphere.

### 2. Handle

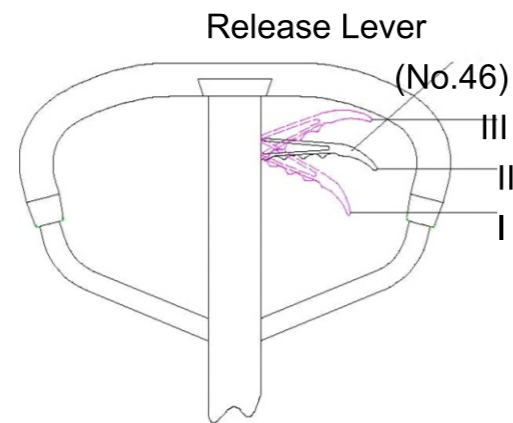
During transportation, the handle is disassembled from the truck and packed separately. It has to be assembled back and adjusted properly and carefully before use.

**A. Handle installation:**

- Take 3 pieces of M10 Nut (No.49) & Hex Wrench from spare parts bag. Select handle to match the truck with the same fitting numbers.
- Assemble the handle on the Handle Base (No.55) with 3 pieces of M10 Nut & Spring Washer tightly.
- Put the chain's Eye Bolt (No.36) in the slot at the front end of Pendulum Arm (No.124)

**B. Handle adjustment**

- There are 3 different positions with different functions for the Release Lever (part No.46). See picture 1

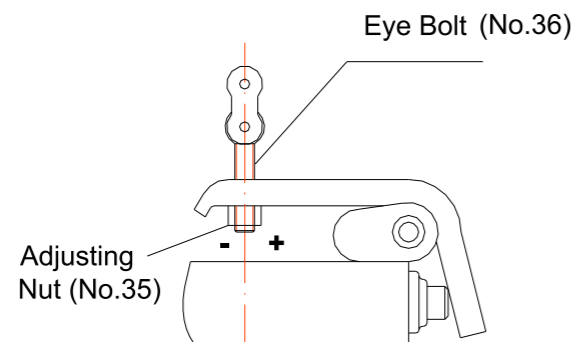


Picture 1

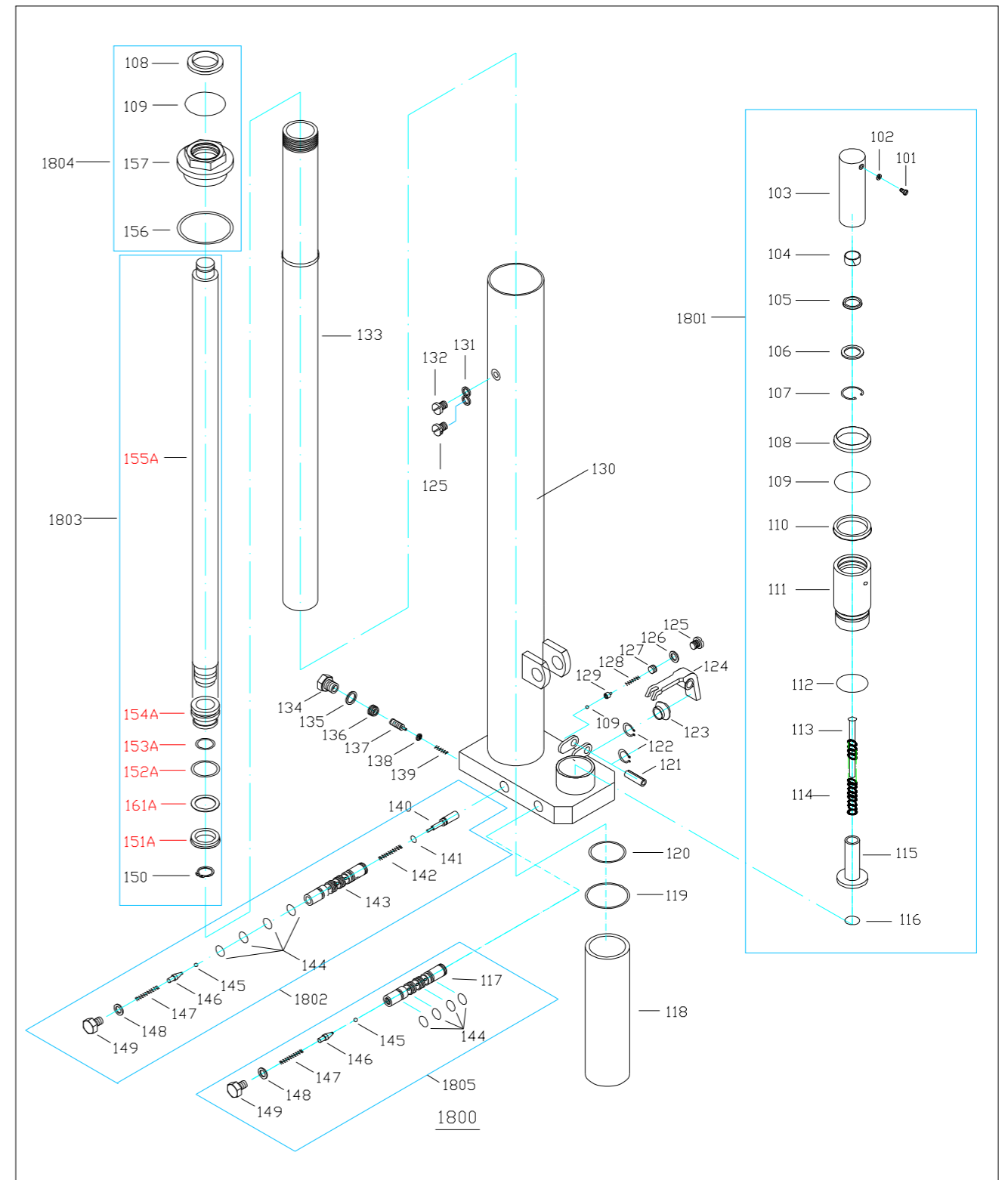
Position I: Quick lifting for fork.  
 Position II: Slow lifting for fork  
 Position III: Descending for fork

- Test different functions by putting the Release Lever in 3 different positions respectively.

If it does not function properly, then adjusting Lock Nut (No.35) by following process. See picture 2



Picture 2

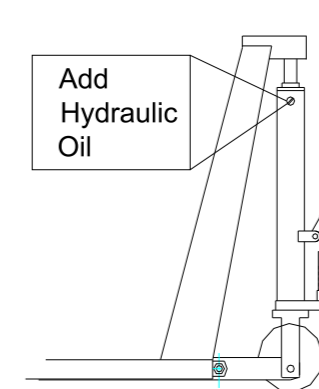


1	Fork	1	34	Handle	1
2	Screw	2	35	Pendulum Arm Nut	1
3	Nut	2	36	Eye Bolt	1
4	Ball	1	37	Chain Connector	3
5	Hold Yoke	1	38	Chain	1
6	Wheel Yoke	1	39	Release Rod	1
7	Centrifugal Axle	2	40	Screw	1
8	Spacer	2	41	Washer	1
9	Steering Wheel	2	42	Positioner	1
10	Snap Ring	8	43	Nut	1
11	Pin	2	44	Washer	1
12	Snap Ring	10	45	Spacer	2
13	Bush	2	46	Release Lever	1
14	Leg	2	47	Screw	1
15	Leg	1	49	Screw	3
16	Bush	1	50	Spring Washer	3
17	Pin	2	51	Pin	1
18	Washer	2	53	Roller	1
19	Nut	2	54	Bush	2
20	Washer	6	55	Handle Seat	1
21	Ball Bearing	8	56	Pin	2
22	Front Wheel	2	57	Screw	2
23	Wheel Axle	2			
24	Roller	4			
25	Bush	2			
26	Washer	4			
27	Spring Washer	2			
28	screw	2			
29	Bush	1			
31	Ball Bearing	1			
32	Spacer	1			
33	Spacer	1			

Problems	Turning direction of Lock Nut
Fork not lifted up	- (clockwise)
Fork not lowering down	+ (counter -clockwise)

3. How to release the air from the pump.

See picture 3



Picture 3

When pushing the handle down, the fork can't be lifted instantly. Please loosen the Screw (No.130) on the pump while pushing the handle down slowly to release the air from the pump. Then tighten the screw.

4. When to add oil

See Picture 3

If the fork can't be pumped up to its rated highest position, you may have to add hydraulic oil into the oil tank. The hydraulic fluid to be used must have a quality of ISO VG22 or equivalence. Mixing of different fluids is prohibited!

#### 4. TROUBLE SHOOTING GUIDE

Items	Symptom	Possible cause	Aliments
1	Fork can not be pumped up	<ol style="list-style-type: none"> <li>1. Low oil level in oil tank.</li> <li>2. Exist air in the hydraulic system.</li> <li>3. Pendulum arm nut is not adjusted properly.</li> </ol>	<ol style="list-style-type: none"> <li>1. Add proper hydraulic oil.</li> <li>2. Fast operating the handle for several times. Bleed the system.</li> <li>3. Adjust pendulum arm screw.(see picture 2)</li> </ol>
2	Fork can't be released down	<ol style="list-style-type: none"> <li>1. Fork blocked.</li> <li>2. Pendulum arm nut not adjusted properly.</li> </ol>	<ol style="list-style-type: none"> <li>1. Check and remove the block.</li> <li>2. Adjust pendulum arm nut properly. (see picture 2)</li> </ol>
3	Fork can't be pumped up to rated highest position.	Oil is not enough.	Add hydraulic oil. (see picture 3)

#### 5. Spare parts list

