

**Eoslift**

**OPERATION&SERVICE MANUAL**

**MODEL:H10J  
MANUAL STACKER**



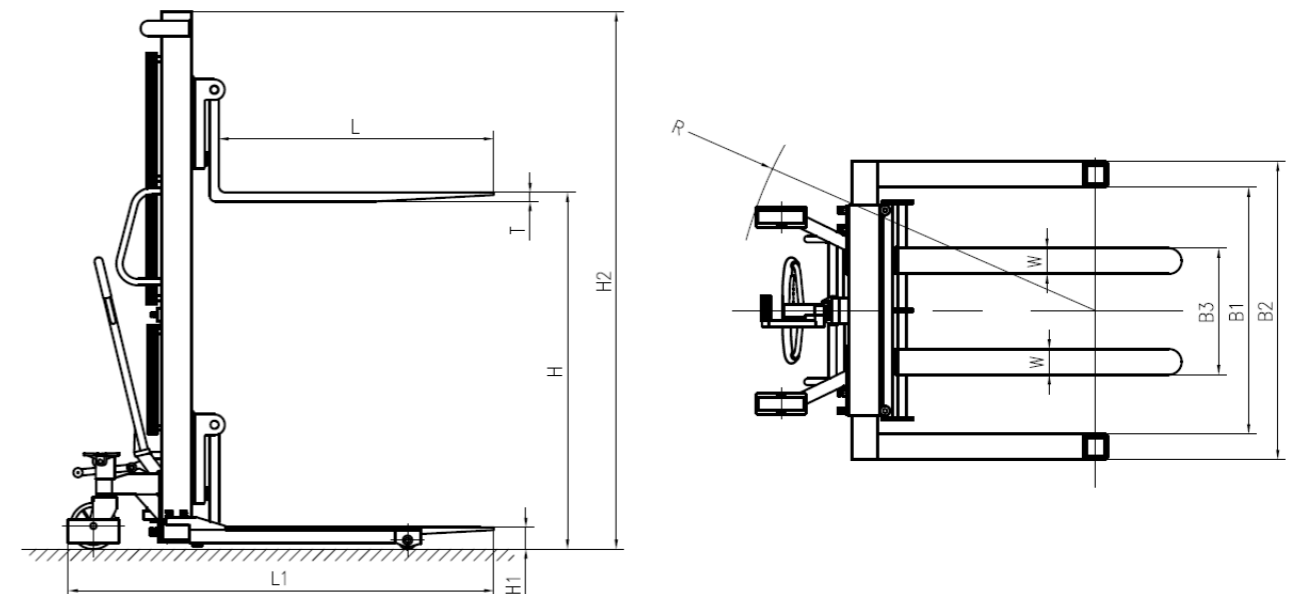
**Eoslift Automation Technology Corp.  
No.99, Yanjia Road, Yuantong Town, Haiyan, Zhejiang**

# CONTENTS

1 Structural Data Form	Page 1
2 Safety Guidance	Page 2
3 Maintenance	Page 3
4 To Adjust Release Device	Page 3
5 Trouble Shooting	Page 3
6 Parts List	Page 5

## 1. Structural Data Form EJ(Single frame)

Model		H10J
Manufacturer		EOSLIFT
Load Capacity	lb	2200
Inner Width of Legs	B1(in.)	33-49
Outer Width of Legs	B2(in.)	41-57
Min.Fork Height	H1(in)	1.4
Lift Height	H(in.)	63
Min.Mast Height	H2(in.)	80
Fork Length	L(in.)	42
Fork Width	W(in.)	3.9
Fork Thick	T(in.)	1.4
Fork Ajustable	B3(in.)	8.3-33
Load wheels	in.	$\phi 2.8 \times 2.8$
Steer wheels	in.	$\phi 7.1 \times 2$
Overall Length	L1(in.)	65
Turning Radius	R(in.)	51



## 2. Safety Guidance

- 2.1 Operator should read all warning signs and instructions here and on the stacker before using it.
- 2.2 Do not operate a stacker unless you are familiar with it and have been trained or authorized to do so.
- 2.3 Do not operate a stacker unless you have checked its condition. Give special attention to the chain, wheels, handle, guide frame, pilot wheel, mast, battery, etc.
- 2.4 Do not use on a slopping surface, rough, explosive or dangerous environment.
- 2.5 Do not lift people using the forks.
- 2.6 While lifting the forks, do not allow anyone to stand under or around the forks.
- 2.7 The operator should use safety shoes and gloves to protect against crushing or cutting hands or feet. Keep feet out from underneath the load.
- 2.8 Do not move the stacker when the goods are lifted to the height more than 2 feet.
- 2.9 While the goods are being transported or lifted, all people should stay a minimum of 2 feet away from stacker.
- 2.10 The weight of goods should be evenly distributed on the two forks, do not use only one fork. The center of gravity of goods should be in the center of two forks.
- 2.11 Do not load beyond the maximum capacity according to the capacity diagram. Heavy loads should not be allowed to remain on the forks for a long time after operation is over.
- 2.12 Before using or charging it, check the battery connection.
- 2.13 Charging should be in dry and ventilated location, and far away from any fire.
- 2.14 Keep the forks in the lowest position when not in use.
- 2.15 Do not use the truck when traveling on semi trailers.
- 2.16 Do not use the truck in a potentially explosive atmosphere.
- 2.17 Do not use the truck as a vehicle jack.
- 2.18 Do not use under windy conditions.
- 2.19 Do not use the truck in places insufficiently illuminated.
- 2.20 Do not use the truck with guarding removed.
- 2.21 Stacker should be parked on a smooth & level place, keep power off, lower the forks to the min. height, and press on the brake. Stacker should not be parked in an unsafe area such as busy streets, intersections, narrow roads, blind curves, slopes, soft ground, place that are flammable or fire fighting access.
- 2.22 In unknown environment, the operator should be careful while operating the pallet truck.
- 2.23 Unauthorized truck modification is not permitted. No modifications or alterations to a powered industrial truck, which may affect, for example, capacity, stability or safety requirements of the truck, shall be made without the prior written approval of the original truck manufacturer, its authorized representative, or a successor thereof. This includes changes affecting, for example braking, steering, visibility and the addition of removable attachments. When the manufacturer or its successor approve a modification or alteration, they shall also make and approve appropriate changes to capacity plate, decals, tags and operation and maintenance handbooks. Only in the event that the truck manufacturer is no longer in business and there is no successor in the interest to the business, the user may arrange for a modification or alteration to a powered industrial truck, provided, however, that the user shall: a) Arrange for the modification or alteration to be designed, tested and implemented by an engineer(s) expert in industrial trucks and their safety. b) Maintain a permanent record of the design, test(s) and implementation of the modification or alteration. c) Approve and make appropriate changes to the capacity plate(s), decals, tags and instruction handbook. d) Affix a permanent and readily visible label to the truck stating the manner in which the truck has been modified or altered together with the date of the modification or alteration, and the name and address of the organization that accomplished the tasks.

## 3. Maintenance

3.1 Hydraulic oil - Check the oil level every six months. The oil must be hydraulic oil: ISO VG32, its viscosity should be 32 CST at 100°F total volume is about 4.2 qts. use temperature 0°F - 120°F Replace the hydraulic oil (every 12 months).

3.2 Daily check and maintenance - Check the stacker daily. Special attention should be paid to the wheels, the axles, as thread, rags, etc., it may block the wheels, the fork and the mast, the chain, the battery should be checked, too. The forks should be unloaded and lowered in the lowest position when the job is over.

3.3 Lubrication - Use motor oil or grease to lubricate all movable parts.

## 4. To adjust release device

On the draw-bar of this hand stacker, you can find the control handle (① on Page21) which can be regulated in three positions: LOWER = to lower the forks; NEUTRAL = to move the load, and LIFT = to raise the fork. These three positions have been pre-positated at the factory. If however they have been changed, you can adjust according to following step:

4.1 If the forks elevate while pumping in the NEUTRAL position, turn the adjusting nut(Ⓜ on Page21) on the adjusting bolt (Ⓢ on Page21) clockwise or turn the adjusting screw (Ⓢ on Page10) clockwise until pumping action does not raise the forks and the NEUTRAL position functions properly.

4.2 If the forks descend while pumping in the NEUTRAL position, turn the nut (Ⓜ on Page21) or the screw (Ⓢ on Page10) counter-clockwise until the forks do not lower.

4.3 If the forks do not descent when the control handle (① on Page21) is in the LOWER position, turn the nut (Ⓜ on Page21) or the screw(Ⓢ on Page10) clockwise until raising the control handle (① on Page21) lowers the forks. Then check the NEUTRAL position according to item 4.1 and 4.2 to be sure the nut (Ⓜ on Page21) and the screw (Ⓢ on Page10) is in the proper position.

4.4 If the forks do not elevate while pumping in the LIFT position, turn the nut (Ⓜ on Page21) or the screw (Ⓢ on Page10) counter-clockwise until the forks elevate while pumping in the LIFT position. Then check the LOWER and NEUTRAL position according to item 5.1, 5.2 and 5.3.

## 5. Troubles shooting

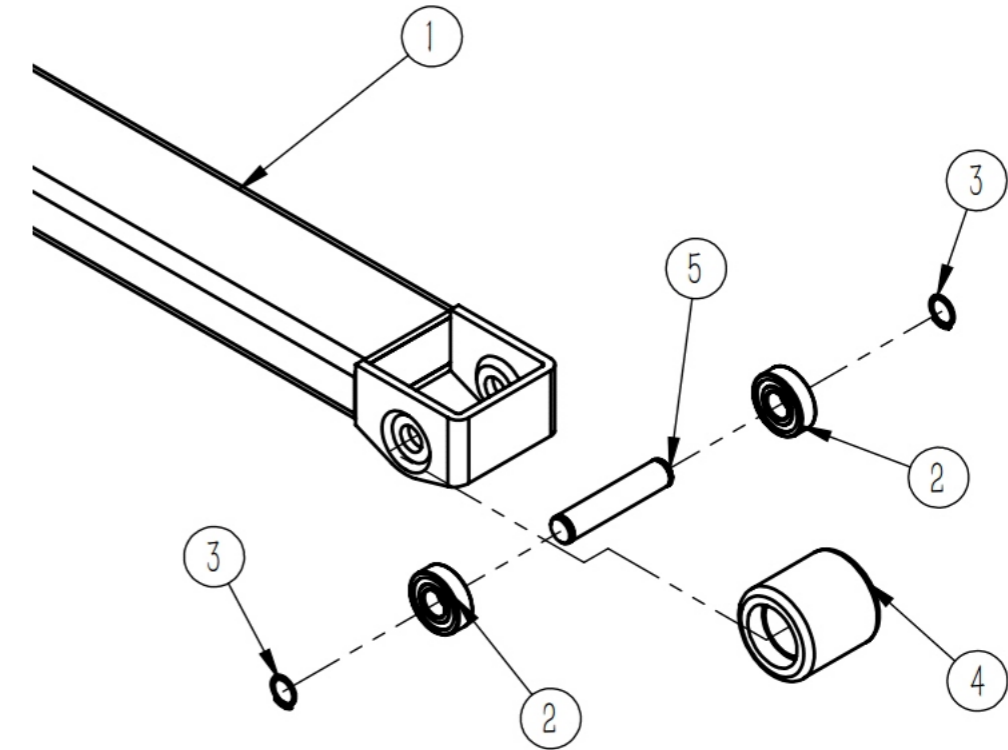
NO.	Trouble	Possible cause	Fixing methods
1	The forks cannot be lifted to max. height	- The hydraulic oil is low	-Add oil - remove screw on top of pump to add oil. Do not over fill.
2	The forks cannot be lifted	-The hydraulic oil is low -The oil has impurities -The adjusting nut is too high and keeping the pump Valve stuck open -Bleed the air from the system	-Fill oil to proper level -Change the oil -Adjust the nut or screw to proper level and remove the air in the system -Squeeze and hold the lever while pumping the handle 10 - 20 times

3	The forks cannot be descended	<ul style="list-style-type: none"> <li>-The piston rod or pump is deformed resulting from partial loading, cargo slanting to one side or over-loading</li> <li>-The truck was stored with the forks raised for extended period of time and now it jams.</li> <li>-The adjusting nut or screw is not in correct position</li> </ul>	<ul style="list-style-type: none"> <li>-Replace piston rod and/or pump</li> <li>-Keep the forks at the lowest setting while Not in use, and keep parts lubricated.</li> <li>-Adjust the nut or screw at base of handle</li> </ul>
4	Leaks	<ul style="list-style-type: none"> <li>-Sealing parts worn or damaged</li> <li>-Some parts are cracked or worn</li> </ul>	<ul style="list-style-type: none"> <li>-Replace worn parts with new parts</li> <li>-Replace worn parts with new parts</li> </ul>
5	The Forks descend without the release valve activated	<ul style="list-style-type: none"> <li>-Impurities in the oil cause the release valve to be unable to close tightly</li> <li>-Some parts of the hydraulic system are cracked or damaged</li> <li>-Air present in the oil</li> <li>-Sealing parts worn or damaged</li> <li>-The adjusting nut or screw is not in the correct position</li> </ul>	<ul style="list-style-type: none"> <li>-Replace with new oil</li> <li>-Inspect and replace with new parts</li> <li>-Remove the air and check for air leaks</li> <li>-Replace with new parts</li> <li>-Adjust the nut or screw at base of handle</li> </ul>

NOTE: DO NOT ATTEMPT TO REPAIR THE PALLET TRUCK UNLESS YOU ARE TRAINED AND AUTHORIZED TO DO SO.

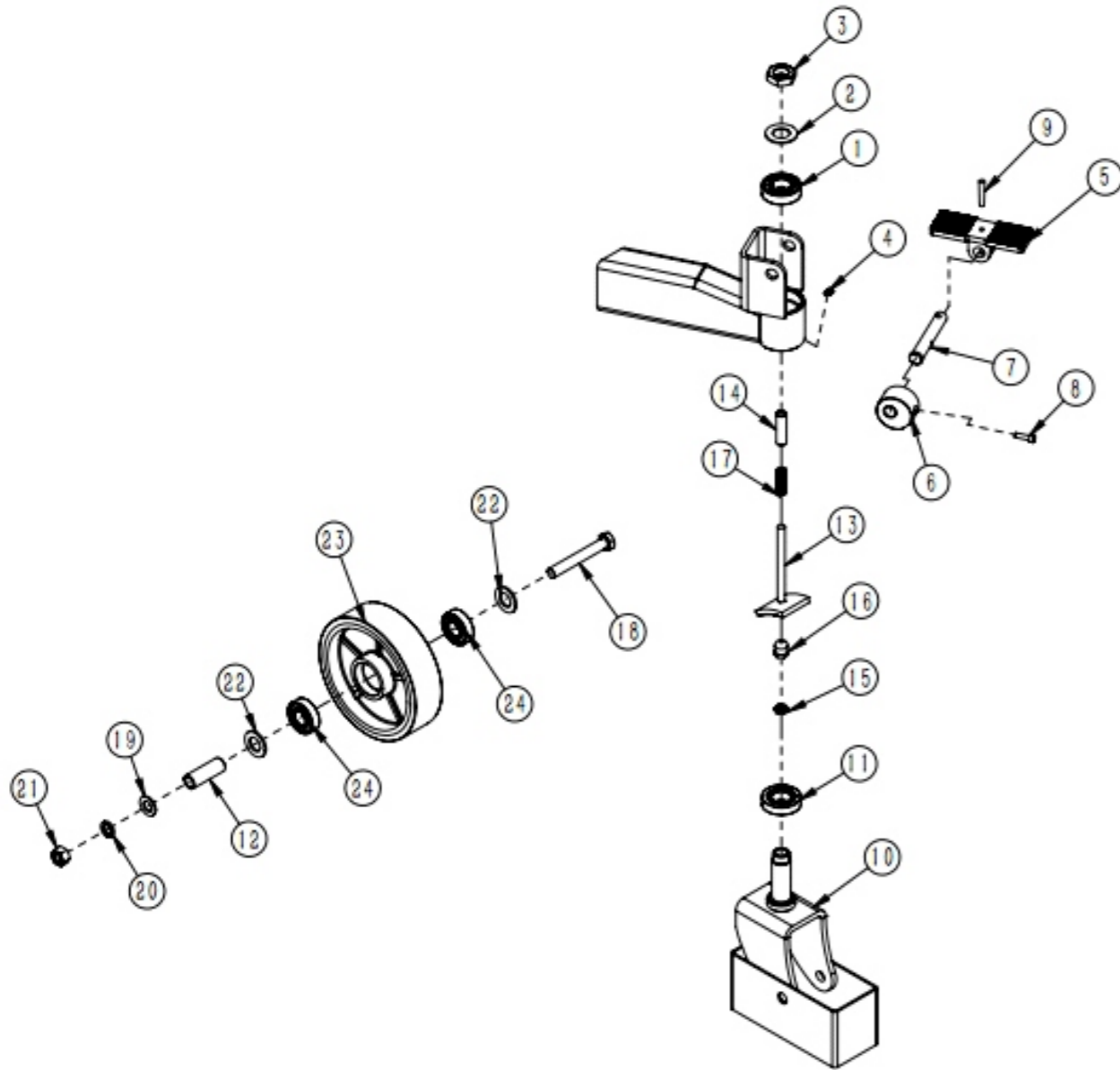
## 6.Parts List

### Front wheel assembly



No.	Part Number	Description	Qty.
1	WC02000708	The right fork leg welded,5012(1.0t)	1
	WC02000707	The left fork leg welded,5012(1.0t)	1
2	WC02000022	deep groove ball bearing6204	4
3	WE07000004	Circlip for Shaft 20,black	4
4	WC02000227	iron corePU wheel φ70×70,PU red	2
	WC02000286	nylon wheelφ70×70	
5	WC02000259	steering wheel axle	2

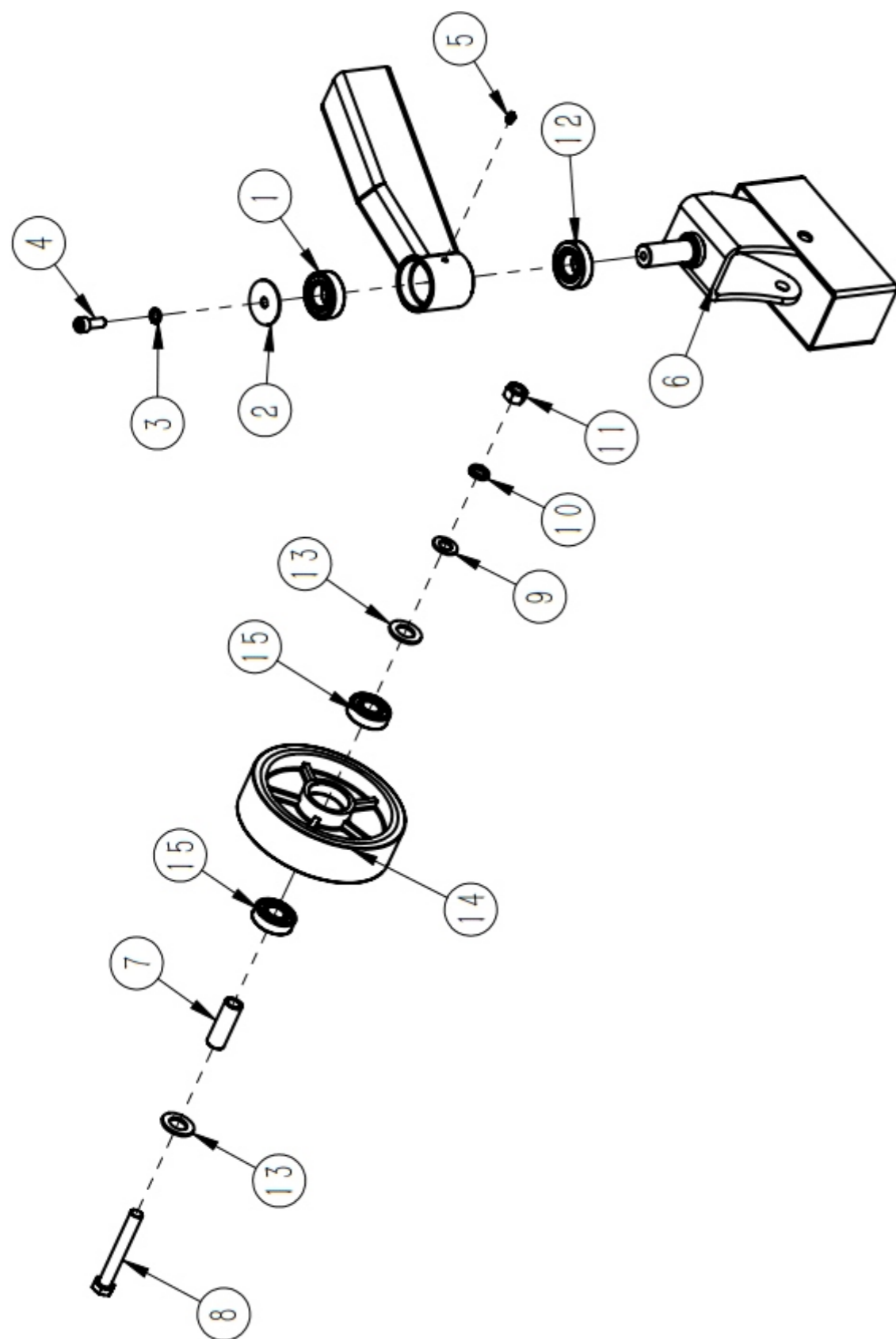
### Guide wheel with brake



No.	Part Number	Description	Qty.
1	WC02000224	GB276,deep groove ball bearing 6205, two-side dusty cover	1
2	WC02000343	gasket	1
3	WE04000019	Gb6173 Hex nut M22×1.5,galvanized	1
4	WC02000019	JB7940.4,Pressure distribution type forced filling oil cup 6	1

5	WC02000345	pedal plate,galvanized	1
6	WC02000346	pinch roller,galvanized	1
7	WC02000347	axle,galvanized	1
8	WE03000021	GB70.1 Hex socket screw M6×20, galvanized	1
9	WE06000012	Gb117 Pin 6×42,galvanized	1
10	WC02000350	steering wheel frame with brake,black	1
11	WC02000225	GB297,circular cone running pulley bearing 30205	1
12	WC02000348	wheel axle sleeve	1
13	WC02000351	brake rod,black	1
14	WC02000342	cover	1
15	WE04000020	GB6172.1 Hex nut M10,galvanized	1
16	WC02000344	adapter sleeve,galvanized	1
17	WC02000349	reset spring	1
18	WE01000004	Gb5780 Hex bolt M14×100,galvanized	1
19	WE05000012	Gb95 Plain washer 14,galvanized	1
20	WE05000013	Gb93 Spring washer 14,galvanized	1
21	WE04000012	Gb6170 Hex nut M14,galvanized	1
22	WE05000014	Gb95 Plain washer 20,galvanized	2
23	WC02000226	iron core PU wheelφ180×50,PU red, iron coreblack	1
	WC02000285	nylon wheelφ180×50(flower shape wheel)	
	WC02000435	nylon wheel φ180×50(flat)	
24	WC02000022	GB276,deep groove ball bearing6204, two-side dusty cover	2

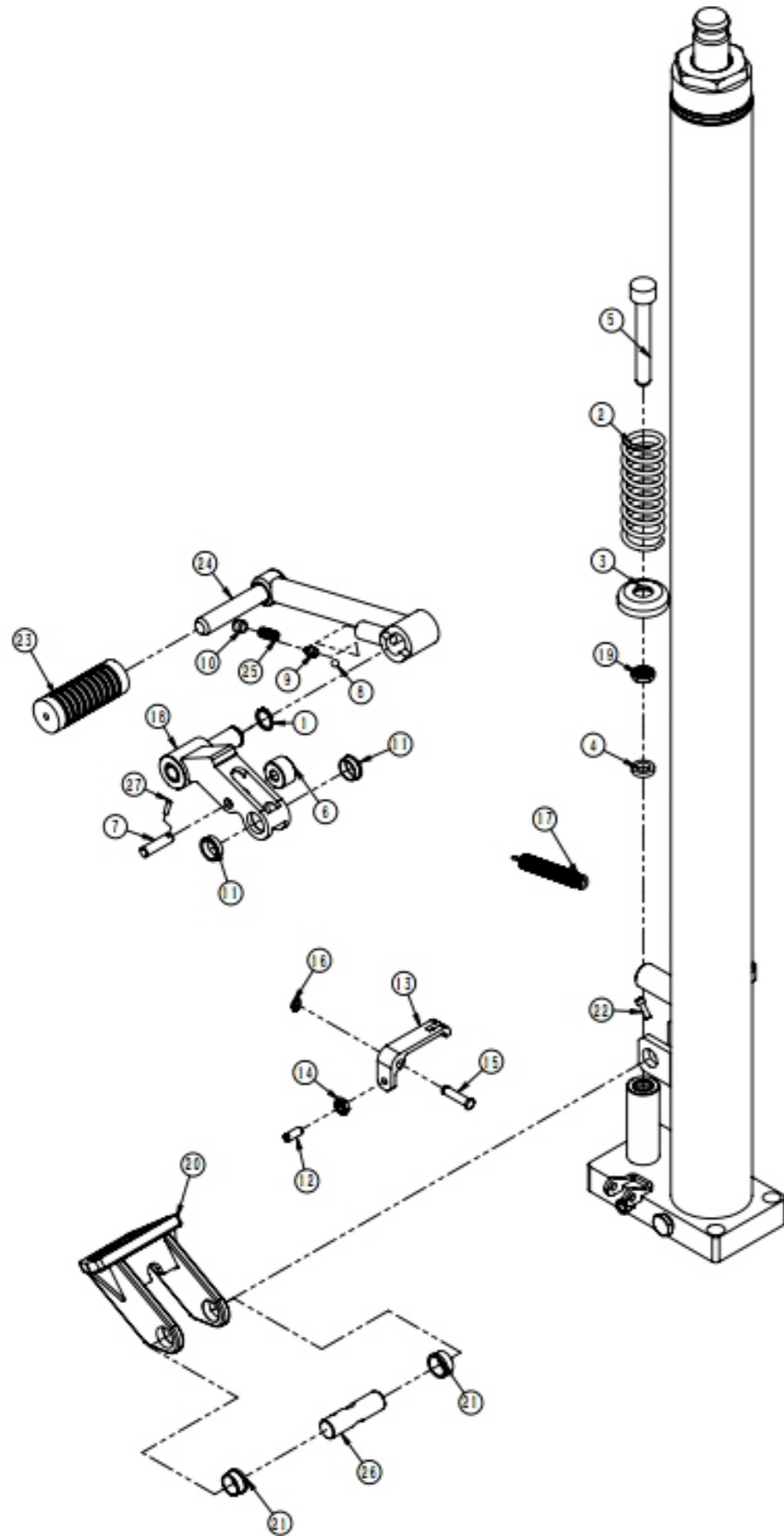
### Guide wheel



### Guide wheel

NO.	Part Number	Description	Qty.
1	WC02000224	GB276,deep groove ball bearing6205, two-side dusty cover	1
2	WC02000352	axle cover,galvanized	1
3	WE05000002	GB93 Spring washer 10,galvanized	1
4	WE03000004	GB70.1 Hex socket screw M10×25,galvanized	1
5	WC02000019	JB7940.4,Pressure distribution type forced filling oil cup 6	1
6	WC02000353	trailing wheel,black	1
7	WC02000348	wheel axle sleeve	1
8	WE01000004	GB5780 Hex bolt M14×100,galvanized	1
9	WE05000012	GB95 Plain washer 14,galvanized	1
10	WE05000013	GB93 Spring washer 14,galvanized	1
11	WE04000012	GB6170 Hex nut M14,galvanized	1
12	WC02000225	GB297,circular cone running pulley bearing 30205	1
13	WE05000014	GB95 Plain washer 20,galvanized	2
14	WC02000226	iron core PU wheelφ180×50,PU red,iron coreblack	1
	WC02000285	nylon wheelφ180×50(flower shape wheel)	
	WC02000435	nylon wheelφ180×50(flat)	
15	WC02000022	GB276,deep groove ball bearing6204, two-side dusty cover	2

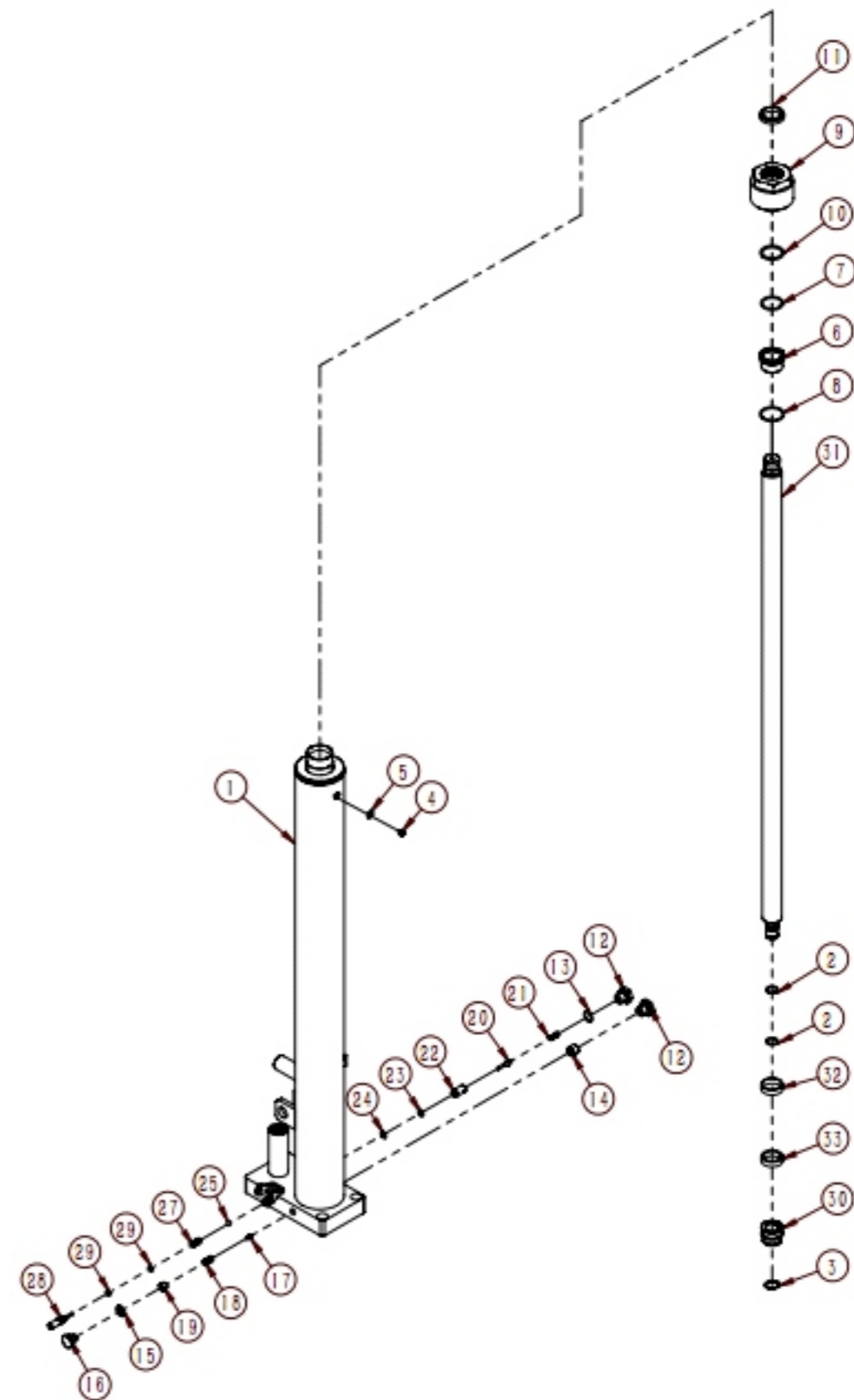
### Cylinder assembly 1



NO.	Part Number	Description	Qty.
1	WE07000004	GB894.1 Circlip for Shaft 20,black	1
2	WC02000365	pressure spring	1
3	WC02000108	spring cover,galvanized	1
4	WC02000387	seal ringUHS14	1
5	WC02000363	pump core	1
6	WC02000390	trundle,galvanized	1
7	WC02000391	roller shaft,galvanized	1
8	WC02000069	GB308,steel ball S7	1
9	WC02000393	spring seat	1
10	WC02000375	bolt	1
11	WC02000401	reverssliding bearing30/23×20×8	2
12	WE03000003	GB73 Screw M8×20,galvanized	1
13	WC02000377	unloading plate,black	1
14	WE04000003	GB6172.1 Hex nut M8,galvanized	1
15	WC02000378	melt,galvanized	1
16	WE07000012	GB894.1 Circlip for Shaft 8,black	1
17	WC02000397	extension spring	1
18	WC02000395	pedal stand,black	1
19	WC02000388	dusty seal ring DH14	1
20	WC02000399	handle seat,black	1
21	WC02000400	reverssliding bearing30/23×20×11.5	2

22	WE03000016	GB70.1 Hex socket screw M5×16,galvanized	1
23	WC02000394	rubber sleeve	1
24	WC02000396	pedal,black	1
25	WC02000392	spring	1
26	WC02000398	pin roll,galvanized	1
27	WE06000016	GB117 Pin 4×18,black	1

Cylinder assembly2

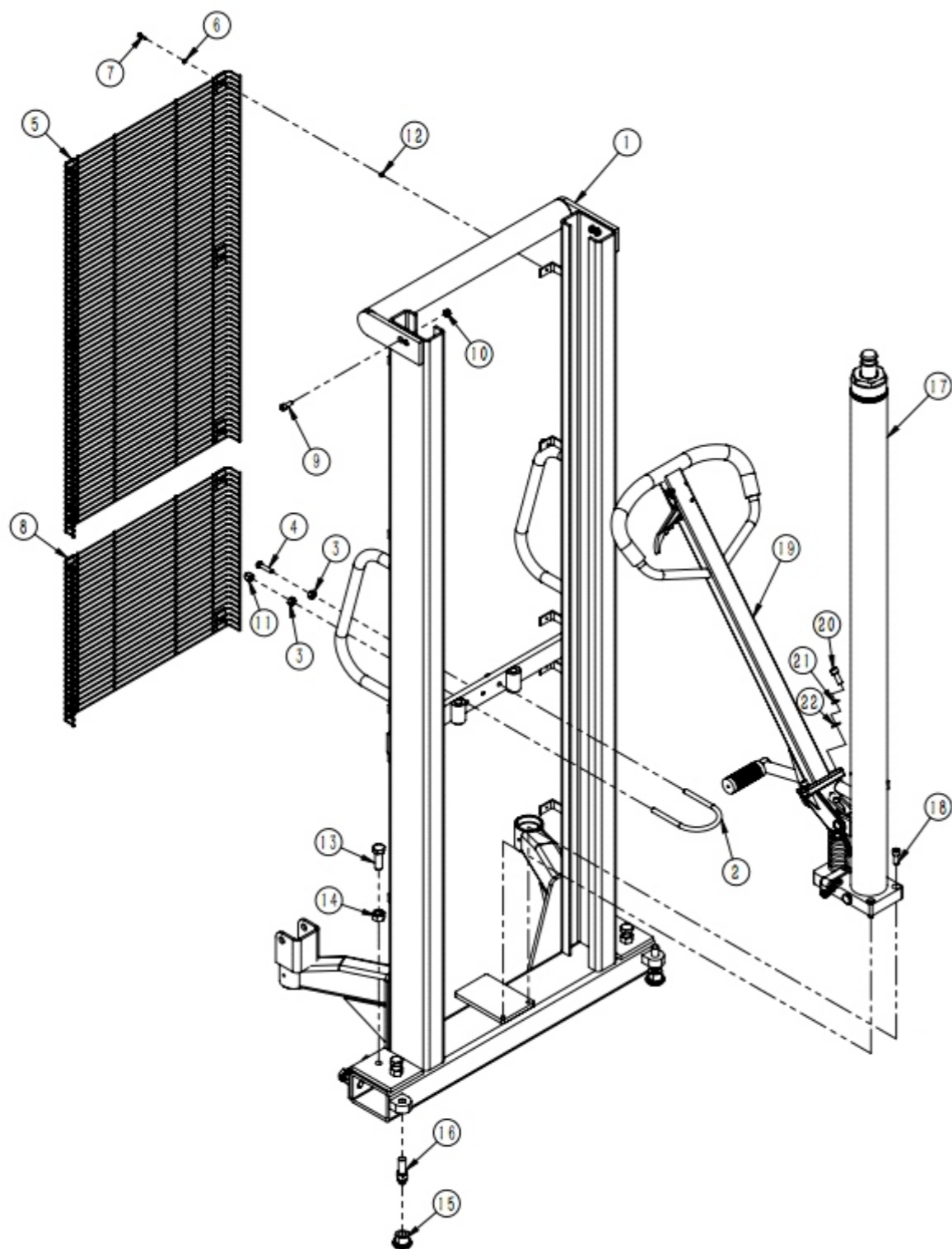




NO.	Part Number	Description	Qty.
1	WC 02000358	cylinders(1.6),black	1
2	WC02000382	GB3452.1,O-ringφ15×2.65	2
3	WE07000004	GB894.1 Circlip for Shaft 20,black	1
4	WE03000023	GB818 Screw M6×10,galvanized	1
5	WC02000383	GB982,sseal washer 6	1
6	WC02000364	guide sleeve	1
7	WC02000385	GB3452.1,O-ringφ31.5×2.65	1
8	WC02000384	GB3452.1,O-ringφ34.5×2.65	1
9	WC02000362	hood,galvanized	1
10	WC02000386	GB3452.1,O-ringφ31.5×3.55	1
11	WC02000110	dusty seal ring DHS31.5	1
12	WC02000369	left pluf screw	2
13	WC02000115	GB3452.1,O-ringφ16×1.8	2
14	WC02000381	flow-limiting valve assembly	1
15	WC02000389	GB982,sseal washer 12	1
16	WC02000376	plug screw,galvanized	1
17	WC02000045	safety valve	1
18	WC02000374	adjustable spring	1
19	WC02000375	bolt	1
20	WC02000372	pump core	1
21	WC02000370	pump core spring	2
22	WC02000371	valve pocket	1

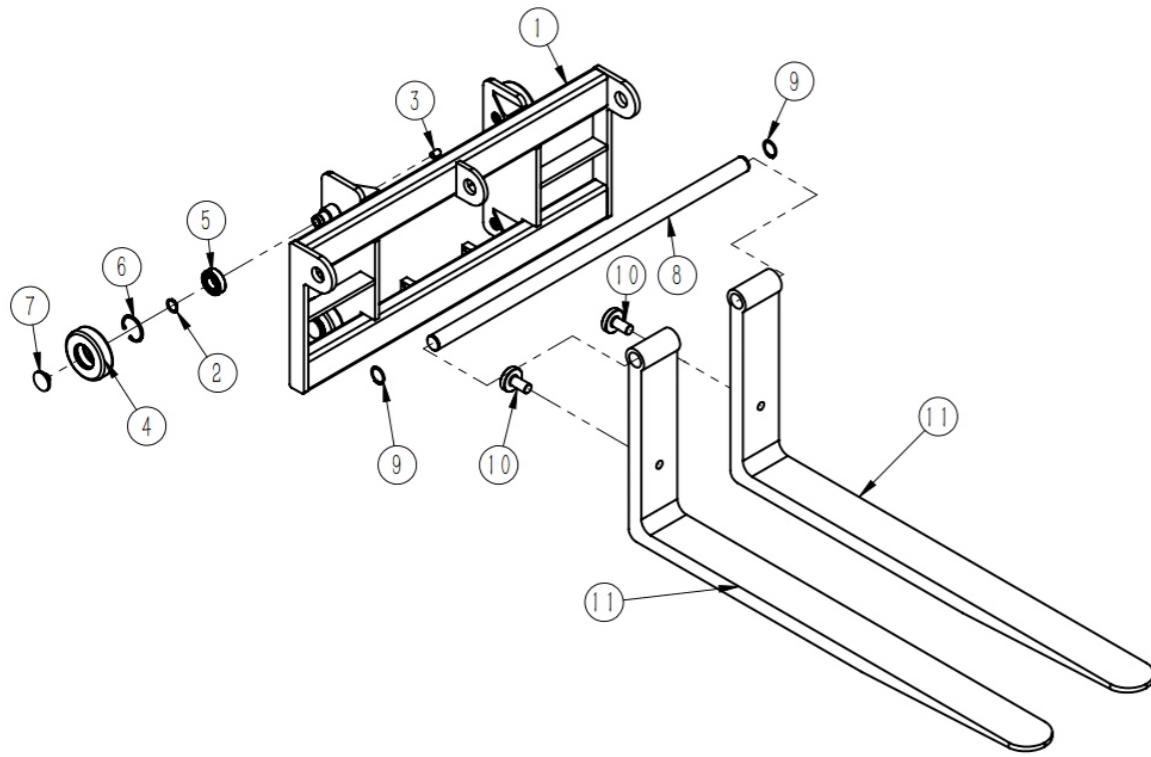
23	WC02000132	GB3452.1,O-ringφ9.0×1.8	1
24	WC02000373	sealing washer	1
25	WC02000069	GB308,steel ball S7	1
26	WC02000366	dirt-proof boot	1
27	WC02000368	unloading spring	1
28	WC02000367	unloading rod	1
29	WC02000117	GB3452.1,O-ringφ6.9×1.8	2
30	WC02000361	piston	1
31	WC02000360	piston rod(1.6)	1
32	WC02000380	guid ring for piston ZS35	1
33	WC02000379	seal ringYXD35	1

### Forks carriage



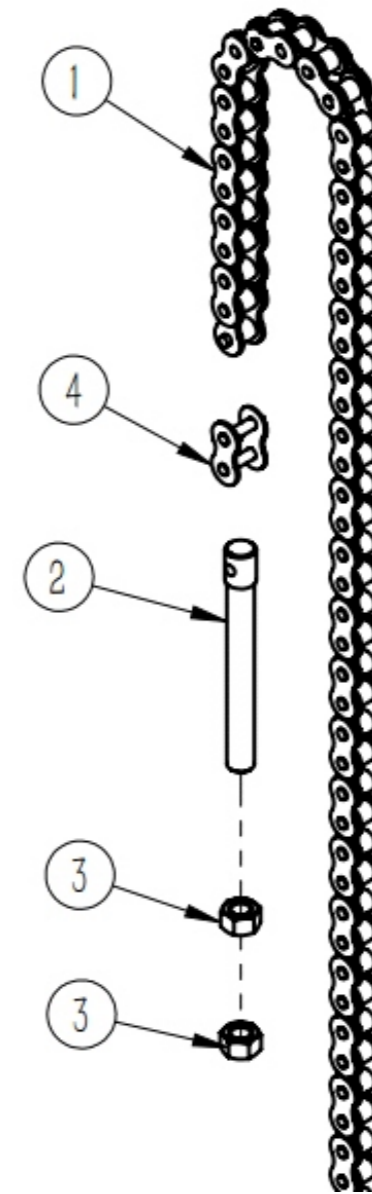
NO.	Part Number	Description	Qty.
1	WC02000721	outer mast,5012	1
2	WC02000355	locking ring,galvanized	1
3	WE04000009	GB6170 Hex nut M10,galvanized	3
4	WE01000002	GB5781 Hex bolt M10×50,galvanized	1
5	WC02000357	gauze,black	1
6	WE05000004	GB95 Plain washer 5,galvanized	11
7	WE03000016	GB70.1 Hex socket screw M5×16,galvanized	11
8	WC02000330	gauze pad,black	1
9	WE03000014	GB70.1 Hex socket screw M8×20,galvanized	4
10	WE04000015	GB889.1 Hex lock nut M8,galvanized	4
11	WE04000013	GB802 Cap Nut M10,galvanized	2
12	WE04000005	GB6170 Hex nut M5,galvanized	11
13	WE01000006	GB5783 Hex bolt M16×40,galvanized	8
14	WE04000022	GB6170 Hex nut M16,galvanized	8
15	WC02000710	Support shaft II ,galvanized	2
16	WC02000709	Support shaft I,galvanized	2
17	WC01000020	Black cylinder assembly (1.6)	1
18	WE03000004	GB70.1 Hex socket screw M10×25,galvanized	2
19	WC02000338	EOS-HS handle	1
20	WE03000004	GB70.1 Hex socket screw M10×25,galvanized	3
21	WE05000002	GB93 Spring washer 10,galvanized	3
22	WE05000009	GB95 Plain washer 10,galvanized	3

### Roller chain



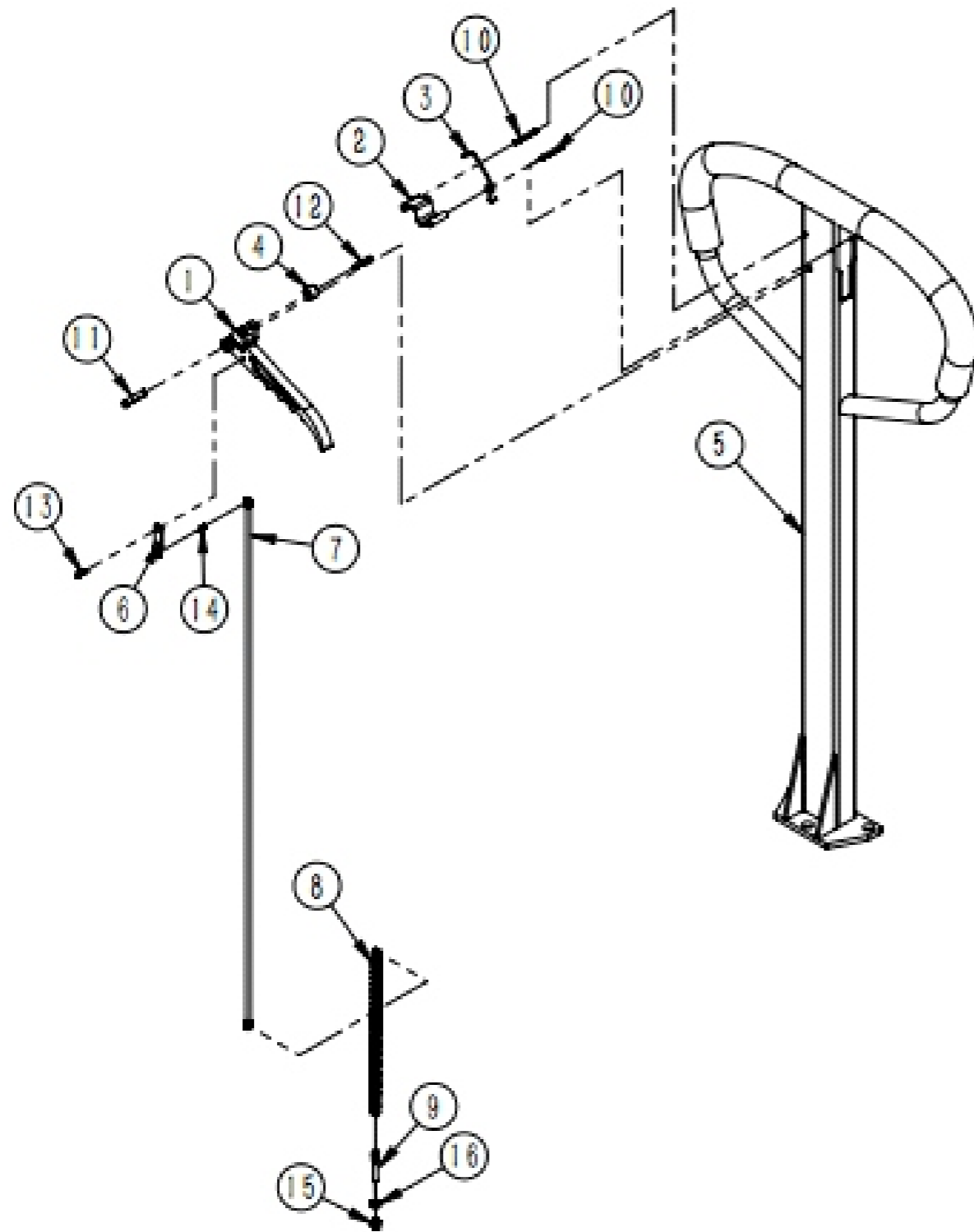
NO.	Part Number	Description	Qty.
1	WC02000722	fork guide plate,black	1
2	WE07000010	GB894.1 Circlip for Shaft 25,black	4
3	WE03000019	GB77 Hexagon flat set screw M12×20,galvanized	8
4	WC02000231	steel wheel	4
5	WC02000224	GB276,deep groove ball bearing6205, two-side dusty cover	4
6	WE07000007	GB893.1 Cieclip for hole 52,black	4
7	WC02000232	steel wheel cap	4
8	WC02000283	axle (830),galvanized	1
9	WE07000011	GB894.1 Circlip for Shaft 32,black	2
10	WC02000284	adjustable bolt,galvanized	2
11	WC02000711	telescope-feed fork,black	2

### Handle assembly



NO.	Part Number	Description	Qty.
1	WC02000748	chain	2
2	WC02000260	bolt	2
3	WE04000012	GB6170 Hex nut M14,galvanized	4
4	WC02000222	single row running pulley chain CL connect 12A-1	4

Handle assembly



Handle assembly

NO.	Part Number	Description	Qty.
1	WJ10800036	EOS-HS handle-finger handle	1
2	WJ10800037	EOS-HS handle-position sheet	1
3	WJ10800038	EOS-HS handle-torsion spring	1
4	WJ10800039	EOS-HS handle-cooper roller	1
5	WJ10800040	EOS-HS handle-handle weldment	1
6	WJ10800041	EOS-HS handle-connecting sheet of pull pole	1
7	WJ10800042	EOS-HS handle-pull pole	1
8	WJ10800043	EOS-HS handle-chain	1
9	WJ10800044	EOS-HS handle-adjusting bolt	1
10	WJ10800045	EOS-HS handle-Pin	2
11	WJ10800046	EOS-HS handle-Pin	1
12	WJ10800047	EOS-HS handle-Pin	1
13	WJ10800048	EOS-HS handle-Pin	1
14	WJ10800049	EOS-HS handle-Pin	1
15	WJ10800050	EOS-HS handle-nut	1
16	WJ10800051	EOS-HS handle-fastening nut	1