

ATTENTION: TO INSURE SAFE AND EASY USE OF YOUR WESCO HIGH LIFT TRUCK, READ THESE INSTRUCTIONS ENTIRELY BEFORE USING.

Instruction Manual

Electric Stainless Hi-Lift Truck

Part Number: 272860



Note: Operator MUST read and understand these operating instructions before using this Lift.

Table of Contents

1	General Information	2
1.1	Description.....	2
1.2	Specifications.....	2
2	Installation.....	2
3	Battery.....	3
4	Maintenance.....	4
5	Safety Information.....	4
6	Trouble Shooting.....	5
7	Part Information.....	6
9.1	Frame Assembly Part Diagram.....	6
9.2	Frame Assembly Part List.....	7
9.3	Pump Assembly Part Diagram.....	8
9.4	Pump Assembly Part List.....	9
9.5	Handle Assembly Part Diagram.....	10
9.6	Handle Assembly Part List.....	10

ATTENTION: TO INSURE SAFE AND EASY USE OF YOUR WESCO HIGH LIFT TRUCK, READ THESE INSTRUCTIONS ENTIRELY BEFORE USING.

1. GENERAL INFORMATION

NOTE: All of the information reported herein is based on data available at the moment of printing. We reserve the right to modify our own products at any moment without notice and liability in any sanctions. So, it is suggested to always verify possible updates and changes.

1.1 DESCRIPTION

Thank you for purchasing a Wesco Stainless Electric Hi-Lift. This pallet truck is designed for transporting and horizontal lifting and comes with a 1 year pump warranty. The unit features nylon load and steering wheels, a 12 volt battery charger included, 180° steering arc and 316 stainless steel forks.

1.2 SPECIFICATIONS

Part Number	272760
Model	SSTHL27E
Capacity	2,200 lbs
Weight	329 lbs
Fork Lowered Height	3.3"
Fork Raised Height	31.5"
Single Fork Width	6.5"
Fork Length	46"
Overall Width	27"
Overall Length	61"
Overall Height	48"
Telescoping	Yes
Steering & Load Wheels	Nylon

Battery	Battery Overall Dimension		
V-Ah	(inches)		
12V	11	6.8	7.5

Power Pack Technical Specification

Rated Voltage	Rated Power	Rotation Speed of Motor	Max Pressure
12V	1,200W	4,000RPM	25MPa

2. INSTALLATION

To save freight, the truck is separated into two parts. Two parts are separately packed. Please install them according to following instructions:

- 1) Undo two screws (S164H), take down the battery cover (E717).
- 2) Use hexagon head bolts (SE708) and spring washers (SE709) to connect the battery base (SE718) and rhombus plate assembly (SE729), then tighten the bolts.
- 3) Remove the plugs on high pressure tube (E705) and pump joint (SE706). Feed the high pressure tube through the hole on front wall of battery base (SE718). Connect the pump joint (SE706) with high pressure tube (E705), then tighten them. If your electric high lift truck contains battery, skip Steps 4 and 5, continue from Step 6. Otherwise, continue from Step 4.
- 4) Install one traction battery (E732) on the battery base (SE718). (For the specification of battery please refer to Section 1).

2. INSTALLATION (CONTINUED)

- 5) Connect two joints of the cable with two fasteners of the battery (E732). Make sure to let the red one connect the anode, the black one connect the cathode. Then tighten them.
- 6) Set the handle assembly on the external cylinder (SM624). Use bolts (SH708) and spring washers (SH709) to connect the handle base (SH710) and link plates (SH711). The handle base (SH710) should be about 50mm above the upper surface of battery cover (E717). Then tighten the bolts.
- 7) Connect the two control connector (H705 and E710).
- 8) Install the battery cover (E717) on the battery base (SE718). Fix it with screws (S164H). Then tighten them.
- 9) Charge the battery (See item 3.1).
- 10) Expel the air: Lift and lower the truck with load (200kg to 800kg) until no stick-slip phenomena occur.

3. BATTERY

The inspection, charging and maintenance of the battery must be carried out by authorized personnel following the manufacturer's instructions. It's forbidden to smoke or keep inflammable or spark-producing material near the truck or charger. It is forbidden to raise or lower the forks during recharging operations.

3.1 Charging

When only three pilot lamps of the battery voltametric indicator shine, charge the battery immediately.

- 1) *Preparation:* Lower the forks. Connect the charging connector on charger to the charging connector (E723). Turn the current adjusting knob to minimum position. Connect the power plug of charger to AC socket.
- 2) *Charging:* Turn on the power switch, then adjust the charging current to 7~8A. The charger will automatically charge the battery. When the charging indicator and charged indicator light up, the battery has been fully charged.
- 3) *Finish:* Turn off the power switch. Disconnect the charging connector (E723) and charging connector on charger.

3.2 Maintenance

- 1) Notice to keep the battery clean.
- 2) Keep the contact of two cable joints and battery fasteners in good condition. To prevent corrosion you can smear vaseline on the fasteners, joints and connecting parts.
- 3) If you don't use the battery for a long time, you must charge the battery every one month in order to keep the service life.
- 4) Check the electrolyte level in battery cells once monthly. Adjust the electrolyte level with distilled water. Don't add sulphuric acid or other liquids. This must be done by professional.
- 5) Never un-charge the battery completely and avoid partial recharging.

ATTENTION: TO INSURE SAFE AND EASY USE OF YOUR WESCO HIGH LIFT TRUCK, READ THESE INSTRUCTIONS ENTIRELY BEFORE USING.

4. MAINTENANCE

Item	Checks	Period		
		3 Months	6 Months	12 Months
Frame	Check load bearing elements		X	
Wheels	Check wear and tear	X		
	Ball bearings and anchorage	X		
Steering	Check play	X		
Hydraulic Installation	Check working of tubes and joints	X		
	Oil Level		X	
	Change oil (about 1 lt)			X
	Check max pressure valve			X
Electrical Installation	Check working	X		
	Connections and cables	X		
	Control button	X		
Electrical Motor	Check wear and tear of brushes		X	
Greasing	Lubricate joints	X		

Note: Use hydraulic oil according to the table below.

Temperature	Oil
-20°C ~ +40°C	L-HV46 Hydraulic oil

5. SAFETY INFORMATION

The truck has been designed for transport and lifting of loads on perfectly even floors. Electrically driven lifting quickens and facilitates repetitive changes of work heights. For safe operation of Electric High Lift Truck, please read all warning signs and instructions here and on the truck prior to use.

- 1) Do not operate the unit unless you are familiar with it and have been trained or authorized to do so.
- 2) Do not operate the unit until the condition is checked. Examine the condition of the wheels, handle assembly, frame and the lift/lower control.
- 3) Do not use the unit on sloped surfaces.
- 4) Never place any part of your body in the lifting mechanism or under the forks or load. Do not carry passengers.
- 5) Operators should wear gloves and safety shoes.
- 6) Do not handle unstable or loosely stacked loads.
- 7) Do not overload the truck.
- 8) Always place loads centrally across the forks, not at the end of forks.
- 9) The rated capacity of the unit is under the assumption of an evenly distributed load with the center of the load being halfway point of the length of the forks.
- 10) Make sure the length of the forks matches the length of the pallet.
- 11) Lower the forks to the lowest position when the unit is not in use.
- 12) Do not tow the truck when the forks are over 1 foot off the ground.
- 13) Do not use the raising/lowering button when battery is being recharged.
- 14) Steer slowly as sudden movements can result in damage or harm.
- 15) The time between first lift and the next should be about three minutes to ensure the useful life of the motor.

ATTENTION: TO INSURE SAFE AND EASY USE OF YOUR WESCO HIGH LIFT TRUCK, READ THESE INSTRUCTIONS ENTIRELY BEFORE USING.

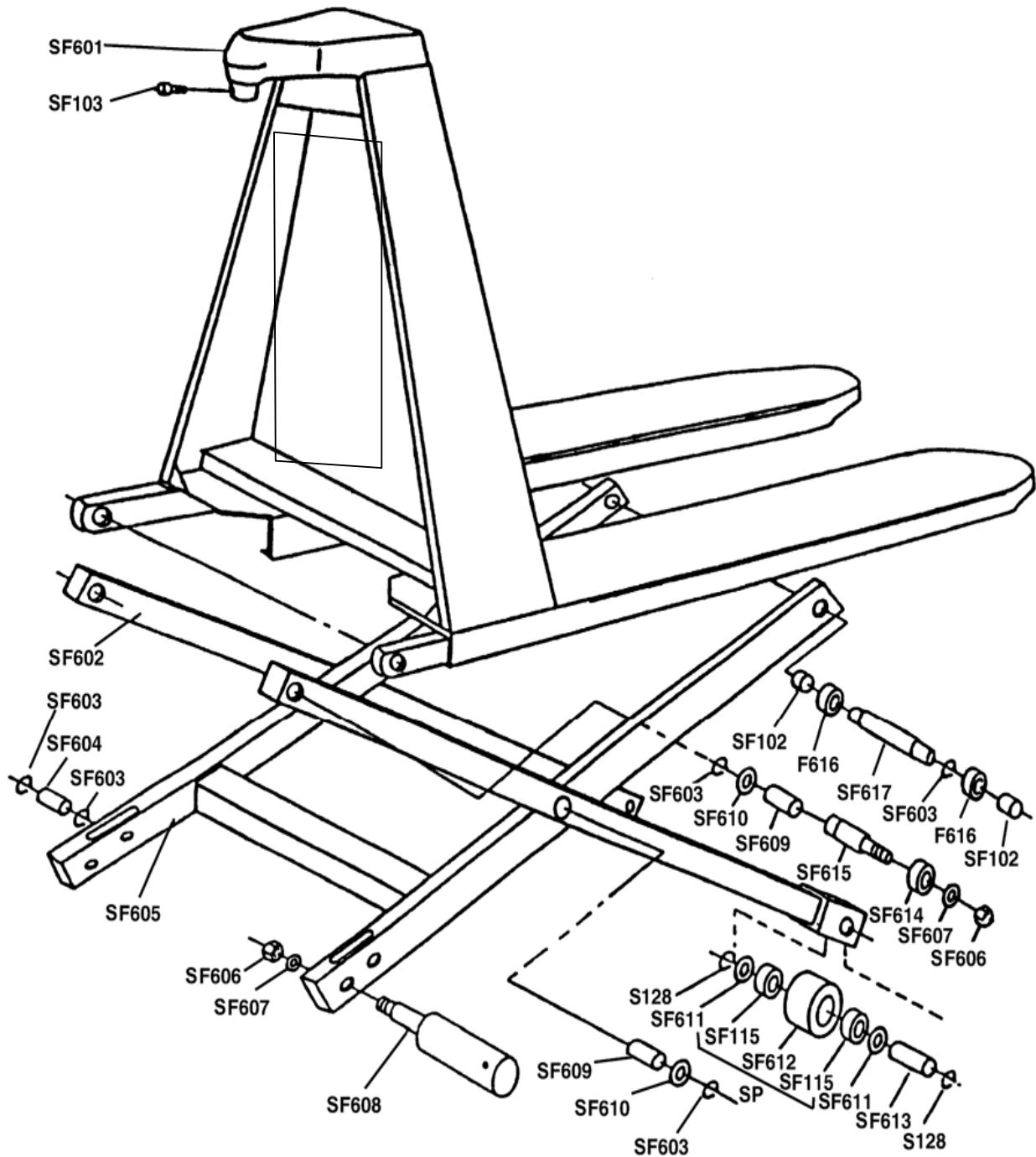
6. TROUBLE SHOOTING

No.	Problem Description	Cause	Solution
1	Forks do not lift to max height.	1. Not enough hydraulic oil.	1. Pour in more filtered oil.
2	The forks do not lift up.	1. Not enough hydraulic oil. 2. The voltage of battery isn't high enough. 3. Seals on small nut (SM611) or big nut (SM620) worn out. 4. The fuse (E712 or E715) broken. 5. Motor relay broken. 6. Motor brushes worn out. 7. Faulty solenoid valve. 8. Electric circuit broken.	1. Pour in more filtered oil. 2. Recharge the battery (item 3.2). 3. Replace seals with new ones. 4. Replace it with new one. 5. Replace it with new one. 6. Replace it with new one. 7. Check and substitute. 8. Check and repair electrical connections and control button (H712).
3	The forks do not descend.	1. The fuse (E712 or E715) is broken 2. Faulty solenoid valve. 3. Electric circuit broken.	1. Replace with new one. 2. Check and substitute. 3. Check and repair electrical connections and control button (H712).
4	Leaks	1. Seals worn out or damaged. 2. Some parts may be cracked or worn out	1. Replace seals with new seals. 2. Check and replace with new ones.
5	Stick-slip occurs.	1. Air in the hydraulic oil.	1. Expel the air while unit is loaded, see Section 2 Step 10.

ATTENTION: TO INSURE SAFE AND EASY USE OF YOUR WESCO HIGH LIFT TRUCK, READ THESE INSTRUCTIONS ENTIRELY BEFORE USING.

7. PART INFORMATION

7.1 FRAME ASSEMBLY



ATTENTION: TO INSURE SAFE AND EASY USE OF YOUR WESCO HIGH LIFT TRUCK, READ THESE INSTRUCTIONS ENTIRELY BEFORE USING.

7. PART INFORMATION

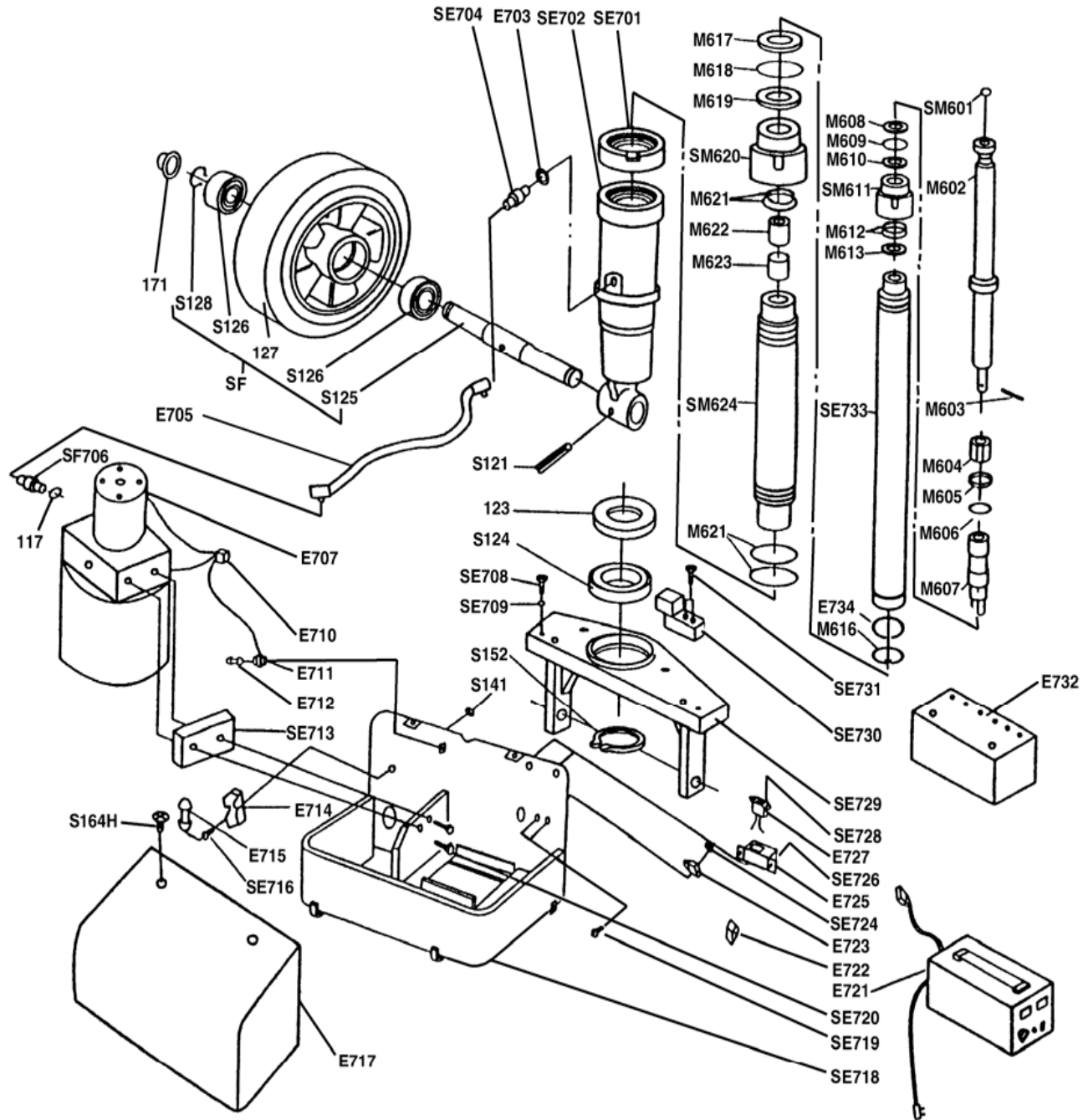
7.2 FRAME ASSEMBLY PART LIST

Item	P/N	Item Description	Qty
SF601L		Frame 316L S/S	1
SF602		External Supportive Pole	2
SF603	273802	Retaining Ring	10
SF604	273803	Shaft	2
SF605L		Internal Supportive Pole	1
SF606	273804	Nut	4
SF607	273805	Spring Washer	4
SF608	273806	Eccentric Pin	2
SF609	273807	Bushing	4
SF610	273808	Washer	4
SF611	273809	Washer	4
SF612A	273810	Load Roller	2
SF613	273811	Load Roller Axle	2
SF614	273812	Spacer	2
SF615	273813	Screw Bolt	2
F616	273814	Guide Roller	4
SF617	273815	Guide Roller Axle	2
SF102	273816	Guide Roller Bushing	4
SF103	273817	Hexagon Socket Screw	1
SF115	273818	Bearing	4
S128	273819	Retaining Ring	4

ATTENTION: TO INSURE SAFE AND EASY USE OF YOUR WESCO HIGH LIFT TRUCK, READ THESE INSTRUCTIONS ENTIRELY BEFORE USING.

7. PART INFORMATION

7.3 HYDRAULIC SYSTEM PART DRAWING



ATTENTION: TO INSURE SAFE AND EASY USE OF YOUR WESCO HIGH LIFT TRUCK, READ THESE INSTRUCTIONS ENTIRELY BEFORE USING.

7. PART INFORMATION

7.4 HYDRAULIC SYSTEM PART LIST

Item	P/N	Item Description	Qty	Item	P/N	Item Description	Qty
SE701	273876	Nut (P)	1	SM601	273820	Ball	1
SE702		Housing (P)	1	M602		Rod (P)	1
E703	273877	Red Copper Washer (S)	1	M603	273821	Pin (P)	1
SE704	273878	Cylinder Joint (P)	1	M604	273822	Guide Casing (P)	1
E705	273879	High Pressure Tube	1	M605	273823	Washer (P)	1
SE706	273880	Pump Joint	1	M606	273824	Spring Washer (P)	1
E707	273881	Power Pack	1	M607		Supportive Rod (P)	1
SE708	273882	Hexagon Head Bolt	4	M608		Dust Proof Ring (S)(P)	1
SE709	273883	Spring Washer	4	M609		O-Ring (S)(P)	1
E710	273884	Control Connector	1	M610		Seal Ring (S)(P)	1
E711	273885	Fuse Base	1	SM611	273825	Small Nut (P)	1
E712	273886	Fuse	1	M612		O-Ring (S)(P)	2
SE713	273887	Plate	1	M613	273826	Washer (P)	1
E714	273888	Fuse Base	1	M616		Retaining Ring (P)	1
E715	273889	Fuse	1	M617		Dust Proof Ring (S)(P)	1
SE716	273890	Bolt	1	M618	273827	O-Ring (S)(P)	2
E717	273891	Battery Cover	1	M619		Seal Ring (S)(P)	1
SE718		Battery Base	1	SM620		Big Nut (P)	1
SE719	273892	Screw	2	M621		O-Ring (S)(P)	4
SE720	273893	Bolt	2	M622		Spacing Pipe (P)	1
E721	273894	Charger	1	M623		Big Bushing (P)	1
E722	273895	Switch	1	SM624		External Cylinder (P)	1
E723	273896	Charging Connector	1	117	273835	O-Ring (S)(P)	1
SE724	273897	Nut	2	S121	273838	Spring Pin	1
E725	273898	Voltametric Indicator Casing	1	123	273839	Dust Cover	1
SE726	273899	Screw	2	S124	273840	Bearing	1
E727	273900	Voltametric Indicator	1	S125	273841	Steering Wheel Axle	1
SE728	273901	Screw	2	S126	273842	Bearing	4
SE729L	273902	Rhombus Plate Assembly	1	127A	273843	Steering Wheel	2
SE730	273903	Spacing Block	2	S128	273844	Retaining Ring	2
SE731	273904	Bolt	4	S141	273851	Nut	1
E732	273905	Battery	1	S152	273852	Retaining Ring	1
SE733		Internal Cylinder (P)	1	S164H	273856	Screw	2
SE734	273906	Steel Wire Retaining Ring (P)	1	171	273907	Dust Cover	2

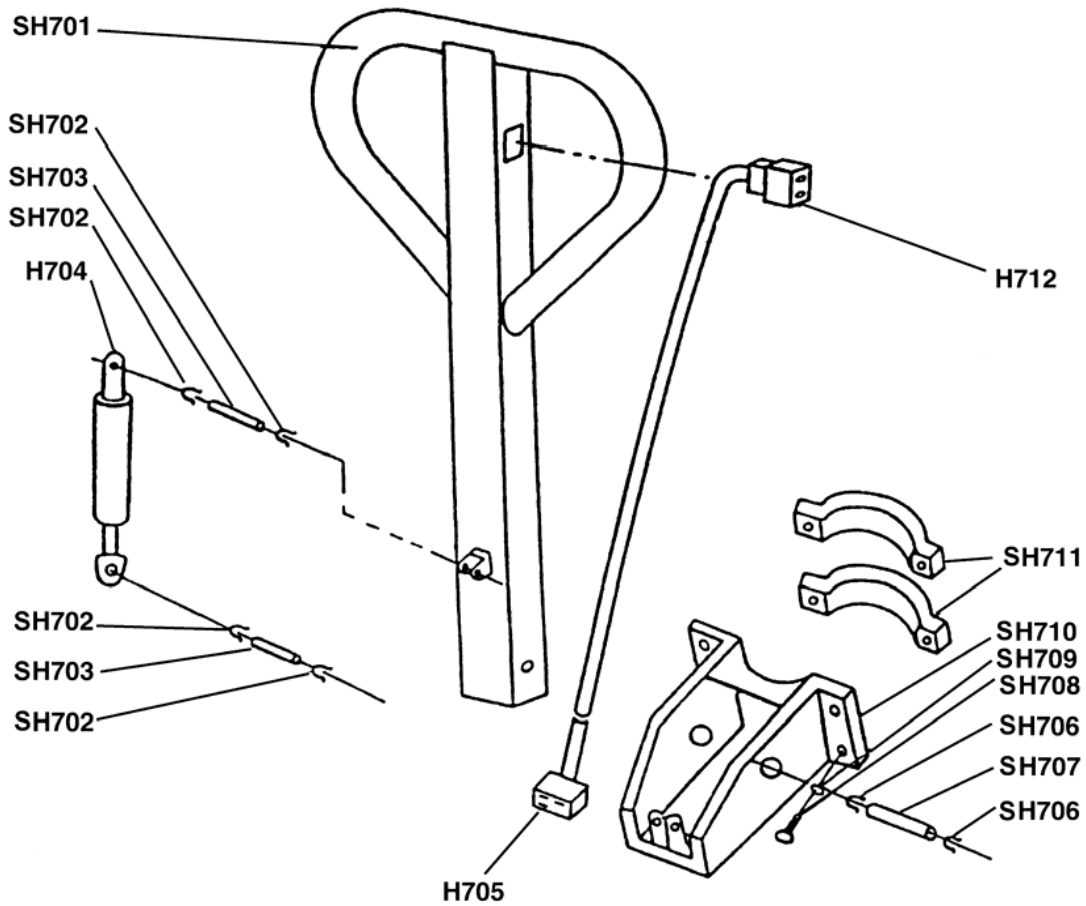
ADDITIONAL KITS OFFERED

Pump Kit	273920	Pump Kit (Includes Items listed above with P)	1
Seal Kit	273921	Seal Kit (Includes items listed above with S)	1

ATTENTION: TO INSURE SAFE AND EASY USE OF YOUR WESCO HIGH LIFT TRUCK, READ THESE INSTRUCTIONS ENTIRELY BEFORE USING.

9. PART INFORMATION

9.5 HANDLE ASSEMBLY PART DRAWING



9.6 HANDLE ASSEMBLY PART LIST

Item	P/N	Item Description	Qty
SH701	273908	Handle	1
SH702	273909	Retaining Ring	4
SH703	273910	Pin	2
H704	273911	Gas Spring	1
H705	273912	Control Connector	1
SH706	273913	Retaining Ring	2
SH707	273914	Pin	1
SH708	273915	Bolt	4
SH709	273916	Spring Washer	4
SH710	273917	Handle Base	1
SH711	273918	Link Plate	2
H712	273919	Control Button	1