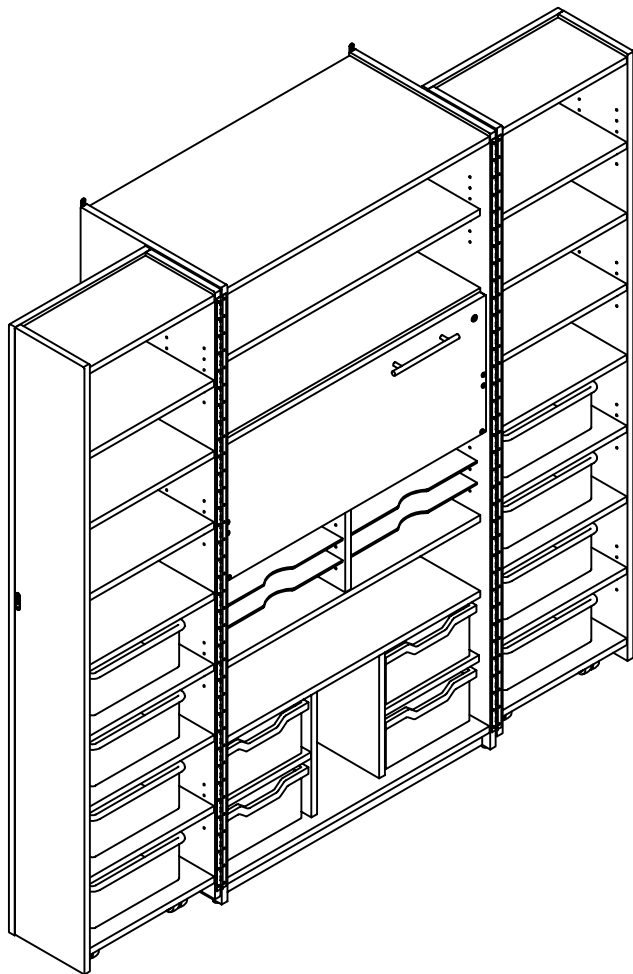
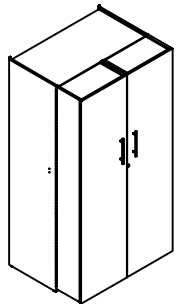


**WHITNEY BROTHERS**  
EDUCATIONAL FURNITURE FOR CHILDREN

**WB0831**

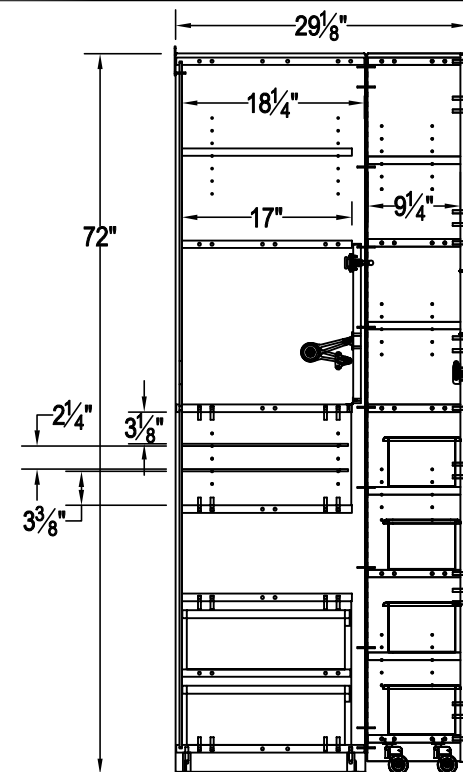
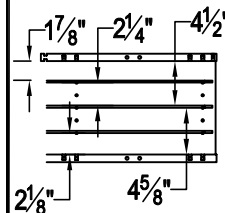
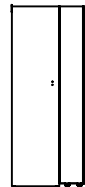
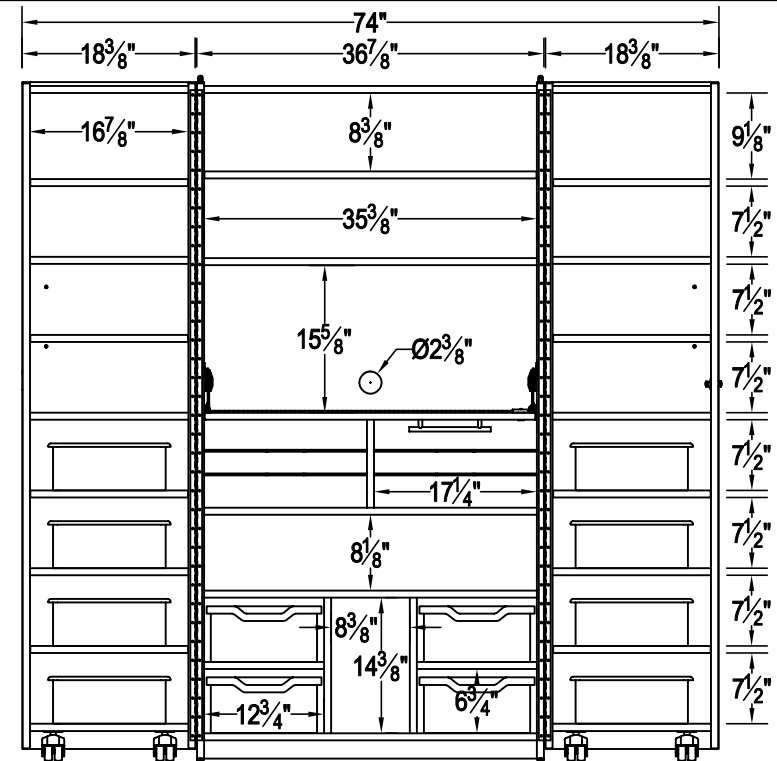
1

**TEACHERS HIDEAWAY  
ORGANIZATION STATION**



**3/4 " HARDROCK MAPLE MELAMINE  
DOWEL CONSTRUCTION  
ASSEMBLED  
NO STAMP  
GLIDES**

- (1) ADJUSTABLE SHELF (CABINET)**  
**(8) ADJUSTABLE SHELVES (DOORS)**  
**LOCKABLE INNER WORK SURFACE**  
**LOCKABLE DOORS**  
**NON LOCKING CASTERS (DOORS)**  
**(4) F2 GRATNELL TRAYS TRANSLUCENT**  
**(8) PLASTIC TRAYS TRANSLUCENT**  
**(1) 35" CONTINUOUS HINGE (COUNTER)**  
**(2) 69" CONTINUOUS HINGE (DOORS)**



**10/25/21**