



## VESTIL MANUFACTURING CORP.

2999 North Wayne Street, P.O. Box 507, Angola, IN 46703

Telephone: (260) 665-7586 -or- Toll Free (800) 348-0868

Fax: (260) 665-1339

[www.vestilmfg.com](http://www.vestilmfg.com) e-mail: [sales@vestil.com](mailto:sales@vestil.com)

# INSTRUCTION MANUAL COL-X-XX-XX



### **Receiving instructions:**

After delivery, IMMEDIATELY remove the packaging from the product in a manner that preserves the packaging and maintains the orientation of the product in the packaging; then inspect the product closely to determine whether it sustained damage during transport. **If damage is discovered during the inspection, immediately record a complete description of the damage on the bill of lading.** If the product is undamaged, discard the packaging.

### **NOTES:**

1) Compliance with laws, regulations, codes, and non-voluntary standards enforced in the location where the product is *used* is exclusively the responsibility of the owner/end-user.

2) VESTIL is **not liable** for any injury or property damage that occurs as a consequence of failing to apply either: a) the instructions in this manual; or b) information provided on labels affixed to the product. Neither is Vestil responsible for *any* consequential damages sustained as a result of failing to exercise sound judgment while assembling, installing, using or maintaining this product.

## SIGNAL WORDS

This manual uses SIGNAL WORDS to indicate the likelihood of personal injuries, as well as the probable seriousness of those injuries, if the product is misused in the ways described. Other signal words call attention to uses of the product likely cause property damage.

The signal words used appear below along with the meaning of each word:



Identifies a hazardous situation which, if not avoided, **WILL** result in **DEATH** or **SERIOUS INJURY**. Use of this signal word is limited to the most extreme situations.



Identifies a hazardous situation which, if not avoided, **COULD** result in **DEATH** or **SERIOUS INJURY**.



Indicates a hazardous situation which, if not avoided, **COULD** result in **MINOR** or **MODERATE** injury.



Identifies practices likely to result in product/property damage, such as operation that might damage the product.

Each person who assembles, installs, uses, or maintains this product should read the entire manual **and fully understand the directions in advance**. **If after reading the manual you do not understand an instruction, ask your supervisor or employer for clarification, because failure to adhere to the directions in this manual might result in serious personal injury.**

## SAFETY GUIDELINES

Vestil diligently strives to identify foreseeable hazards associated with the use of its products. However, material handling is inherently dangerous and no manual can address every conceivable risk. The end-user ultimately is responsible for exercising sound judgment at all times.



Electrocution might result if any part of the product contacts electrified wires. Reduce the likelihood of electrocution by applying **common sense**:

- DO NOT *contact* electrified wires with any part of this device, your body, or clothing.
- DO NOT use or store the product where contact with electrified wires is likely.
- Always inspect the usage area before using the product & implement precautions that account for conditions.



If this product is used improperly or carelessly, the operator and/or bystanders might sustain serious personal injuries or even be killed. To reduce the likelihood of injury:

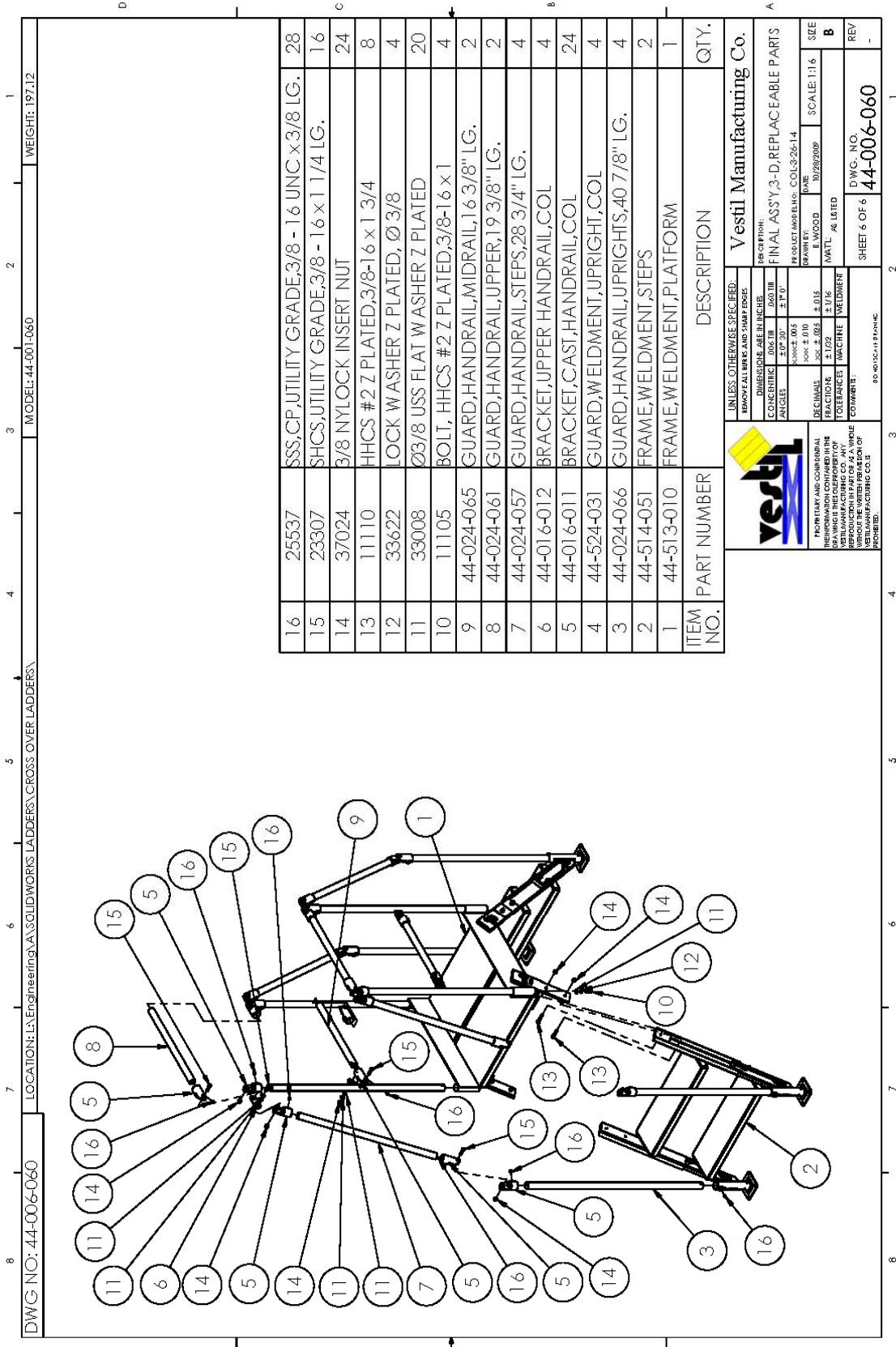
- ***Failure to read and understand the entire manual before assembling, installing, using or servicing the product is a misuse of the product.***
- Read the manual to refresh your understanding of proper use and maintenance procedures.
- DO NOT attempt to resolve any problem(s) with the product unless you are both authorized to do so and certain that it will be safe to use afterwards.
- DO NOT modify the product in any way UNLESS you first obtain written approval from Vestil. Unauthorized modifications might make the lift unsafe to use.
- DO NOT exceed the maximum rated load (see Label 287 on product).
- Inspect the product before each use.
  - A. DO NOT use this product if the inspection reveals structural damage. Examples of structural damage include, but are not limited to, the following: 1) Cracked, broken or significantly deformed load-bearing members; 2) cracked welds; 3) missing, or deformed safety chain/strap; 3) corrosion, severe wear, or other condition that affects the ability of the product to support weight or itself. Replace each part that fails to pass an inspection, and DO NOT use the product until it is fully restored to normal condition.
  - B. DO NOT use the product if any unusual noise or movement is observed. If a malfunction occurs, remove the unit from service and notify your supervisor & maintenance personnel about the issue.
- DO NOT use this device UNLESS all product labels (see "Label Placement Diagram") are readable and undamaged.




Proper use, maintenance, and storage are essential for this product to function properly.

- Always use this product in accordance with the instructions in this manual and consistent with any training relevant to machines, devices, etc. used in conjunction with this product.
- Keep the product clean & dry. Lubricate moving parts.
- FOR HYDRAULIC UNITS: Do not use brake fluid or jack oils in the hydraulic system. If oil is needed, use an anti-wear hydraulic oil with a viscosity grade of 150 SUS at 100°F, (ISO 32 cSt @ 40°C), or Dexron transmission fluid.
- Contact the manufacturer for MSDS information

# Exploded Parts Diagram and Bill of Materials



ITEM NO.	PART NUMBER	DESCRIPTION	QTY.
16	25537	SSS,CP,UTILITY GRADE,3/8 - 16 UNC,x3/8 LG.	28
15	23307	SHCS,UTILITY GRADE,3/8 - 16 x 1 1/4 LG.	16
14	37024	3/8 NYLOCK INSERT NUT	24
13	11110	HHCS #2 Z PLATED,3/8-16 x 1 3/4	8
12	33622	LOCK W ASHER Z PLATED, Ø 3/8	4
11	33008	Ø3/8 USS FLAT W ASHER Z PLATED	20
10	11105	BOLT, HHCS #2 Z PLATED,3/8-16 x 1	4
9	44-024-065	GUARD,HANDRAIL,MIDRAIL,16 3/8" LG.	2
8	44-024-061	GUARD,HANDRAIL,UPPER,19 3/8" LG.	2
7	44-024-057	GUARD,HANDRAIL,STEPS,28 3/4" LG.	4
6	44-016-012	BRACKET,UPPER HANDRAIL,COL	4
5	44-016-011	BRACKET,CAST,HANDRAIL,COL	24
4	44-524-031	GUARD,WELDMENT,UPRIGHT,COL	4
3	44-024-066	GUARD,HANDRAIL,UPRIGHTS,40 7/8" LG.	4
2	44-514-051	FRAME,WELDMENT,STEPS	2
1	44-513-010	FRAME,WELDMENT,PLATFORM	1

		<b>Vestil Manufacturing Co.</b>	
UNLESS OTHERWISE SPECIFIED: REMOVE ALL BURRS AND SHARP EDGES. DIMENSIONS ARE IN INCHES. CONCENTRIC .006 TIR .060 TIR ANGLES 5° OR 30° 5° T/O 5° T/O		DR. OPTION: FINAL ASS'Y,3-D,REPLACEABLE PARTS	
DECIMALS .005 .0025 .0015 FRACTIONS 1/32 1/64 1/128 TOLERANCES MACHINE WELDMEN		PROJECT MODEL NO. COL-326-14 DATE 10/29/2008 SCALE: 1:16	
FROM THIS AND SUBSEQUENT DRAWINGS IS THE PROPERTY OF VESTIL MANUFACTURING CO. A WHOLE REPRODUCTION IN PART OR AS A WHOLE WITHOUT THE WRITTEN PERMISSION OF VESTIL MANUFACTURING CO. IS PROHIBITED.		D.W.G. NO. <b>44-006-060</b>	
SHEET 6 OF 6		REV.	

DWG NO: 44-006-060 LOCATION: L:\Engineering\A\SOLIDWORKS LADDERS\CROSS OVER LADDERS MODEL: 44-001-060 WEIGHT: 197.12

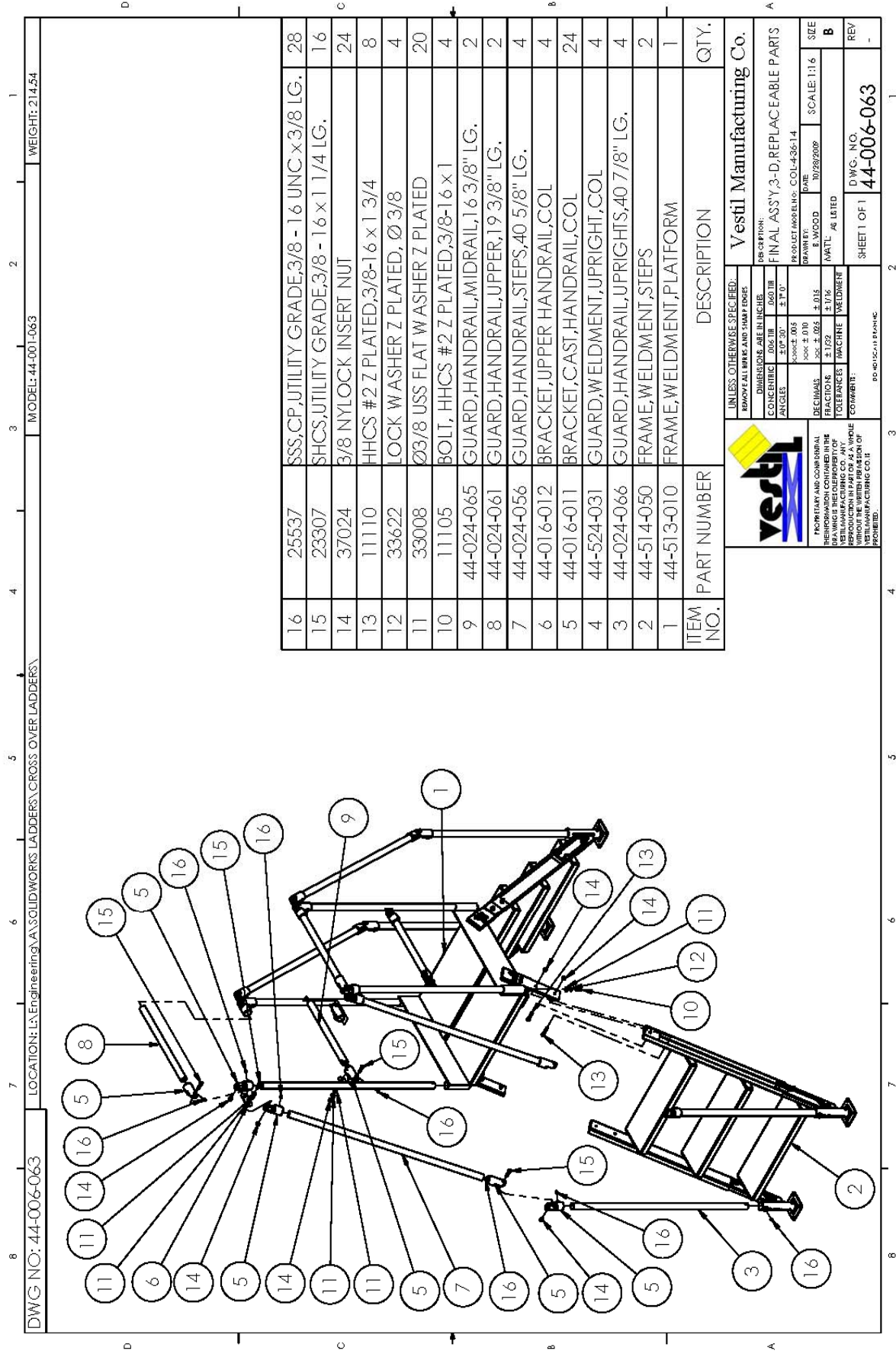
# Exploded Parts Diagram and Bill of Materials

8	7	6	5	4	3	2	1																																																																				
DWG NO: 44-006-061      LOCATION: L:\Engineering\A\SOLIDWORKS LADDERS\CROSS OVER LADDERS\      MODEL: 44-001-061      WEIGHT: 222.14																																																																											
<table border="1" style="width: 100%; border-collapse: collapse;"> <thead> <tr> <th style="width: 5%;">ITEM NO.</th> <th style="width: 15%;">PART NUMBER</th> <th style="width: 55%;">DESCRIPTION</th> <th style="width: 25%;">QTY.</th> </tr> </thead> <tbody> <tr> <td>16</td> <td>25537</td> <td>SSS,CP,UTILITY GRADE,3/8 - 16 UNC x 3/8 LG.</td> <td>28</td> </tr> <tr> <td>15</td> <td>23307</td> <td>SHCS,UTILITY GRADE,3/8 - 16 x 1 1/4 LG.</td> <td>16</td> </tr> <tr> <td>14</td> <td>37024</td> <td>3/8 NYLOCK INSERT NUT</td> <td>24</td> </tr> <tr> <td>13</td> <td>11110</td> <td>HHCS #2 Z PLATED,3/8-16 x 1 3/4</td> <td>8</td> </tr> <tr> <td>12</td> <td>33622</td> <td>LOCK WASHER Z PLATED, Ø 3/8</td> <td>4</td> </tr> <tr> <td>11</td> <td>33008</td> <td>Ø3/8 USS FLAT WASHER Z PLATED</td> <td>20</td> </tr> <tr> <td>10</td> <td>11105</td> <td>BOLT, HHCS #2 Z PLATED,3/8-16 x 1</td> <td>4</td> </tr> <tr> <td>9</td> <td>44-024-064</td> <td>GUARD,HANDRAIL,MIDRAIL,28 3/8" LG.</td> <td>2</td> </tr> <tr> <td>8</td> <td>44-024-060</td> <td>GUARD,HANDRAIL,UPPER,31 3/8" LG.</td> <td>2</td> </tr> <tr> <td>7</td> <td>44-024-057</td> <td>GUARD,HANDRAIL,STEPS,28 3/4" LG.</td> <td>4</td> </tr> <tr> <td>6</td> <td>44-016-012</td> <td>BRACKET,UPPER HANDRAIL,COL</td> <td>4</td> </tr> <tr> <td>5</td> <td>44-016-011</td> <td>BRACKET,CAST,HANDRAIL,COL</td> <td>24</td> </tr> <tr> <td>4</td> <td>44-524-031</td> <td>GUARD,WELDMENT,UPRIGHT,COL</td> <td>4</td> </tr> <tr> <td>3</td> <td>44-024-066</td> <td>GUARD,HANDRAIL,UPRIGHTS,40 7/8" LG.</td> <td>4</td> </tr> <tr> <td>2</td> <td>44-514-051</td> <td>FRAME,WELDMENT,STEPS</td> <td>2</td> </tr> <tr> <td>1</td> <td>44-513-011</td> <td>FRAME,WELDMENT,P,PLATFORM</td> <td>1</td> </tr> </tbody> </table>								ITEM NO.	PART NUMBER	DESCRIPTION	QTY.	16	25537	SSS,CP,UTILITY GRADE,3/8 - 16 UNC x 3/8 LG.	28	15	23307	SHCS,UTILITY GRADE,3/8 - 16 x 1 1/4 LG.	16	14	37024	3/8 NYLOCK INSERT NUT	24	13	11110	HHCS #2 Z PLATED,3/8-16 x 1 3/4	8	12	33622	LOCK WASHER Z PLATED, Ø 3/8	4	11	33008	Ø3/8 USS FLAT WASHER Z PLATED	20	10	11105	BOLT, HHCS #2 Z PLATED,3/8-16 x 1	4	9	44-024-064	GUARD,HANDRAIL,MIDRAIL,28 3/8" LG.	2	8	44-024-060	GUARD,HANDRAIL,UPPER,31 3/8" LG.	2	7	44-024-057	GUARD,HANDRAIL,STEPS,28 3/4" LG.	4	6	44-016-012	BRACKET,UPPER HANDRAIL,COL	4	5	44-016-011	BRACKET,CAST,HANDRAIL,COL	24	4	44-524-031	GUARD,WELDMENT,UPRIGHT,COL	4	3	44-024-066	GUARD,HANDRAIL,UPRIGHTS,40 7/8" LG.	4	2	44-514-051	FRAME,WELDMENT,STEPS	2	1	44-513-011	FRAME,WELDMENT,P,PLATFORM	1
ITEM NO.	PART NUMBER	DESCRIPTION	QTY.																																																																								
16	25537	SSS,CP,UTILITY GRADE,3/8 - 16 UNC x 3/8 LG.	28																																																																								
15	23307	SHCS,UTILITY GRADE,3/8 - 16 x 1 1/4 LG.	16																																																																								
14	37024	3/8 NYLOCK INSERT NUT	24																																																																								
13	11110	HHCS #2 Z PLATED,3/8-16 x 1 3/4	8																																																																								
12	33622	LOCK WASHER Z PLATED, Ø 3/8	4																																																																								
11	33008	Ø3/8 USS FLAT WASHER Z PLATED	20																																																																								
10	11105	BOLT, HHCS #2 Z PLATED,3/8-16 x 1	4																																																																								
9	44-024-064	GUARD,HANDRAIL,MIDRAIL,28 3/8" LG.	2																																																																								
8	44-024-060	GUARD,HANDRAIL,UPPER,31 3/8" LG.	2																																																																								
7	44-024-057	GUARD,HANDRAIL,STEPS,28 3/4" LG.	4																																																																								
6	44-016-012	BRACKET,UPPER HANDRAIL,COL	4																																																																								
5	44-016-011	BRACKET,CAST,HANDRAIL,COL	24																																																																								
4	44-524-031	GUARD,WELDMENT,UPRIGHT,COL	4																																																																								
3	44-024-066	GUARD,HANDRAIL,UPRIGHTS,40 7/8" LG.	4																																																																								
2	44-514-051	FRAME,WELDMENT,STEPS	2																																																																								
1	44-513-011	FRAME,WELDMENT,P,PLATFORM	1																																																																								
<table border="1" style="width: 100%; border-collapse: collapse;"> <tr> <td style="width: 30%; text-align: center;"> <p style="font-size: small;">                             PROPRIETARY AND CONFIDENTIAL                              INFORMATION CONTAINED IN THIS                              DRAWING IS THE PROPERTY OF                              VESTIL MANUFACTURING CO. ANY                              REPRODUCTION IN PART OR AS A WHOLE                              WITHOUT THE WRITTEN PERMISSION OF                              VESTIL MANUFACTURING CO.                              IS PROHIBITED.                         </p> </td> <td style="width: 70%;"> <p style="font-size: x-small;">                             UNLESS OTHERWISE SPECIFIED:                              DIMENSIONS ARE IN INCHES                              CONCENTRIC ±.005 THRU ±.010                              ANGLES ±.1° THRU ±.1° 01'                              HOLE DIA ±.010                              DECIMALS POS ±.025 ±.015                              FRACTIONS ±.1/32 ±.1/16                              TOLERANCES MACHINE WELDMENT                              COMMENTS:                         </p> </td> </tr> <tr> <td colspan="2" style="text-align: center;">                             DO NOT SCALE DRAWING                         </td> </tr> </table>								<p style="font-size: small;">                             PROPRIETARY AND CONFIDENTIAL                              INFORMATION CONTAINED IN THIS                              DRAWING IS THE PROPERTY OF                              VESTIL MANUFACTURING CO. ANY                              REPRODUCTION IN PART OR AS A WHOLE                              WITHOUT THE WRITTEN PERMISSION OF                              VESTIL MANUFACTURING CO.                              IS PROHIBITED.                         </p>	<p style="font-size: x-small;">                             UNLESS OTHERWISE SPECIFIED:                              DIMENSIONS ARE IN INCHES                              CONCENTRIC ±.005 THRU ±.010                              ANGLES ±.1° THRU ±.1° 01'                              HOLE DIA ±.010                              DECIMALS POS ±.025 ±.015                              FRACTIONS ±.1/32 ±.1/16                              TOLERANCES MACHINE WELDMENT                              COMMENTS:                         </p>	DO NOT SCALE DRAWING																																																																	
<p style="font-size: small;">                             PROPRIETARY AND CONFIDENTIAL                              INFORMATION CONTAINED IN THIS                              DRAWING IS THE PROPERTY OF                              VESTIL MANUFACTURING CO. ANY                              REPRODUCTION IN PART OR AS A WHOLE                              WITHOUT THE WRITTEN PERMISSION OF                              VESTIL MANUFACTURING CO.                              IS PROHIBITED.                         </p>	<p style="font-size: x-small;">                             UNLESS OTHERWISE SPECIFIED:                              DIMENSIONS ARE IN INCHES                              CONCENTRIC ±.005 THRU ±.010                              ANGLES ±.1° THRU ±.1° 01'                              HOLE DIA ±.010                              DECIMALS POS ±.025 ±.015                              FRACTIONS ±.1/32 ±.1/16                              TOLERANCES MACHINE WELDMENT                              COMMENTS:                         </p>																																																																										
DO NOT SCALE DRAWING																																																																											
<table border="1" style="width: 100%; border-collapse: collapse;"> <tr> <td style="width: 60%;">                 UNLESS OTHERWISE SPECIFIED:                  DIMENSIONS ARE IN INCHES                  CONCENTRIC ±.005 THRU ±.010                  ANGLES ±.1° THRU ±.1° 01'                  HOLE DIA ±.010                  DECIMALS POS ±.025 ±.015                  FRACTIONS ±.1/32 ±.1/16                  TOLERANCES MACHINE WELDMENT                  COMMENTS:             </td> <td style="width: 40%;">                 DESCRIPTION                  Vestil Manufacturing Co.                  DESCRIPTION:                  FINAL ASSY,3-D,REPLACEABLE PARTS                  PRODUCT MODEL NO.: COL-3-26-23                  DRAWN BY: B. WOOD      DATE: 10/28/2009                  SCALE: 1:16                  MATL: AS LISTED                  SHEET 1 OF 1                  DWG. NO. 44-006-061                  REV -             </td> </tr> </table>								UNLESS OTHERWISE SPECIFIED: DIMENSIONS ARE IN INCHES CONCENTRIC ±.005 THRU ±.010 ANGLES ±.1° THRU ±.1° 01' HOLE DIA ±.010 DECIMALS POS ±.025 ±.015 FRACTIONS ±.1/32 ±.1/16 TOLERANCES MACHINE WELDMENT COMMENTS:	DESCRIPTION Vestil Manufacturing Co. DESCRIPTION: FINAL ASSY,3-D,REPLACEABLE PARTS PRODUCT MODEL NO.: COL-3-26-23 DRAWN BY: B. WOOD      DATE: 10/28/2009 SCALE: 1:16 MATL: AS LISTED SHEET 1 OF 1 DWG. NO. 44-006-061 REV -																																																																		
UNLESS OTHERWISE SPECIFIED: DIMENSIONS ARE IN INCHES CONCENTRIC ±.005 THRU ±.010 ANGLES ±.1° THRU ±.1° 01' HOLE DIA ±.010 DECIMALS POS ±.025 ±.015 FRACTIONS ±.1/32 ±.1/16 TOLERANCES MACHINE WELDMENT COMMENTS:	DESCRIPTION Vestil Manufacturing Co. DESCRIPTION: FINAL ASSY,3-D,REPLACEABLE PARTS PRODUCT MODEL NO.: COL-3-26-23 DRAWN BY: B. WOOD      DATE: 10/28/2009 SCALE: 1:16 MATL: AS LISTED SHEET 1 OF 1 DWG. NO. 44-006-061 REV -																																																																										

# Exploded Parts Diagram and Bill of Materials

8	7	6	5	4	3	2	1																																																																							
DWG NO: 44-006-062      LOCATION: L:\Engineering\A\SOLIDWORKS LADDERS\CROSS OVER LADDERS\      MODEL: 44-001-062      WEIGHT: 247.16																																																																														
D	C	B	A																																																																											
16	25537	SSS,CP,UTILITY GRADE,3/8 - 16 UNC x 3/8 LG.					28																																																																							
15	23307	SHCS,UTILITY GRADE,3/8 - 16 x 1 1/4 LG.					16																																																																							
14	37024	3/8 NYLOCK INSERT NUT					24																																																																							
13	11110	HHCS #2 Z PLATED,3/8-16 x 1 3/4					8																																																																							
12	33622	LOCK WASHER Z PLATED, Ø 3/8					4																																																																							
11	33008	Ø3/8 USS FLAT WASHER Z PLATED					20																																																																							
10	11105	BOLT, HHCS #2 Z PLATED,3/8-16 x 1					4																																																																							
9	44-024-063	GUARD,HANDRAIL,MIDRAIL,40 3/8" LG.					2																																																																							
8	44-024-059	GUARD,HANDRAIL,UPPER,43 3/8" LG.					2																																																																							
7	44-024-057	GUARD,HANDRAIL,STEPS,28 3/4" LG.					4																																																																							
6	44-016-012	BRACKET,UPPER HANDRAIL,COL					4																																																																							
5	44-016-011	BRACKET,CAST,HANDRAIL,COL					24																																																																							
4	44-524-031	GUARD,WELDMENT,UPRIGHT,COL					4																																																																							
3	44-024-066	GUARD,HANDRAIL,UPRIGHTS,40 7/8" LG.					4																																																																							
2	44-514-051	FRAME,WELDMENT,STEPS					2																																																																							
1	44-513-012	FRAME,WELDMENT,P,PLATFORM					1																																																																							
ITEM NO.	PART NUMBER	DESCRIPTION					QTY.																																																																							
<table border="1" style="width: 100%; border-collapse: collapse;"> <tr> <td colspan="2" style="text-align: center;">UNLESS OTHERWISE SPECIFIED: REMOVE ALL DIMS AND DIM LINE DIMS</td> <td colspan="2" style="text-align: center;">DIMENSIONS ARE IN INCHES</td> <td colspan="2" style="text-align: center;">DIMENSIONS ARE IN MILLIMETERS</td> <td colspan="2" style="text-align: center;">DRAWN BY: B. WOOD</td> <td colspan="2" style="text-align: center;">DATE: 10/28/2009</td> <td colspan="2" style="text-align: center;">SCALE: 1:16</td> </tr> <tr> <td style="text-align: center;">CONCENTRIC</td> <td style="text-align: center;">± .005</td> <td style="text-align: center;">HOLE DIA</td> <td style="text-align: center;">± .010</td> <td style="text-align: center;">HOLE DIA</td> <td style="text-align: center;">± .015</td> <td style="text-align: center;">FRAC</td> <td style="text-align: center;">± .005</td> <td style="text-align: center;">FRAC</td> <td style="text-align: center;">± .016</td> <td style="text-align: center;">MATERIAL</td> <td style="text-align: center;">AS LISTED</td> </tr> <tr> <td style="text-align: center;">ANGLES</td> <td style="text-align: center;">± .1°</td> <td style="text-align: center;">TOLERANCES</td> <td style="text-align: center;">MACHINE</td> <td style="text-align: center;">WELDMENT</td> <td colspan="6"></td> </tr> <tr> <td colspan="12" style="text-align: center;">                 PROPRIETARY AND CONFIDENTIAL INFORMATION CONTAINED IN THIS DRAWING IS THE PROPERTY OF VESTIL MANUFACTURING CO. ANY REPRODUCTION IN PART OR AS A WHOLE WITHOUT THE WRITTEN PERMISSION OF VESTIL MANUFACTURING CO. IS PROHIBITED.             </td> </tr> <tr> <td colspan="6" style="text-align: center;"> </td> <td colspan="6" style="text-align: center;">                 DO NOT SCALE DRAWING             </td> </tr> <tr> <td colspan="6" style="text-align: center;">                 Vestil Manufacturing Co.             </td> <td colspan="6" style="text-align: center;">                 DESCRIPTION: FINAL ASSY,3-D,REPLACEABLE PARTS                  PRODUCT MODEL NO.: COL-3-26-33                  SHEET 1 OF 1      DWG. NO. 44-006-062             </td> </tr> </table>								UNLESS OTHERWISE SPECIFIED: REMOVE ALL DIMS AND DIM LINE DIMS		DIMENSIONS ARE IN INCHES		DIMENSIONS ARE IN MILLIMETERS		DRAWN BY: B. WOOD		DATE: 10/28/2009		SCALE: 1:16		CONCENTRIC	± .005	HOLE DIA	± .010	HOLE DIA	± .015	FRAC	± .005	FRAC	± .016	MATERIAL	AS LISTED	ANGLES	± .1°	TOLERANCES	MACHINE	WELDMENT							PROPRIETARY AND CONFIDENTIAL INFORMATION CONTAINED IN THIS DRAWING IS THE PROPERTY OF VESTIL MANUFACTURING CO. ANY REPRODUCTION IN PART OR AS A WHOLE WITHOUT THE WRITTEN PERMISSION OF VESTIL MANUFACTURING CO. IS PROHIBITED.																		DO NOT SCALE DRAWING						Vestil Manufacturing Co.						DESCRIPTION: FINAL ASSY,3-D,REPLACEABLE PARTS PRODUCT MODEL NO.: COL-3-26-33 SHEET 1 OF 1      DWG. NO. 44-006-062					
UNLESS OTHERWISE SPECIFIED: REMOVE ALL DIMS AND DIM LINE DIMS		DIMENSIONS ARE IN INCHES		DIMENSIONS ARE IN MILLIMETERS		DRAWN BY: B. WOOD		DATE: 10/28/2009		SCALE: 1:16																																																																				
CONCENTRIC	± .005	HOLE DIA	± .010	HOLE DIA	± .015	FRAC	± .005	FRAC	± .016	MATERIAL	AS LISTED																																																																			
ANGLES	± .1°	TOLERANCES	MACHINE	WELDMENT																																																																										
PROPRIETARY AND CONFIDENTIAL INFORMATION CONTAINED IN THIS DRAWING IS THE PROPERTY OF VESTIL MANUFACTURING CO. ANY REPRODUCTION IN PART OR AS A WHOLE WITHOUT THE WRITTEN PERMISSION OF VESTIL MANUFACTURING CO. IS PROHIBITED.																																																																														
						DO NOT SCALE DRAWING																																																																								
Vestil Manufacturing Co.						DESCRIPTION: FINAL ASSY,3-D,REPLACEABLE PARTS PRODUCT MODEL NO.: COL-3-26-33 SHEET 1 OF 1      DWG. NO. 44-006-062																																																																								
D	C	B	A	8	7	6	5	4	3	2	1																																																																			

# Exploded Parts Diagram and Bill of Materials



DWG NO: 44-006-063	LOCATION: L:\Engineering\A\SOLIDWORKS LADDERS\CROSS OVER LADDERS\	MODEL: 44-001-063	WEIGHT: 214.54
--------------------	---	-------------------	----------------

ITEM NO.	PART NUMBER	DESCRIPTION	QTY.
16	25537	SSS,CP,UTILITY GRADE,3/8 - 16 UNC x 3/8 LG.	28
15	23307	SHCS,UTILITY GRADE,3/8 - 16 x 1 1/4 LG.	16
14	37024	3/8 NYLOCK INSERT NUT	24
13	11110	HHCS #2 Z PLATED,3/8-16 x 1 3/4	8
12	33622	LOCK WASHER Z PLATED, Ø 3/8	4
11	33008	Ø3/8 USS FLAT WASHER Z PLATED	20
10	11105	BOLT, HHCS #2 Z PLATED,3/8-16 x 1	4
9	44-024-065	GUARD,HANDRAIL,MIDRAIL,16 3/8" LG.	2
8	44-024-061	GUARD,HANDRAIL,UPPER,19 3/8" LG.	2
7	44-024-056	GUARD,HANDRAIL,STEPS,40 5/8" LG.	4
6	44-016-012	BRACKET,UPPER HANDRAIL,COL	4
5	44-016-011	BRACKET,CAST,HANDRAIL,COL	24
4	44-524-031	GUARD,WELDMENT,UPRIGHT,COL	4
3	44-024-066	GUARD,HANDRAIL,UPRIGHTS,40 7/8" LG.	4
2	44-514-050	FRAME,WELDMENT,STEPS	2
1	44-513-010	FRAME,WELDMENT,P,PLATFORM	1

**UNLESS OTHERWISE SPECIFIED:**

REMOVE ALL DIMS AND DIM LINE

DIMENSIONS ARE IN INCHES

CONCENTRIC	± 0.005	± 0.010
ANGLES	± 10° 30'	± 1° 0'

DECIMALS: ± 0.015

FRACTIONS: ± 1/32

TOLERANCES: ± 0.005

WELDMENT: ± 1/16

COMPOSITE: ± 0.005

ISO 10: IS-C-11 87-11-11

**vestil**

PROPRIETARY AND CONFIDENTIAL  
INFORMATION CONTAINED IN THIS  
DRAWING IS THE PROPERTY OF  
VESTIL MANUFACTURING CO. ANY  
REPRODUCTION IN PART OR AS A WHOLE  
WITHOUT THE WRITTEN PERMISSION OF  
VESTIL MANUFACTURING CO. IS  
PROHIBITED.

DESCRIPTION: Vestil Manufacturing Co.

DESCRIPTION: FINAL ASSY,3-D,REPLACEABLE PARTS

PRODUCT MODEL NO.: COL-436-14

DATE: 10/28/2009

SCALE: 1:16

REV: B

DWG. NO. 44-006-063

SHEET 1 OF 1

# Exploded Parts Diagram and Bill of Materials

8	7	6	5	4	3	2	1
DWG NO: 44-006-064      LOCATION: L:\Engineering\A\SOLIDWORKS LADDERS\CROSS OVER LADDERS\      MODEL: 44-001-064      WEIGHT: 239.57							
8	7	6	5	4	3	2	1

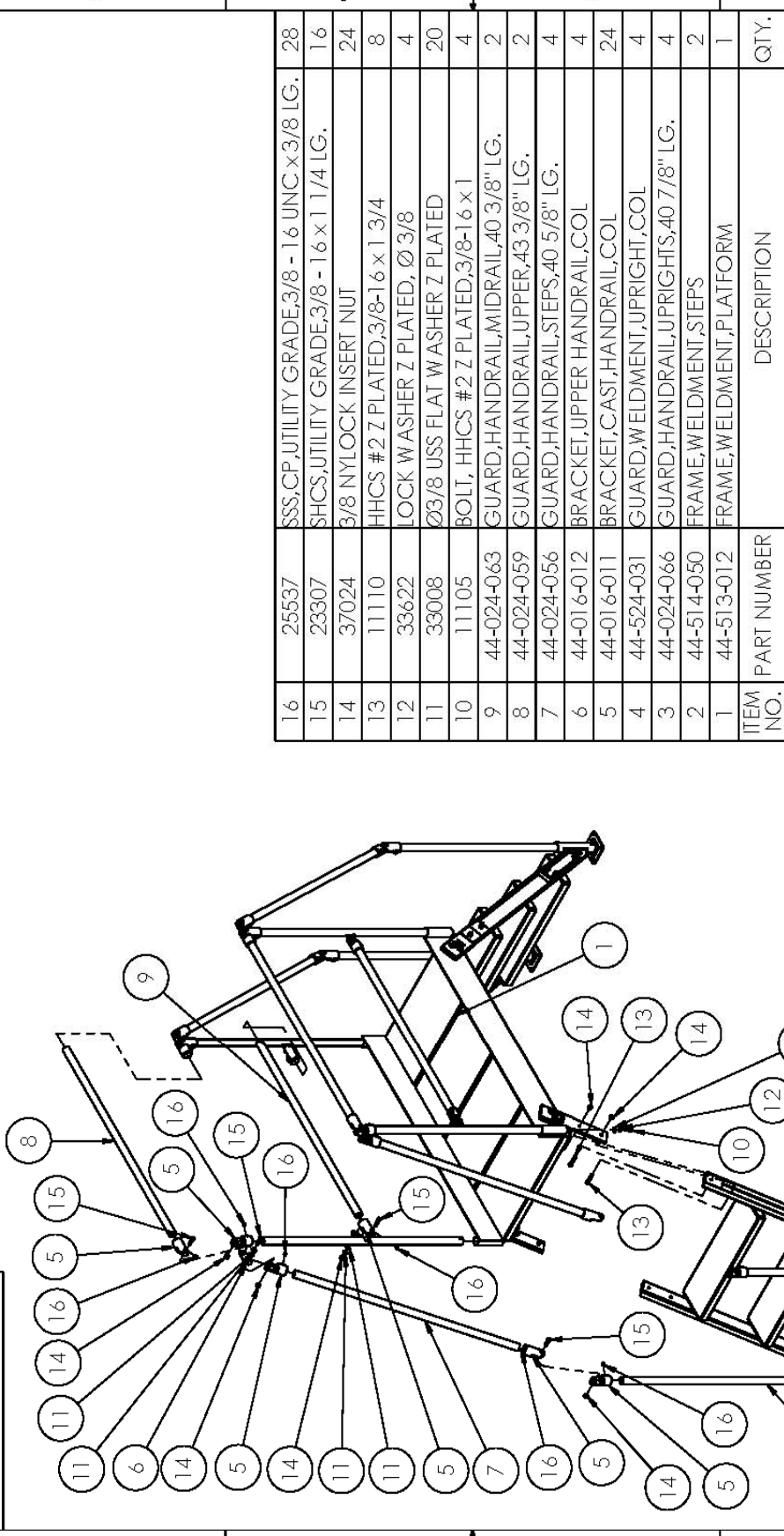
ITEM NO.	PART NUMBER	DESCRIPTION	QTY.
16	25537	SSS,CP,UTILITY GRADE,3/8 - 16 UNC x 3/8 LG.	28
15	23307	SHCS,UTILITY GRADE,3/8 - 16 x 1 1/4 LG.	16
14	37024	3/8 NYLOCK INSERT NUT	24
13	11110	HHCS #2 Z PLATED,3/8-16 x 1 3/4	8
12	33622	LOCK WASHER Z PLATED, Ø 3/8	4
11	33008	Ø3/8 USS FLAT WASHER Z PLATED	20
10	11105	BOLT, HHCS #2 Z PLATED,3/8-16 x 1	4
9	44-024-064	GUARD,HANDRAIL,MIDRAIL,28 3/8" LG.	2
8	44-024-060	GUARD,HANDRAIL,UPPER,31 3/8" LG.	2
7	44-024-056	GUARD,HANDRAIL,STEPS,40 5/8" LG.	4
6	44-016-012	BRACKET,UPPER HANDRAIL,COL	4
5	44-016-011	BRACKET,CAST,HANDRAIL,COL	24
4	44-524-031	GUARD,WELDMENT,UPRIGHT,COL	4
3	44-024-066	GUARD,HANDRAIL,UPRIGHTS,40 7/8" LG.	4
2	44-514-050	FRAME,WELDMENT,STEPS	2
1	44-513-011	FRAME,WELDMENT,P,PLATFORM	1

<p style="font-size: small;">                 PROPRIETARY AND CONFIDENTIAL                  INFORMATION CONTAINED IN THIS                  DRAWING IS THE PROPERTY OF                  VESTIL MANUFACTURING CO. ANY                  REPRODUCTION IN PART OR AS A WHOLE                  WITHOUT THE WRITTEN PERMISSION OF                  VESTIL MANUFACTURING CO. IS                  PROHIBITED.             </p>	UNLESS OTHERWISE SPECIFIED: DIMENSIONS ARE IN INCHES CONCENTRIC ±.002 TIR ±.010 TIR ANGLES ±.1° ±.1° SURFACE FINISH DECIMALS .005 ±.010 FRACTIONS .005 ±.025 ±.1/16 TOLERANCES (MACHINE WELDMENT) FINISH: AS LISTED	DO NOT SCALE DRAWING SCALE: 1:16 DATE: 10/28/2009 DRAWN BY: B. WOOD CHECKED BY: J. WOOD MATERIAL: AS LISTED
VESTIL MANUFACTURING CO. DESCRIPTION: FINAL ASSY,3-D,REPLACEABLE PARTS PRODUCT MODEL NO.: COL-436-23 DRAWING NO.: 44-001-064		
SHEET 1 OF 1      DWG. NO. 44-006-064		

# Exploded Parts Diagram and Bill of Materials

DWG NO: 44-006-065 LOCATION: L:\Engineering\A\SOLIDWORKS LADDERS\CROSS OVER LADDERS\ MODEL: 44-001-065 WEIGHT: 264.59



ITEM NO.	PART NUMBER	DESCRIPTION	QTY.
16	25537	SSS,CP,UTILITY GRADE,3/8 - 16 UNC x 3/8 LG.	28
15	23307	SHCS,UTILITY GRADE,3/8 - 16 x 1 1/4 LG.	16
14	37024	3/8 NYLOCK INSERT NUT	24
13	11110	HHCS #2 Z PLATED,3/8-16 x 1 3/4	8
12	33622	LOCK WASHER Z PLATED, Ø 3/8	4
11	33008	Ø3/8 USS FLAT WASHER Z PLATED	20
10	11105	BOLT, HHCS #2 Z PLATED,3/8-16 x 1	4
9	44-024-063	GUARD,HANDRAIL,MIDRAIL,40 3/8" LG.	2
8	44-024-059	GUARD,HANDRAIL,UPPER,43 3/8" LG.	2
7	44-024-056	GUARD,HANDRAIL,STEPS,40 5/8" LG.	4
6	44-016-012	BRACKET,UPPER HANDRAIL,COL	4
5	44-016-011	BRACKET,CAST,HANDRAIL,COL	24
4	44-524-031	GUARD,WELDMENT,UPRIGHT,COL	4
3	44-024-066	GUARD,HANDRAIL,UPRIGHTS,40 7/8" LG.	4
2	44-514-050	FRAME,WELDMENT,STEPS	2
1	44-513-012	FRAME,WELDMENT,P,PLATFORM	1

**UNLESS OTHERWISE SPECIFIED:**

REMOVE ALL DIMS AND DIM LINE	REMOVE ALL DIMS AND DIM LINE
DIMENSIONS ARE IN INCHES	DIMENSIONS ARE IN INCHES
CONCENTRIC ±.002 TB ±.010 TB	CONCENTRIC ±.002 TB ±.010 TB
ANGLES ±.1°	ANGLES ±.1°
ROUNDS .005	ROUNDS .005
DECIMALS .000 ± 0.01	DECIMALS .000 ± 0.01
FRACTIONS .000 ± .005	FRACTIONS .000 ± .005
TOLERANCES ±.002	TOLERANCES ±.002
WELDMENTS	WELDMENTS
COMMENTS:	COMMENTS:

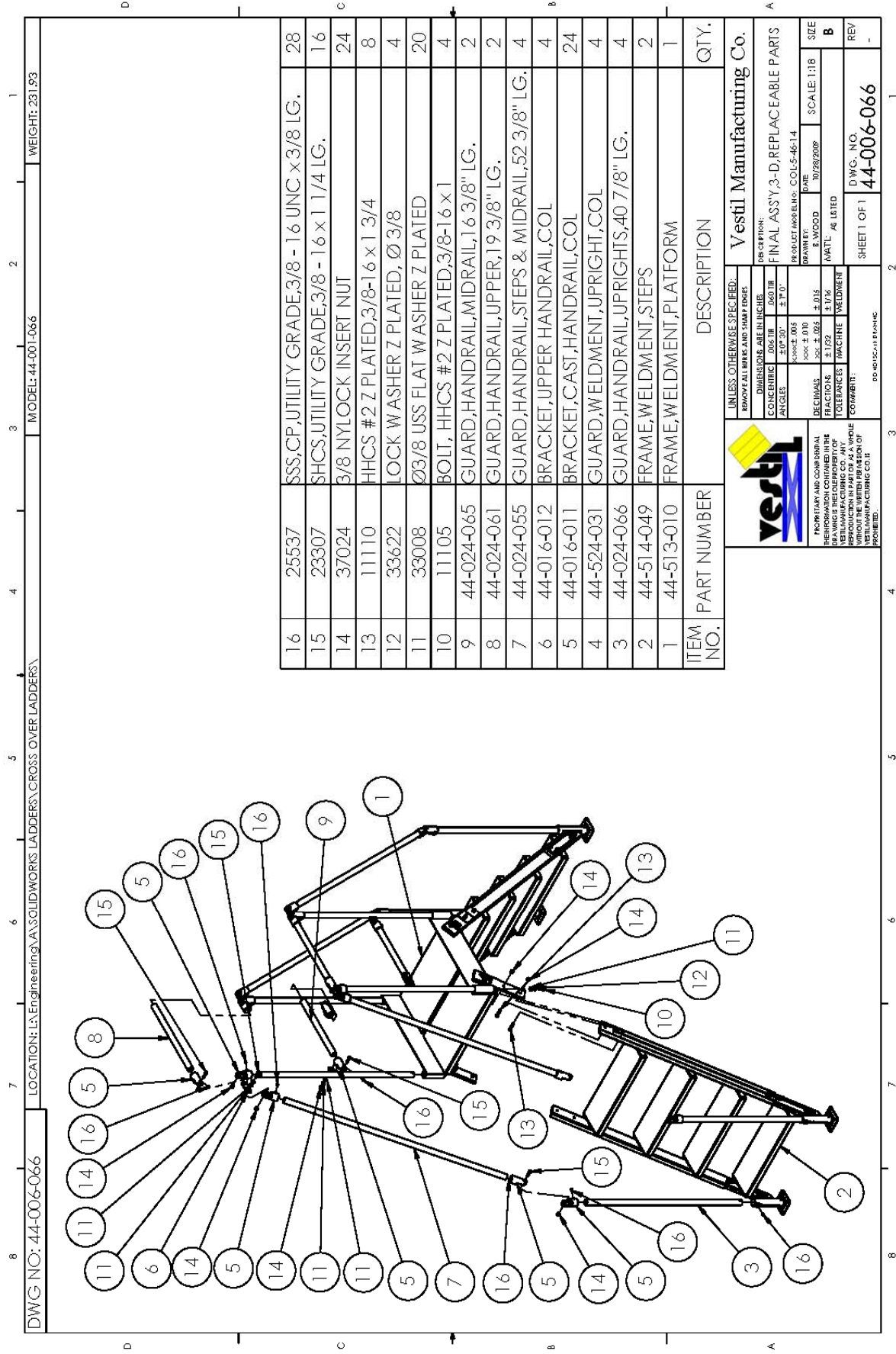
DO NOT SCALE DRAWING

**vestil**  
 PROPRIETARY AND CONFIDENTIAL  
 INFORMATION CONTAINED IN THIS  
 DRAWING IS THE PROPERTY OF  
 VESTIL MANUFACTURING CO. ANY  
 REPRODUCTION IN PART OR AS A WHOLE  
 WITHOUT THE WRITTEN PERMISSION OF  
 VESTIL MANUFACTURING CO. IS  
 PROHIBITED.

DESCRIPTION: Vestil Manufacturing Co.  
 DESCRIPTION: FINAL ASSY,3-D,REPLACEABLE PARTS  
 PRODUCT MODEL NO.: COL-436-33  
 DRAWN BY: B. WOOD  
 DATE: 10/28/2009  
 SCALE: 1:16  
 MAT'L: AS LISTED  
 SHEET 1 OF 1  
 DWG. NO. 44-006-065




# Exploded Parts Diagram and Bill of Materials



DWG NO: 44-006-066      LOCATION: L:\Engineering\A\SOLIDWORKS LADDERS\CROSS OVER LADDERS\      MODEL: 44-001-066      WEIGHT: 231.93

ITEM NO.	PART NUMBER	DESCRIPTION	QTY.
16	25537	SSS,CP,UTILITY GRADE,3/8 - 16 UNC.x3/8 LG.	28
15	23307	SHCS,UTILITY GRADE,3/8 - 16 x 1 1/4 LG.	16
14	37024	3/8 NYLOCK INSERT NUT	24
13	11110	HHCS #2 Z PLATED,3/8-16 x 1 3/4	8
12	33622	LOCK WASHER Z PLATED, Ø 3/8	4
11	33008	Ø3/8 USS FLAT WASHER Z PLATED	20
10	11105	BOLT, HHCS #2 Z PLATED,3/8-16 x 1	4
9	44-024-065	GUARD,HANDRAIL,MIDRAIL,16 3/8" LG.	2
8	44-024-061	GUARD,HANDRAIL,UPPER,19 3/8" LG.	2
7	44-024-055	GUARD,HANDRAIL,STEPS & MIDRAIL,52 3/8" LG.	4
6	44-016-012	BRACKET,UPPER HANDRAIL,COL	4
5	44-016-011	BRACKET,CAST,HANDRAIL,COL	24
4	44-524-031	GUARD,WELDMENT,UPRIGHT,COL	4
3	44-024-066	GUARD,HANDRAIL,UPRIGHTS,40 7/8" LG.	4
2	44-514-049	FRAME,WELDMENT,STEPS	2
1	44-513-010	FRAME,WELDMENT,PLATFORM	1



PROPRIETARY AND CONFIDENTIAL  
 INFORMATION CONTAINED IN THIS  
 DRAWING IS THE PROPERTY OF  
 VESTIL MANUFACTURING CO. ANY  
 REPRODUCTION IN PART OR AS A WHOLE  
 WITHOUT THE WRITTEN PERMISSION OF  
 VESTIL MANUFACTURING CO. IS  
 PROHIBITED.

**UNLESS OTHERWISE SPECIFIED:**

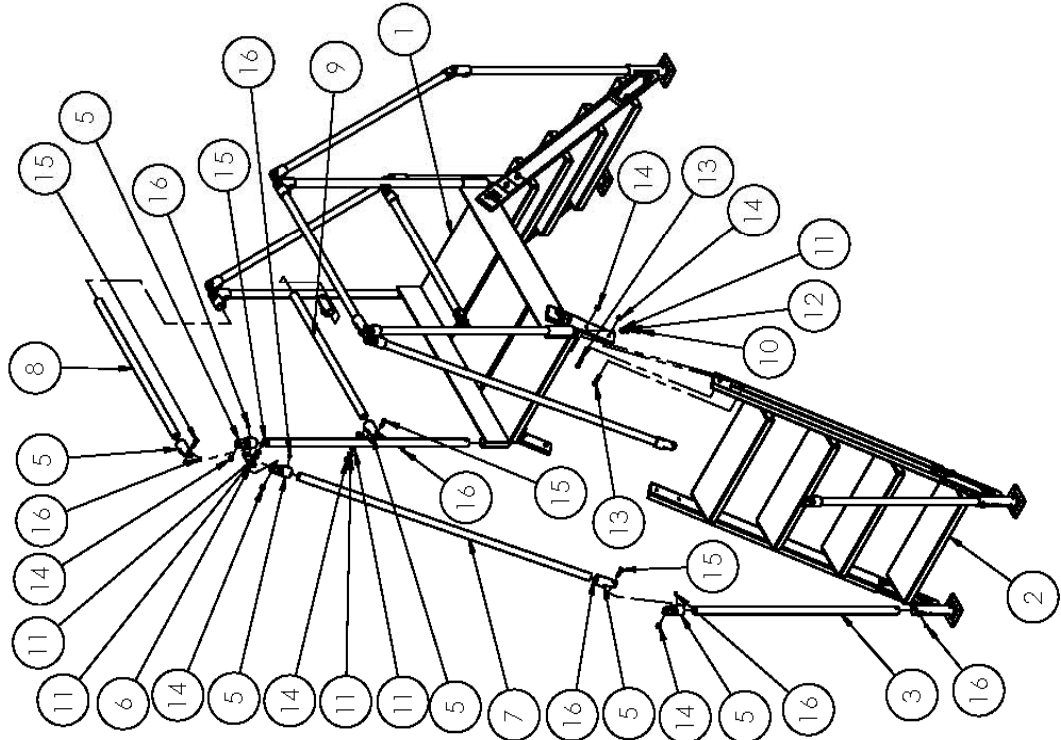
REMOVE ALL DIMS AND SHARP EDGES	DIAMETERS ARE IN INCHES	FINISH	SCALE: 1:18
CONCENTRIC ±.002 IN	±.001 IN	AS SHOWN	
ANGLES ±.1°	±.1°		
ROUNDS ±.005	±.015		
DECIMALS ±.010	±.025		
FRACTIONS ±.1/32	±.1/16		
TOLERANCES	WELDMENT		
COMMENTS:			

DRAWING: FINAL ASSY 3-D, REPLACEABLE PARTS  
 PRODUCT MODEL NO.: COL-5-46-14  
 DRAWN BY: B. WOOD      DATE: 10/28/2009  
 MATL: AS LISTED

DESCRIPTION: Vestil Manufacturing Co.

SHEET 1 OF 1      DWG. NO. 44-006-066


# Exploded Parts Diagram and Bill of Materials

8	7	6	5	4	3	2	1	
DWG NO: 44-00-067			LOCATION: L:\Engineering\A\SOLIDWORKS LADDERS\CROSS OVER LADDERS\			MODEL: 44-001-067		WEIGHT: 256.95
								
D	C	B	A					

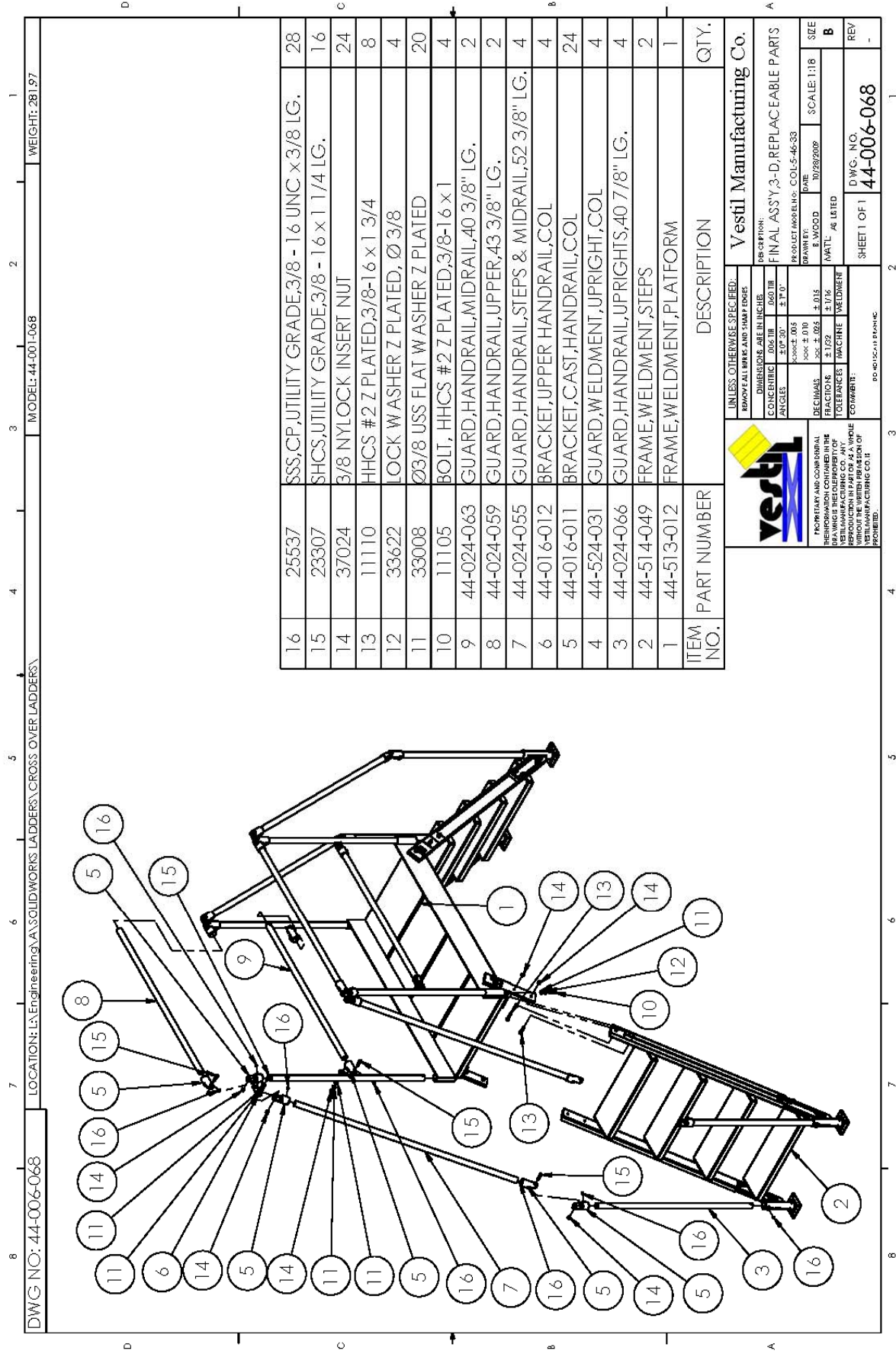
  

ITEM NO.	PART NUMBER	DESCRIPTION	QTY.
16	25537	SSS,CP,UTILITY GRADE,3/8 - 16 UNC.x3/8 LG.	28
15	23307	SHCS,UTILITY GRADE,3/8 - 16 x 1 1/4 LG.	16
14	37024	3/8 NYLOCK INSERT NUT	24
13	11110	HHCS #2 Z PLATED,3/8-16 x 1 3/4	8
12	33622	LOCK WASHER Z PLATED, Ø 3/8	4
11	33008	Ø3/8 USS FLAT WASHER Z PLATED	20
10	11105	BOLT, HHCS #2 Z PLATED,3/8-16 x 1	4
9	44-024-064	GUARD,HANDRAIL,MIDRAIL,28 3/8" LG.	2
8	44-024-060	GUARD,HANDRAIL,UPPER,31 3/8" LG.	2
7	44-024-055	GUARD,HANDRAIL,STEPS & MIDRAIL,52 3/8" LG.	4
6	44-016-012	BRACKET,UPPER HANDRAIL,COL	4
5	44-016-011	BRACKET,CAST,HANDRAIL,COL	24
4	44-524-031	GUARD,WELDMENT,UPRIGHT,COL	4
3	44-024-066	GUARD,HANDRAIL,UPRIGHTS,40 7/8" LG.	4
2	44-514-049	FRAME,WELDMENT,STEPS	2
1	44-513-011	FRAME,WELDMENT,PLATFORM	1


 <p style="font-size: 8px;">                 PROPRIETARY AND CONFIDENTIAL                  INFORMATION CONTAINED IN THIS                  DRAWING IS THE PROPERTY OF                  VESTIL MANUFACTURING CO. ANY                  REPRODUCTION IN PART OR AS A WHOLE                  WITHOUT THE WRITTEN PERMISSION OF                  VESTIL MANUFACTURING CO. IS                  PROHIBITED.             </p>	UNLESS OTHERWISE SPECIFIED: DIMENSIONS ARE IN INCHES CONCENTRIC ±.002 IN. ±.001 IN. ANGLES ±.1° SURFACE FINISH DECIMALS .005 ±.010 FRACTIONS .005 ±.025 ±.1/16 TOLERANCES (MACHINE WELDMENT) FINISH: AS LISTED	DESCRIPTION: Vestil Manufacturing Co. DESCRIPTION: FINAL ASSY 3-D, REPLACEABLE PARTS PRODUCT MODEL NO.: COL-5-46-23 DRAWN BY: B. WOOD DATE: 10/28/2009 SCALE: 1:18 SHEET 1 OF 1 DWG. NO. 44-006-067
---	--	---

# Exploded Parts Diagram and Bill of Materials



DWG NO: 44-006-068      LOCATION: L:\Engineering\A\SOLIDWORKS LADDERS\CROSS OVER LADDERS\      MODEL: 44-001-068      WEIGHT: 281.97

ITEM NO.	PART NUMBER	DESCRIPTION	QTY.
16	25537	SSS,CP,UTILITY GRADE,3/8 - 16 UNC.x3/8 LG.	28
15	23307	SHCS,UTILITY GRADE,3/8 - 16 x 1 1/4 LG.	16
14	37024	3/8 NYLOCK INSERT NUT	24
13	11110	HHCS #2 Z PLATED,3/8-16 x 1 3/4	8
12	33622	LOCK WASHER Z PLATED, Ø 3/8	4
11	33008	Ø3/8 USS FLAT WASHER Z PLATED	20
10	11105	BOLT, HHCS #2 Z PLATED,3/8-16 x 1	4
9	44-024-063	GUARD,HANDRAIL,MIDRAIL,40 3/8" LG.	2
8	44-024-059	GUARD,HANDRAIL,UPPER,43 3/8" LG.	2
7	44-024-055	GUARD,HANDRAIL,STEPS & MIDRAIL,52 3/8" LG.	4
6	44-016-012	BRACKET,UPPER HANDRAIL,COL	4
5	44-016-011	BRACKET,CAST,HANDRAIL,COL	24
4	44-524-031	GUARD,WELDMENT,UPRIGHT,COL	4
3	44-024-066	GUARD,HANDRAIL,UPRIGHTS,40 7/8" LG.	4
2	44-514-049	FRAME,WELDMENT,STEPS	2
1	44-513-012	FRAME,WELDMENT,PLATFORM	1



PROPRIETARY AND CONFIDENTIAL  
 INFORMATION CONTAINED IN THIS  
 DRAWING IS THE PROPERTY OF  
 VESTIL MANUFACTURING CO. ANY  
 REPRODUCTION IN PART OR AS A WHOLE  
 WITHOUT THE WRITTEN PERMISSION OF  
 VESTIL MANUFACTURING CO. IS  
 PROHIBITED.

**UNLESS OTHERWISE SPECIFIED:**

DIMENSIONS ARE IN INCHES	
CONCENTRIC	± 0.0075
PERPENDICULARITY	± 0.0075
ANGLES	± 1° 0'
SURFACE FINISH	
DECIMALS	± 0.015
FRACTIONS	± 0.025
TOLERANCES	± 0.016
WELDMENTS	WELDMENT
COMMENTS:	

DO NOT SCALE DRAWING

**DESCRIPTION:** Vestil Manufacturing Co.

**DESCRIPTION:** FINAL ASSY,3-D,REPLACEABLE PARTS

**PRODUCT MODEL NO.:** COL-5-46-33

**DRAWN BY:** B. WOOD      **DATE:** 10/28/2009

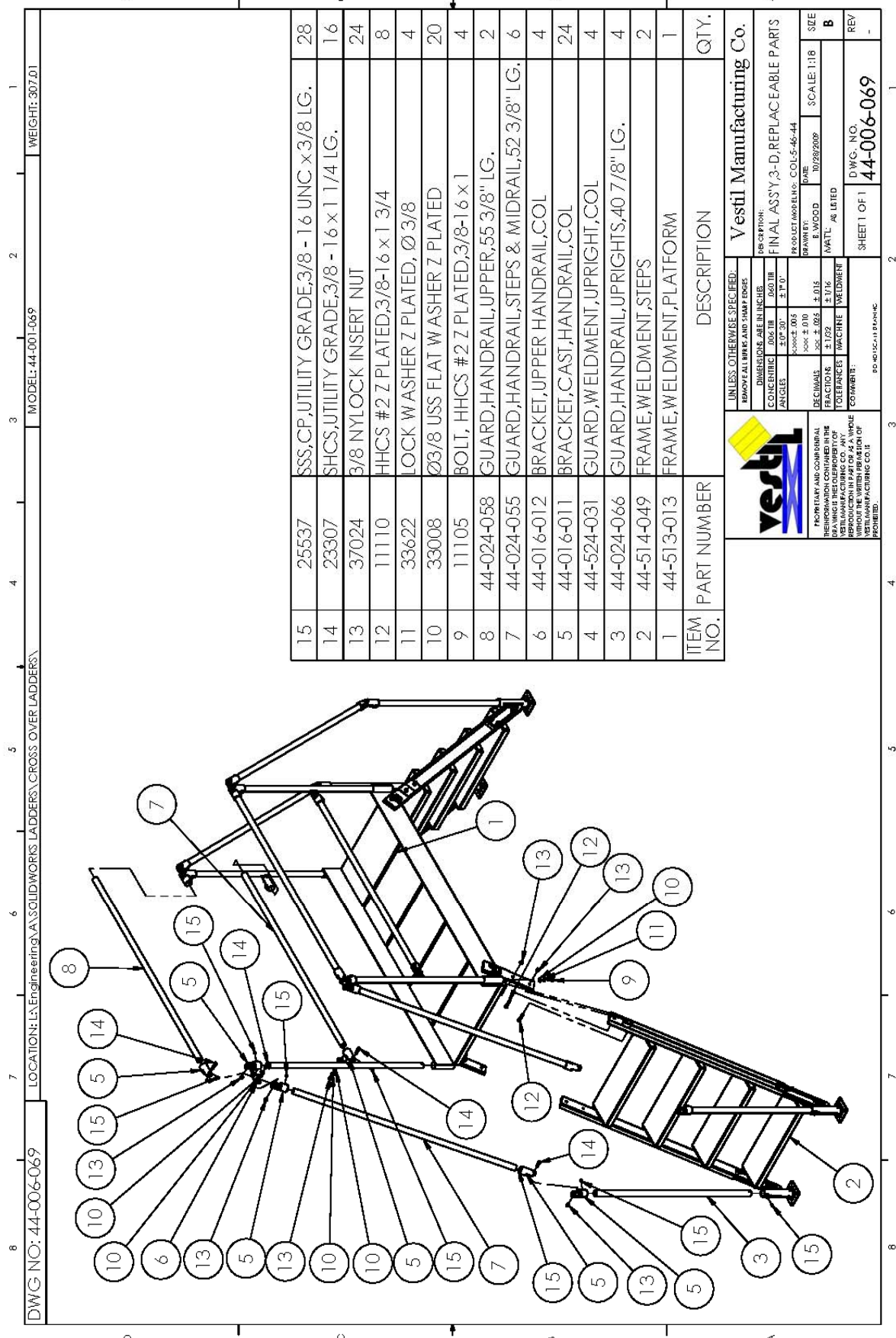
**SCALE:** 1:18

**SEE**      **B**

**REV**      **44-006-068**

SHEET 1 OF 1

# Exploded Parts Diagram and Bill of Materials



ITEM NO.	PART NUMBER	DESCRIPTION	QTY.
15	25537	SSS,CP,UTILITY GRADE,3/8 - 16 UNC.x3/8 LG.	28
14	23307	SHCS,UTILITY GRADE,3/8 - 16 x 1 1/4 LG.	16
13	37024	3/8 NYLOCK INSERT NUT	24
12	11110	HHCS #2 Z PLATED,3/8-16 x 1 3/4	8
11	33622	LOCK WASHER Z PLATED, Ø 3/8	4
10	33008	Ø3/8 USS FLAT WASHER Z PLATED	20
9	11105	BOLT, HHCS #2 Z PLATED,3/8-16 x 1	4
8	44-024-058	GUARD,HANDRAIL,UPPER,55 3/8" LG.	2
7	44-024-055	GUARD,HANDRAIL,STEPS & MIDRAIL,52 3/8" LG.	6
6	44-016-012	BRACKET,UPPER HANDRAIL,COL	4
5	44-016-011	BRACKET,CAST,HANDRAIL,COL	24
4	44-524-031	GUARD,WELDMENT,UPRIGHT,COL	4
3	44-024-066	GUARD,HANDRAIL,UPRIGHTS,40 7/8" LG.	4
2	44-514-049	FRAME,WELDMENT,STEPS	2
1	44-513-013	FRAME,WELDMENT,PLATFORM	1

**UNLESS OTHERWISE SPECIFIED:**  
 REMOVAL MARK AND SHARP EDGES

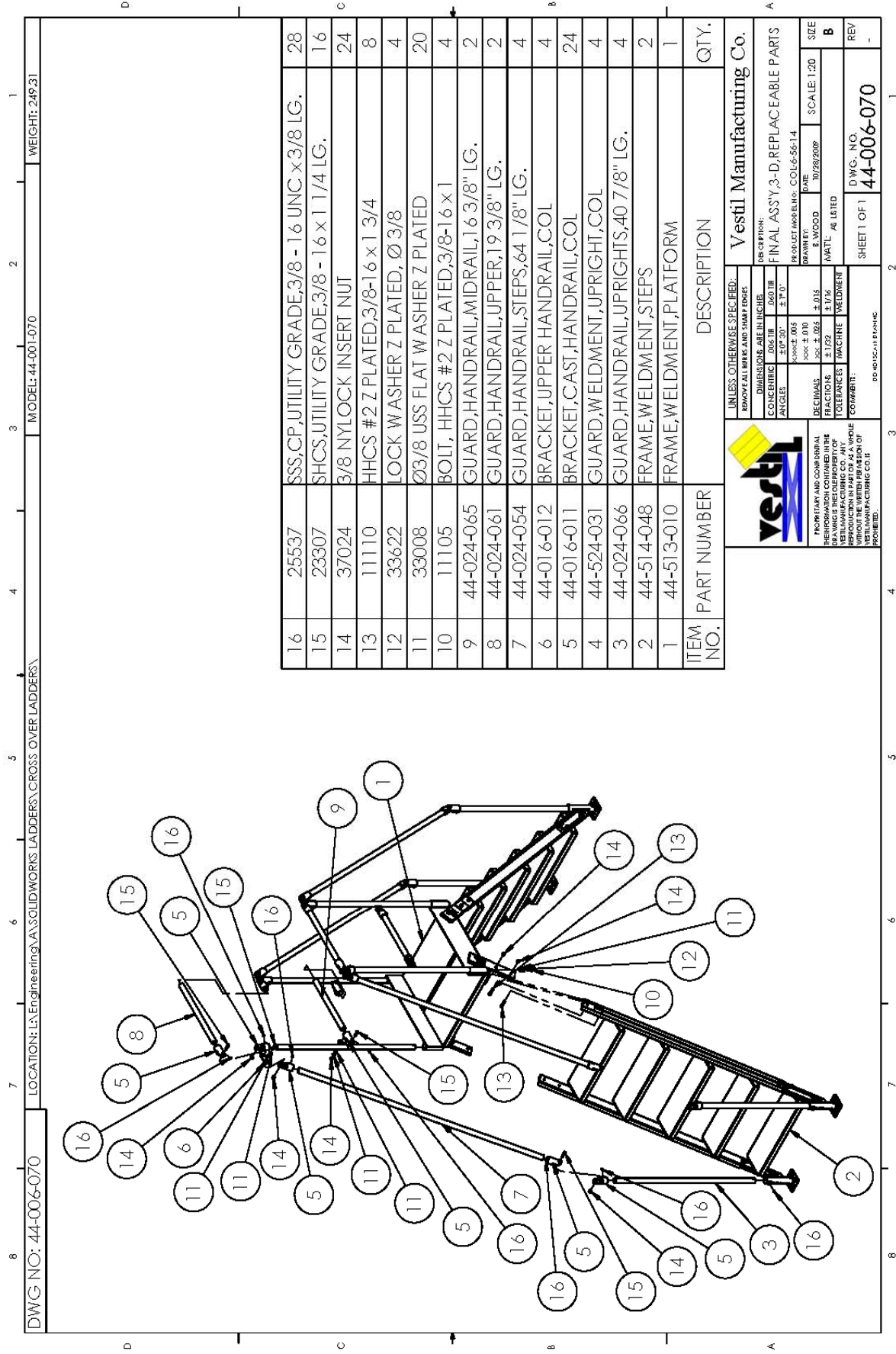
DIMENSIONS ARE IN INCHES	SCALE: 1:18
CONCENTRIC ±0.005 IN	SCALE: 1:18
±0.010 IN	
ANGLES ±1° 0'	SEE
SURFACE FINISH	B
±0.015	
DECIMALS ±0.015	SCALE: 1:18
FRACTIONS ±1/32	SEE
TOLERANCES (MACHINE WELDMENT)	
COMMENTS:	AS LISTED

DESCRIPTION: Vestil Manufacturing Co.  
 FINAL ASSY 3-D, REPLACEABLE PARTS  
 PRODUCT MODEL NO.: COL-5-46-44  
 DRAWN BY: B. WOOD 10/28/2009  
 DATE: 10/28/2009

PROPERTY AND CONFIDENTIAL INFORMATION CONTAINED HEREIN IS THE PROPERTY OF VESTIL MANUFACTURING CO. ANY REPRODUCTION IN PART OR AS A WHOLE WITHOUT THE WRITTEN PERMISSION OF VESTIL MANUFACTURING CO. IS PROHIBITED.

DWG. NO.: 44-006-069  
 LOCATION: L:\Engineering\A\SOLIDWORKS LADDERS\CROSS OVER LADDERS\  
 MODEL: 44-001-069  
 WEIGHT: 307.01  
 SHEET 1 OF 1  
 DWG. NO. 44-006-069

# Exploded Parts Diagram and Bill of Materials



DWG NO: 44-006-070      LOCATION: L:\Engineering\A\SOLIDWORKS LADDERS\CROSS OVER LADDERS\      MODEL: 44-001-070      WEIGHT: 249.31

ITEM NO.	PART NUMBER	DESCRIPTION	QTY.
16	25537	SSS,CP,UTILITY GRADE,3/8 - 16 UNC.x3/8 LG.	28
15	23307	SHCS,UTILITY GRADE,3/8 - 16 x 1 1/4 LG.	16
14	37024	3/8 NYLOCK INSERT NUT	24
13	11110	HHCS #2 Z PLATED,3/8-16 x 1 3/4	8
12	33622	LOCK WASHER Z PLATED, Ø 3/8	4
11	33008	Ø3/8 USS FLAT WASHER Z PLATED	20
10	11105	BOLT, HHCS #2 Z PLATED,3/8-16 x 1	4
9	44-024-065	GUARD,HANDRAIL,MIDRAIL,16 3/8" LG.	2
8	44-024-061	GUARD,HANDRAIL,UPPER,19 3/8" LG.	2
7	44-024-054	GUARD,HANDRAIL,STEPS,64 1/8" LG.	4
6	44-016-012	BRACKET,UPPER HANDRAIL,COL	4
5	44-016-011	BRACKET,CAST,HANDRAIL,COL	24
4	44-524-031	GUARD,WELDMENT,UPRIGHT,COL	4
3	44-024-066	GUARD,HANDRAIL,UPRIGHTS,40 7/8" LG.	4
2	44-514-048	FRAME,WELDMENT,STEPS	2
1	44-513-010	FRAME,WELDMENT,PLATFORM	1

**UNLESS OTHERWISE SPECIFIED:**

DIMENSIONS ARE IN INCHES	
CONCENTRIC	± 0.010
ANGLES	± 1° 0'
ROUNDED CORNERS	R0.015
DECIMALS	± 0.015
FRACTIONS	± 1/32
TOLERANCES	± 0.005
WELDMENTS	AS LISTED

DO NOT SCALE DRAWING

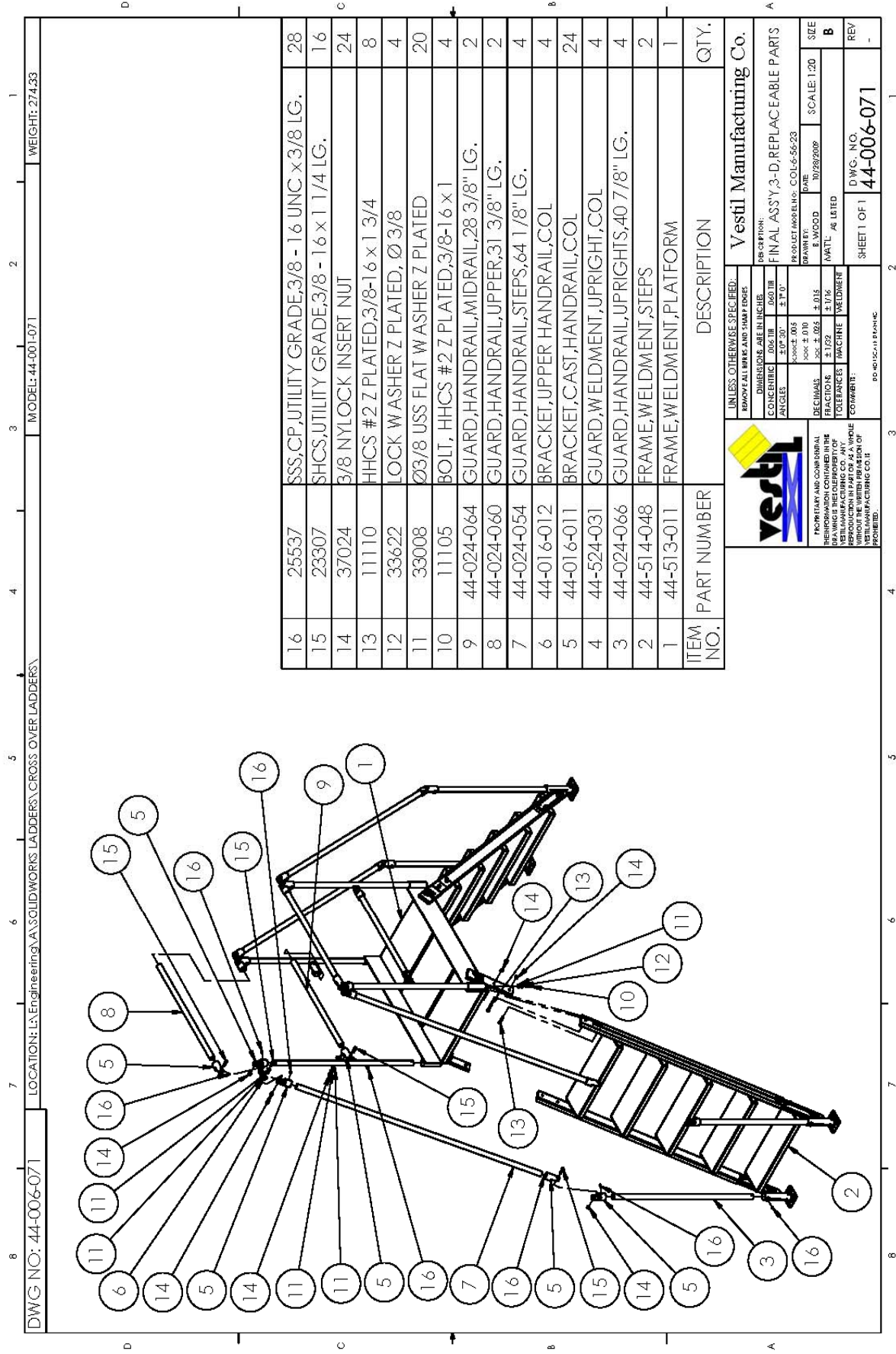
**vestil**  
PROPRIETARY AND CONFIDENTIAL INFORMATION CONTAINED HEREIN IS THE PROPERTY OF VESTIL MANUFACTURING CO. ANY REPRODUCTION IN PART OR AS A WHOLE WITHOUT THE WRITTEN PERMISSION OF VESTIL MANUFACTURING CO. IS PROHIBITED.

**DESCRIPTION:** Vestil Manufacturing Co.  
**FINAL ASSY 3-D, REPLACEABLE PARTS**

PRODUCT MODEL NO.: COL-6-56-14  
 DRAWN BY: B. WOOD      DATE: 10/28/2009      SCALE: 1:20  
 MATERIAL: AS LISTED

SHEET 1 OF 1      DWG. NO. **44-006-070**

# Exploded Parts Diagram and Bill of Materials



ITEM NO.	PART NUMBER	DESCRIPTION	QTY.
16	25537	SSS,CP,UTILITY GRADE,3/8 - 16 UNC.x3/8 LG.	28
15	23307	SHCS,UTILITY GRADE,3/8 - 16 x 1 1/4 LG.	16
14	37024	3/8 NYLOCK INSERT NUT	24
13	11110	HHCS #2 Z PLATED,3/8-16 x 1 3/4	8
12	33622	LOCK WASHER Z PLATED, Ø 3/8	4
11	33008	Ø3/8 USS FLAT WASHER Z PLATED	20
10	11105	BOLT, HHCS #2 Z PLATED,3/8-16 x 1	4
9	44-024-064	GUARD,HANDRAIL,MIDRAIL,28 3/8" LG.	2
8	44-024-060	GUARD,HANDRAIL,UPPER,31 3/8" LG.	2
7	44-024-054	GUARD,HANDRAIL,STEPS,64 1/8" LG.	4
6	44-016-012	BRACKET,UPPER HANDRAIL,COL	4
5	44-016-011	BRACKET,CAST,HANDRAIL,COL	24
4	44-524-031	GUARD,WELDMENT,UPRIGHT,COL	4
3	44-024-066	GUARD,HANDRAIL,UPRIGHTS,40 7/8" LG.	4
2	44-514-048	FRAME,WELDMENT,STEPS	2
1	44-513-011	FRAME,WELDMENT,PLATFORM	1

**UNLESS OTHERWISE SPECIFIED:**

REMOVE ALL BURRS AND SHARP EDGES	DIAMETERS ARE IN INCHES
CONCENTRIC ±.002 IN	AS TO TB ±.010"
ANGLES ±.010°	±.1°
ROUNDS ±.005	±.015
HOLES ±.010	±.025
DECIMALS ±.005	±.016
FRACTIONS ±.002	±.016
TOLERANCES	WELDMENT
COMMENTS:	

DO NOT SCALE DRAWING

**DESCRIPTION**

**Vestil Manufacturing Co.**

DESCRIPTION: FINAL ASSY,3-D,REPLACEABLE PARTS

PRODUCT MODEL NO.: COL-656-23

DRAWN BY: B. WOOD DATE: 10/28/2009

SCALE: 1:20

SEE **B**

REV

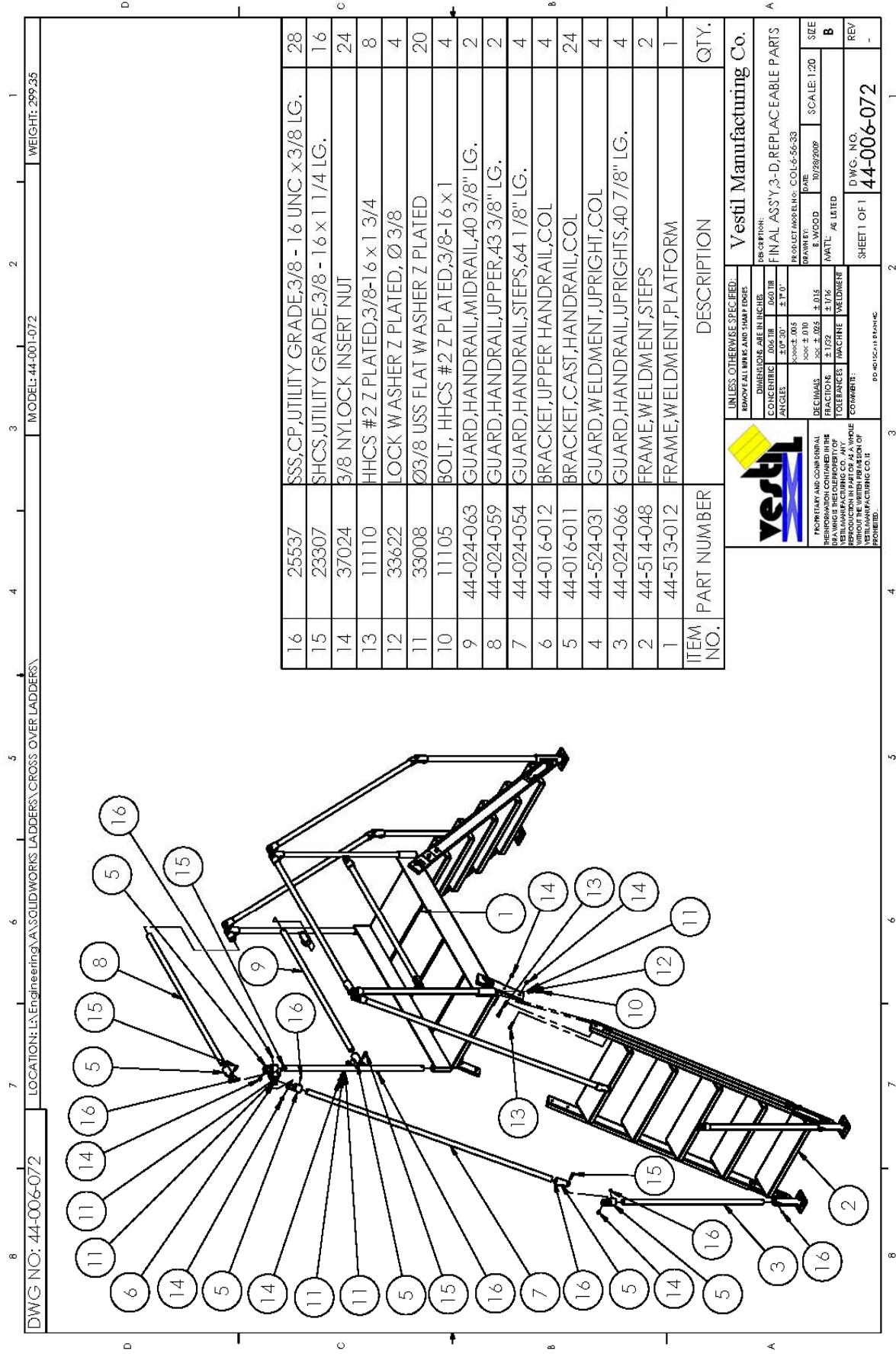
SHEET 1 OF 1

DWG. NO. **44-006-071**

PROPRIETARY AND CONFIDENTIAL  
 INFORMATION CONTAINED IN THIS  
 DRAWING IS THE PROPERTY OF  
 VESTIL MANUFACTURING CO. ANY  
 REPRODUCTION IN PART OR AS A WHOLE  
 WITHOUT THE WRITTEN PERMISSION OF  
 VESTIL MANUFACTURING CO. IS  
 PROHIBITED.

DWG NO: 44-006-071      LOCATION: L:\Engineering\A\SOLIDWORKS LADDERS\CROSS OVER LADDERS\      MODEL: 44-001-071      WEIGHT: 274.33

# Exploded Parts Diagram and Bill of Materials



ITEM NO.	PART NUMBER	DESCRIPTION	QTY.
16	25537	SSS,CP,UTILITY GRADE,3/8 - 16 UNC.x3/8 LG.	28
15	23307	SHCS,UTILITY GRADE,3/8 - 16 x 1 1/4 LG.	16
14	37024	3/8 NYLOCK INSERT NUT	24
13	11110	HHCS #2 Z PLATED,3/8-16 x 1 3/4	8
12	33622	LOCK WASHER Z PLATED, Ø 3/8	4
11	33008	Ø3/8 USS FLAT WASHER Z PLATED	20
10	11105	BOLT, HHCS #2 Z PLATED,3/8-16 x 1	4
9	44-024-063	GUARD,HANDRAIL,MIDRAIL,40 3/8" LG.	2
8	44-024-059	GUARD,HANDRAIL,UPPER,43 3/8" LG.	2
7	44-024-054	GUARD,HANDRAIL,STEPS,64 1/8" LG.	4
6	44-016-012	BRACKET,UPPER HANDRAIL,COL	4
5	44-016-011	BRACKET,CAST,HANDRAIL,COL	24
4	44-524-031	GUARD,WELDMENT,UPRIGHT,COL	4
3	44-024-066	GUARD,HANDRAIL,UPRIGHTS,40 7/8" LG.	4
2	44-514-048	FRAME,WELDMENT,STEPS	2
1	44-513-012	FRAME,WELDMENT,PLATFORM	1

**UNLESS OTHERWISE SPECIFIED:**

REMOVE ALL BURRS AND SHARP EDGES
DIMENSIONS ARE IN INCHES
CONCENTRIC ±.002 IN
PERPENDICULARITY ±.010°
ANGLES ±.1°
PLACEMENT ±.005
ROUNDS ±.010
DECIMALS ±.015
FRACTIONS ±.025
TOLERANCES ±.1/16
WELDMENTS
COMMENTS:

DO NOT SCALE DRAWING

**DESCRIPTION**

**Vestil Manufacturing Co.**

DESCRIPTION: FINAL ASSY,3-D,REPLACEABLE PARTS

PRODUCT MODEL NO.: COL-656-33

DRAWN BY: B. WOOD DATE: 10/28/2009

SCALE: 1:20

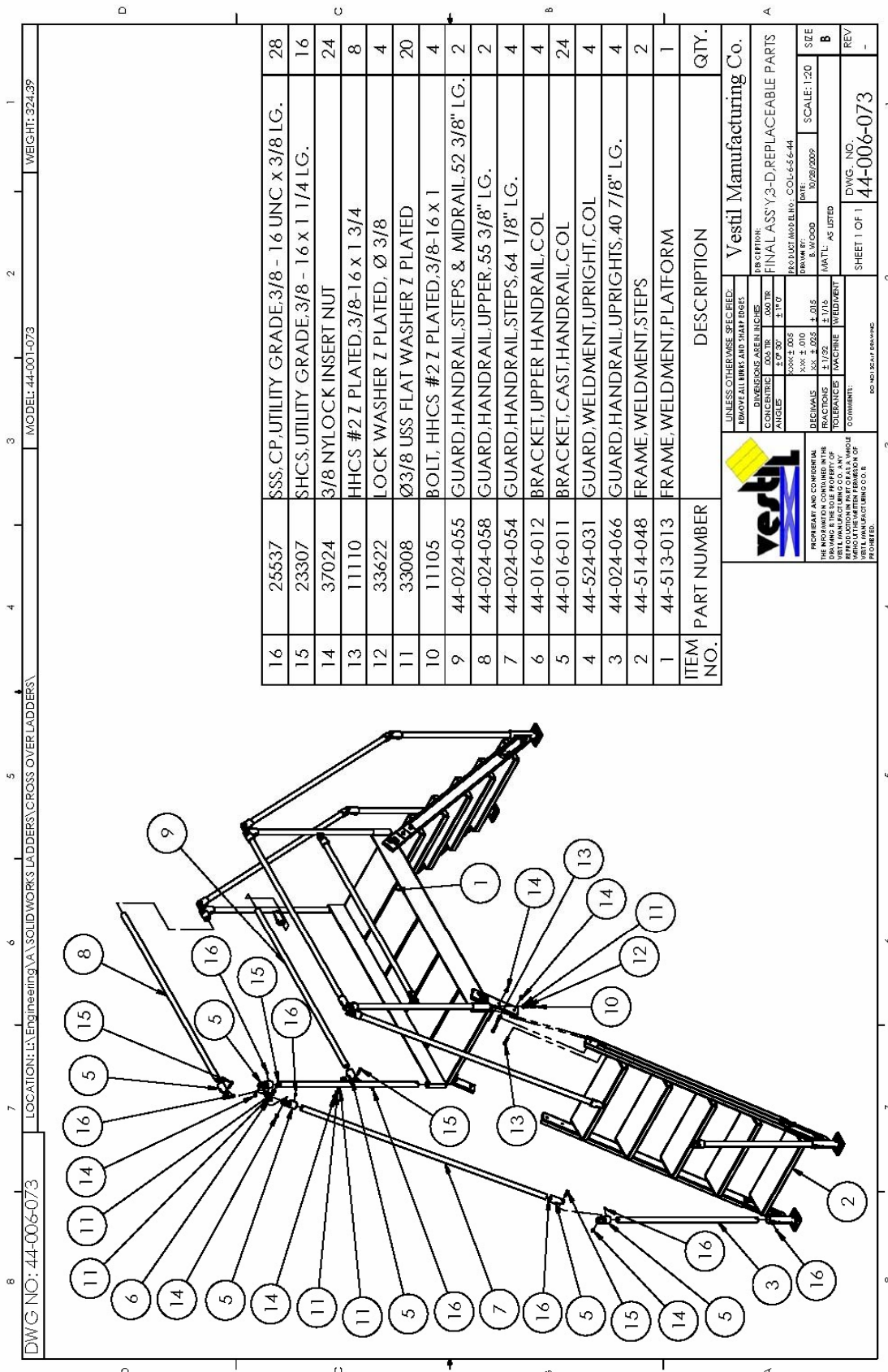
SEE SHEET B

REV SHEET 1 OF 1

DWG. NO. 44-006-072


PROPRIETARY AND CONFIDENTIAL INFORMATION CONTAINED HEREIN IS THE PROPERTY OF VESTIL MANUFACTURING CO. ANY REPRODUCTION IN PART OR AS A WHOLE WITHOUT THE WRITTEN PERMISSION OF VESTIL MANUFACTURING CO. IS PROHIBITED.

# Exploded Parts Diagram and Bill of Materials



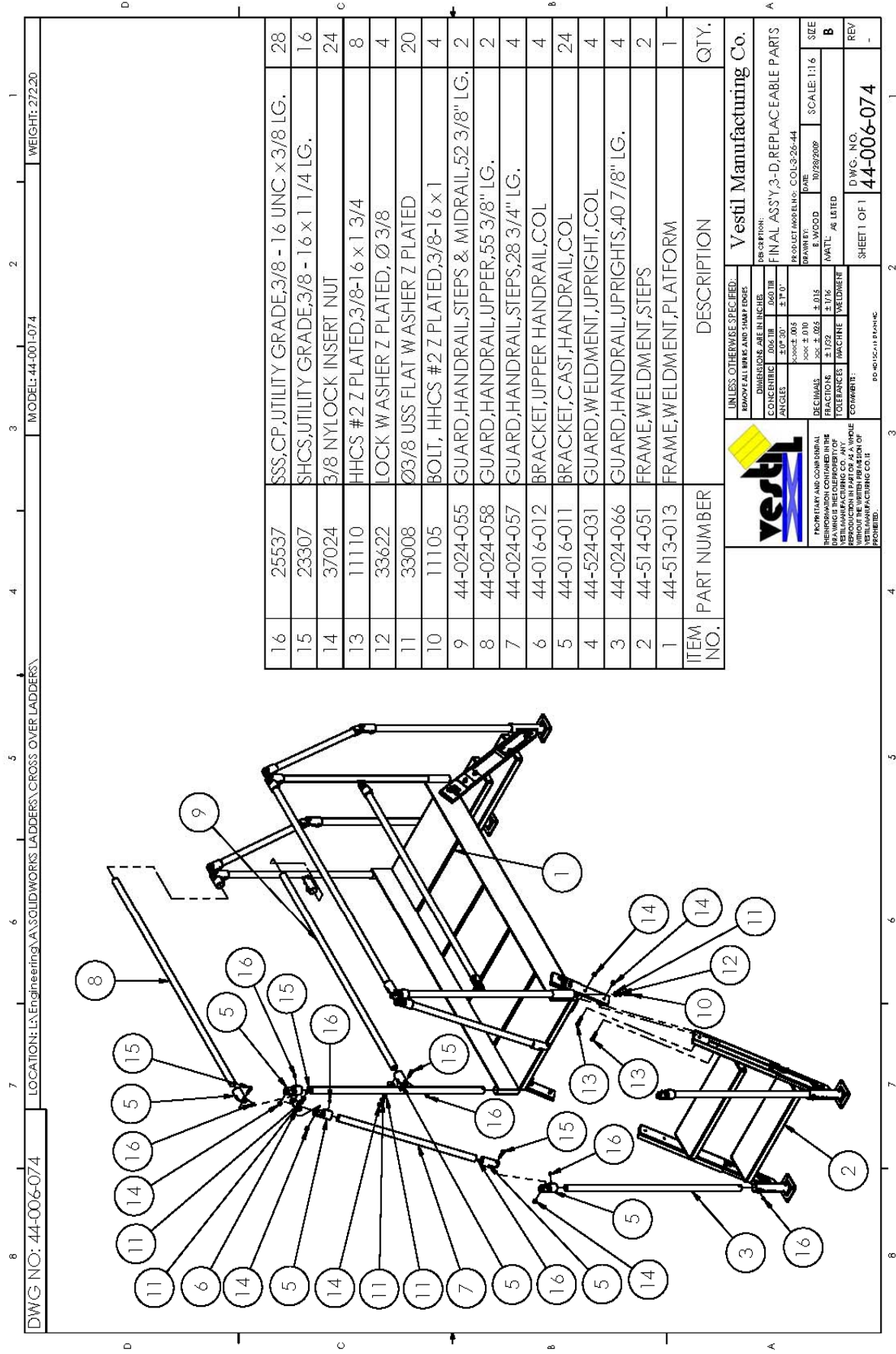
DWG NO: 44-006-073      LOCATION: L:\Engineering\A\SOLID WORKS\LA DDERS\CROSS OVER LADDERS\      MODEL: 44-001-073      WEIGHT: 324.39

ITEM NO.	PART NUMBER	DESCRIPTION	QTY.
16	25537	SSS,CP,UTILITY GRADE,3/8 - 16 UNC x 3/8 LG.	28
15	23307	SHCS,UTILITY GRADE,3/8 - 16 x 1 1/4 LG.	16
14	37024	3/8 NYLOCK INSERT NUT	24
13	11110	HHCS #2 Z PLATED,3/8-16 x 1 3/4	8
12	33622	LOCK WASHER Z PLATED, Ø 3/8	4
11	33008	Ø3/8 USS FLAT WASHER Z PLATED	20
10	11105	BOLT, HHCS #2 Z PLATED,3/8-16 x 1	4
9	44-024-055	GUARD,HANDRAIL,STEPS & MIDRAIL,52 3/8" LG.	2
8	44-024-058	GUARD,HANDRAIL,UPPER,55 3/8" LG.	2
7	44-024-054	GUARD,HANDRAIL,STEPS,64 1/8" LG.	4
6	44-016-012	BRACKET,UPPER HANDRAIL,COL	4
5	44-016-011	BRACKET,CAST,HANDRAIL,COL	24
4	44-524-031	GUARD,WELDMENT,UPRIGHT,COL	4
3	44-024-066	GUARD,HANDRAIL,UPRIGHTS,40 7/8" LG.	4
2	44-514-048	FRAME,WELDMENT,STEPS	2
1	44-513-013	FRAME,WELDMENT,PLATFORM	1

 <p>PROGRAMS AND CONFORMING DRAWINGS ARE THE PROPERTY OF VESTIL MANUFACTURING CO. REPRODUCTION IN PART OR AS A WHOLE WITHOUT THE WRITTEN PERMISSION OF VESTIL MANUFACTURING CO. IS PROHIBITED.</p>	<p>UNLESS OTHERWISE SPECIFIED: REMOVE ALL BURRS AND SHARP EDGES DIMENSIONS ARE IN INCHES CONCENTRIC .000 TIR ANGLES 3° P 30° ± .10°</p>	<p>DR OPTION: FINAL ASS Y3-D,REPLACEABLE PARTS PRODUCT AND BULK COL-63-644 DATE: 10/28/2009 SCALE: 1:20</p>
	<p>DECIMALS .0005 ± .0005 FRACTIONS 1/32 ± .001 TOLERANCES FRACTION WELDMENT COMMENT: AS LISTED</p>	<p>SIZE REV</p> <p>DWG. NO. 44-006-073</p> <p>SHEET 1 OF 1</p>



# Exploded Parts Diagram and Bill of Materials



DWG NO: 44-006-074      LOCATION: L:\Engineering\A\SOLIDWORKS LADDERS\CROSS OVER LADDERS\      MODEL: 44-001-074      WEIGHT: 272.20

ITEM NO.	PART NUMBER	DESCRIPTION	QTY.
16	25537	SSS,CP,UTILITY GRADE,3/8 - 16 UNC x3/8 LG.	28
15	23307	SHCS,UTILITY GRADE,3/8 - 16 x 1 1/4 LG.	16
14	37024	3/8 NYLOCK INSERT NUT	24
13	11110	HHCS #2 Z PLATED,3/8-16 x 1 3/4	8
12	33622	LOCK WASHER Z PLATED, Ø 3/8	4
11	33008	Ø3/8 USS FLAT WASHER Z PLATED	20
10	11105	BOLT, HHCS #2 Z PLATED,3/8-16 x 1	4
9	44-024-055	GUARD,HANDRAIL,STEPS & MIDRAIL,52 3/8" LG.	2
8	44-024-058	GUARD,HANDRAIL,UPPER,55 3/8" LG.	2
7	44-024-057	GUARD,HANDRAIL,STEPS,28 3/4" LG.	4
6	44-016-012	BRACKET,UPPER HANDRAIL,COL	4
5	44-016-011	BRACKET,CAST,HANDRAIL,COL	24
4	44-524-031	GUARD,WELDMENT,UPRIGHT,COL	4
3	44-024-066	GUARD,HANDRAIL,UPRIGHTS,40 7/8" LG.	4
2	44-514-051	FRAME,WELDMENT,STEPS	2
1	44-513-013	FRAME,WELDMENT,PLATFORM	1

UNLESS OTHERWISE SPECIFIED:  
 REMOVE ALL BURRS AND SHARP EDGES  
 DIMENSIONS ARE IN INCHES  
 CONCENTRIC ±.002 IN ±.001 IN  
 ANGLES ±.1° ±.1°  
 SURFACE FINISH  
 DECIMALS .0005 ±.010 ±.015  
 FRACTIONS .005 ±.025 ±.1/16  
 TOLERANCES MACHINE WELDMENT  
 COMMENTS: AS LISTED  
 DO NOT SCALE DRAWING

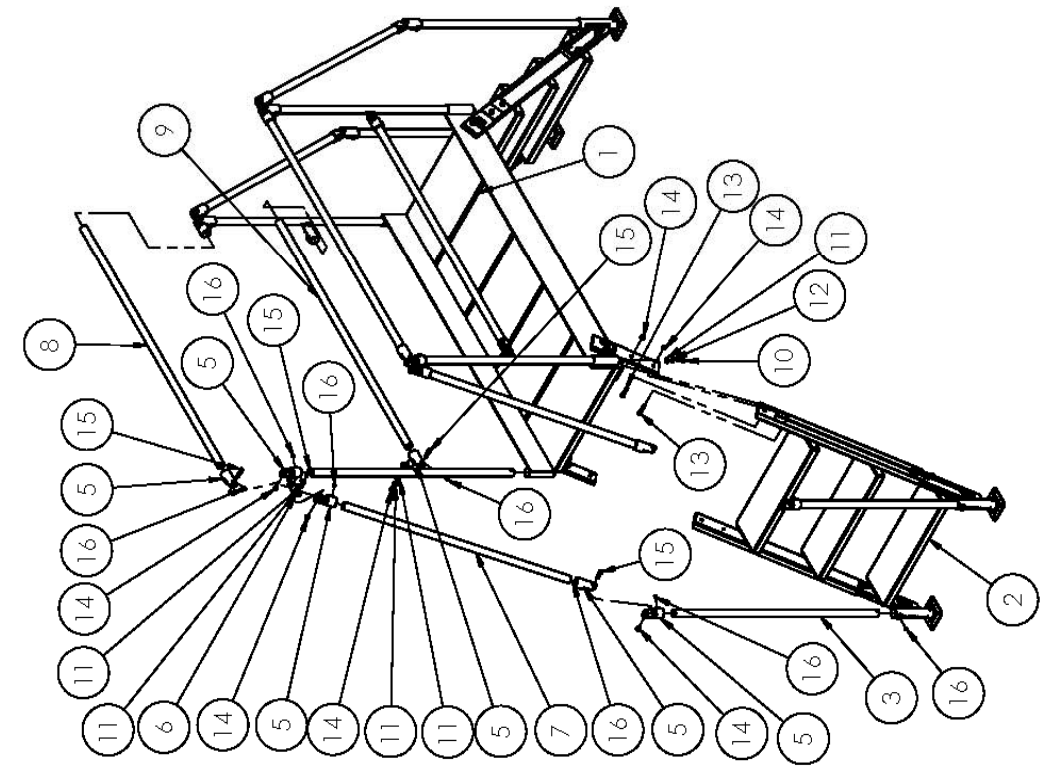
**vestil**  
 PROPRIETARY AND CONFIDENTIAL  
 INFORMATION CONTAINED IN THIS  
 DRAWING IS THE PROPERTY OF  
 VESTIL MANUFACTURING CO. ANY  
 REPRODUCTION IN PART OR AS A WHOLE  
 WITHOUT THE WRITTEN PERMISSION OF  
 VESTIL MANUFACTURING CO. IS  
 PROHIBITED.

DESCRIPTION: Vestil Manufacturing Co.  
 DESCRIPTION: FINAL ASSY,3-D,REPLACEABLE PARTS  
 PRODUCT MODEL NO.: COL3-26-44  
 DRAWN BY: B. WOOD      DATE: 10/28/2009      SCALE: 1:1.6  
 MATERIAL: AS LISTED


SHEET 1 OF 1      DWG. NO. 44-006-074      REV -

# Exploded Parts Diagram and Bill of Materials

DWG NO: 44-006-075      LOCATION: L:\Engineering\A\SOLIDWORKS LADDERS\CROSS OVER LADDERS\      MODEL: 44-001-075      WEIGHT: 289.63



ITEM NO.	PART NUMBER	DESCRIPTION	QTY.
16	25537	SSS,CP,UTILITY GRADE,3/8 - 16 UNC x 3/8 LG.	28
15	23307	SHCS,UTILITY GRADE,3/8 - 16 x 1 1/4 LG.	16
14	37024	3/8 NYLOCK INSERT NUT	24
13	11110	HHCS #2 Z PLATED,3/8-16 x 1 3/4	8
12	33622	LOCK WASHER Z PLATED, Ø 3/8	4
11	33008	Ø3/8 USS FLAT WASHER Z PLATED	20
10	11105	BOLT, HHCS #2 Z PLATED,3/8-16 x 1	4
9	44-024-055	GUARD,HANDRAIL,STEPS & MIDRAIL,52 3/8" LG.	2
8	44-024-058	GUARD,HANDRAIL,UPPER,55 3/8" LG.	2
7	44-024-056	GUARD,HANDRAIL,STEPS,40 5/8" LG.	4
6	44-016-012	BRACKET,UPPER HANDRAIL,COL	4
5	44-016-011	BRACKET,CAST,HANDRAIL,COL	24
4	44-524-031	GUARD,WELDMENT,UPRIGHT,COL	4
3	44-024-066	GUARD,HANDRAIL,UPRIGHTS,40 7/8" LG.	4
2	44-514-050	FRAME,WELDMENT,STEPS	2
1	44-513-013	FRAME,WELDMENT,PLATFORM	1



PROPRIETARY AND CONFIDENTIAL  
 INFORMATION CONTAINED IN THIS  
 DRAWING IS THE PROPERTY OF  
 VESTIL MANUFACTURING CO. ANY  
 REPRODUCTION IN PART OR AS A WHOLE  
 WITHOUT THE WRITTEN PERMISSION OF  
 VESTIL MANUFACTURING CO. IS  
 PROHIBITED.

**UNLESS OTHERWISE SPECIFIED:**

DIMENSIONS ARE IN INCHES	
CONCENTRIC	±.00078
ANGLES	±.1°
PLACES	±.005
DECIMALS	±.015
FRACTIONS	±.005
TOLERANCES	±.002
WELDMENT	±.1/16

FINISHES: (MACHINE) (WELDMENT)  
 (NONE)  
 (NONE)

DRAWING: 10/28/2009  
 B. WOOD  
 SCALE: 1:18  
 DATE: 10/28/2009  
 MATL: AS LISTED

**Vestil Manufacturing Co.**

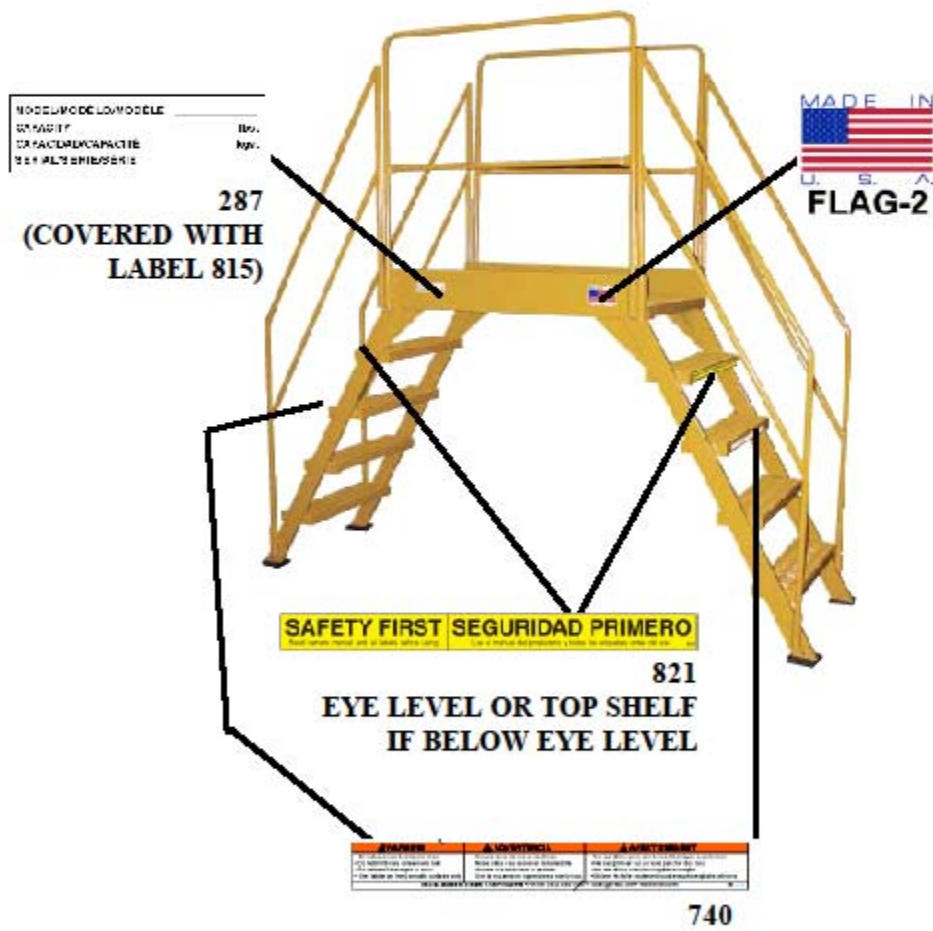
DESCRIPTION: FINAL ASSY 3-D, REPLACEABLE PARTS

PRODUCT MODEL NO.: COL-436-44

SHEET 1 OF 1      DWG. NO. 44-006-075

# Label Placement Diagram

# COL



# CROSS-OVER LADDER

## LIMITED WARRANTY

Vestil Manufacturing Corporation ("Vestil") warrants this product to be free of defects in material and workmanship during the warranty period. Our warranty obligation is to provide a replacement for a defective original part if the part is covered by the warranty, after we receive a proper request from the warrantee (you) for warranty service.

### Who may request service?

Only a warrantee may request service. *You are a warrantee if* you purchased the product from Vestil or from an authorized distributor AND Vestil has been fully paid.

### What is an "original part"?

An original part is a part used to make the product as shipped to the warrantee.

### What is a "proper request"?

A request for warranty service is proper if Vestil receives: 1) a photocopy of the Customer Invoice that displays the shipping date; AND 2) a written request for warranty service including your name and phone number. Send requests by any of the following methods:

Mail  
Vestil Manufacturing Corporation  
2999 North Wayne Street, PO Box 507  
Angola, IN 46703

Fax  
(260) 665-1339  
Phone  
(260) 665-7586

Email  
sales@vestil.com

In the written request, list the parts believed to be defective and include the address where replacements should be delivered.

### What is covered under the warranty?

After Vestil receives your request for warranty service, an authorized representative will contact you to determine whether your claim is covered by the warranty. Before providing warranty service, Vestil may require you to send the entire product, or just the defective part or parts, to its facility in Angola, IN. The warranty covers defects in the following *original* dynamic components: motors, hydraulic pumps, electronic controllers, switches and cylinders. It also covers defects in *original* parts that wear under normal usage conditions ("wearing parts"): bearings, hoses, wheels, seals, brushes, batteries, and the battery charger.

### How long is the warranty period?

The warranty period for original components is 90 days. The warranty period begins on the date when Vestil ships the product to the warrantee. If the product was purchased from an authorized distributor, the period begins when the distributor ships the product. Vestil may extend the warranty period for products shipped from authorized distributors by *up to* 30 days to account for shipping time.

### If a defective part is covered by the warranty, what will Vestil do to correct the problem?

Vestil will provide an appropriate replacement for any *covered* part. An authorized representative of Vestil will contact you to discuss your claim.

### What is not covered by the warranty?

1. Labor;
2. Freight;
3. Occurrence of any of the following, which automatically voids the warranty:
  - Product misuse;
  - Negligent operation or repair;
  - Corrosion or use in corrosive environments;
  - Inadequate or improper maintenance;
  - Damage sustained during shipping;
  - Collisions or other incidental contacts causing damage to the product;
  - Unauthorized modifications: DO NOT modify the product IN ANY WAY without first receiving written authorization from Vestil. Modification(s) might make the product unsafe to use or might cause excessive and/or abnormal wear.

### Do any other warranties apply to the product?

Vestil Manufacturing Corp. makes no other express warranties. All implied warranties are disclaimed to the extent allowed by law. Any implied warranty not disclaimed is limited in scope to the terms of this Limited Warranty.

