

Eagle Manufacturing Company Wellsburg, WV

Phone Number: 304-737-3171 Fax Number: 304-737-1752

Model 16-DRAIN Containment Drain

Bill of Material:

- | | |
|--|--------------------------|
| (1) Elbow/Nipple Assembly | (1) 1 Gallon Plastic bag |
| (1) Model <u>16-DRAIN</u> Drain Assembly | (1) Instruction Sheet |

Drain Assembly Installation Instructions:

Step 1: Remove $\frac{3}{4}$ " Black Plug from $\frac{3}{4}$ " NPT port on the side of Containment Platform.

Step 2: Thread Elbow/Nipple Assembly into $\frac{3}{4}$ " NPT port in side of Platform.

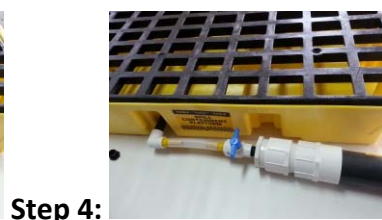
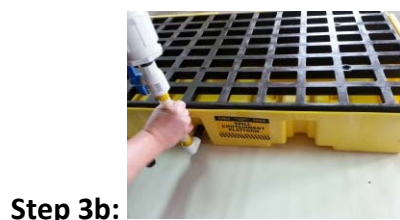
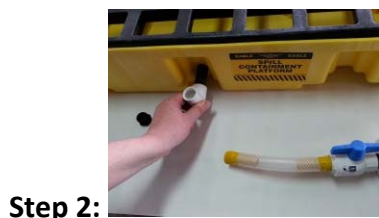
(Turn elbow in up position to allow Drain Assembly to be threaded into $\frac{3}{4}$ " NPT Elbow)

Step 3a: Hold Drain Assembly vertically and thread $\frac{3}{4}$ " MNPT Yellow Adapter End into Elbow.

Step 3b: Hold and spin entire Drain Assembly to thread Yellow Adapter into Elbow.

Step 4: Turn elbow 90° and lower the Drain Assembly onto the ground or floor.

Step 5: Turn the Ball Valve Blue Handle 90° to full flow position through the Drain Assembly.



Visit our website at www.eagle-mfg.com for an instructional video of this product.

Eagle Manufacturing Company Wellsburg, WV

Phone Number: 304-737-3171 Fax Number: 304-737-1752

Model 16-Drain Containment Drain

When the Absorbent Sock in the Drain Assembly is fully saturated Flow is stopped at the discharge of the Drain Assembly then the Absorbent Sock in the Drain Assembly must be replaced.

Replacement Absorbent Sock Instructions:

Step 1: Close Ball Valve Blue Handle (turn 90°) to shut off flow through the Drain Assembly.

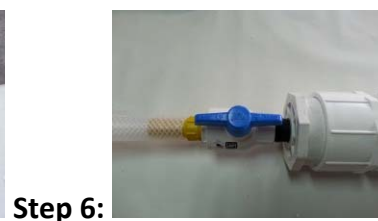
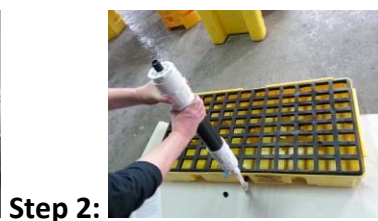
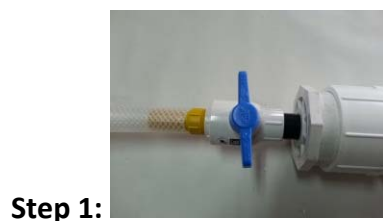
Step 2: Turn elbow and rotate Drain Assembly vertically 90° and unthread Top Section.

Step 3: Remove Absorbent Sock from Drain Assembly and place in 1 Gallon Plastic bag.

Step 4: Place new Absorbent Sock in Drain Assembly and replace threaded Top Section.

Step 5: Turn elbow 90° and lower the Drain Assembly onto the ground or floor.

Step 6: Turn the Ball Valve Blue Handle 90° to full flow position through the Drain Assembly.



Containment Drain Assembly Replacement Absorbent Sock Kit Part Number 16-FILTER

Visit our website at www.eagle-mfg.com for an instructional video of this product.