

# BILL OF MATERIALS

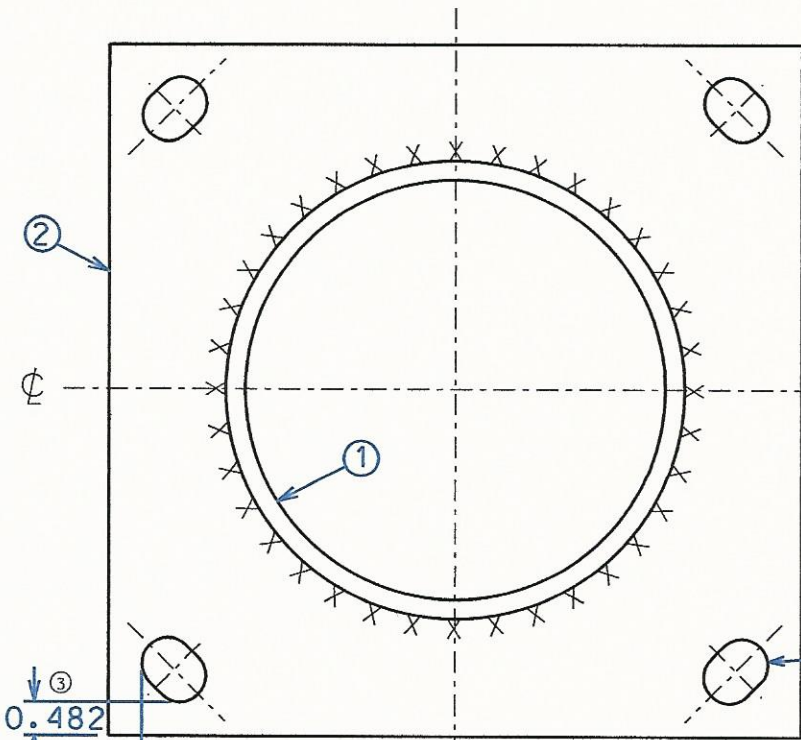
MK.	QTY.	ITEM	DESCRIPTION
①	1	PIPE	6" SCH. 40 STEEL <sup>④</sup>
②	1	PLATE	$\frac{3}{8}$ " STEEL

REV. 1.5-23-01.JGG: CHANGE SHAPE OF SLOT SLOTS FROM 8.006 O.C.

REV. 2.12-13-01.JGG: ADD MODEL NOS.

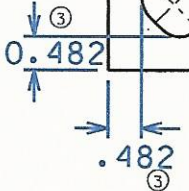
REV. 3.10-14-02.JGG: SLOTS FROM 0.625" W. SLOT FROM 0.5" FROM EDGES.

REV. 4.4-24-15.STT: ADDED ALTERNATE STEEL PIPE IN 6" SCHEDULE 10 STEEL FOR NEW MODEL NUMBERS

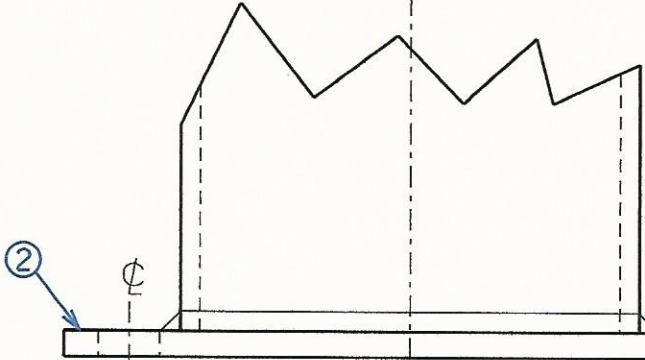
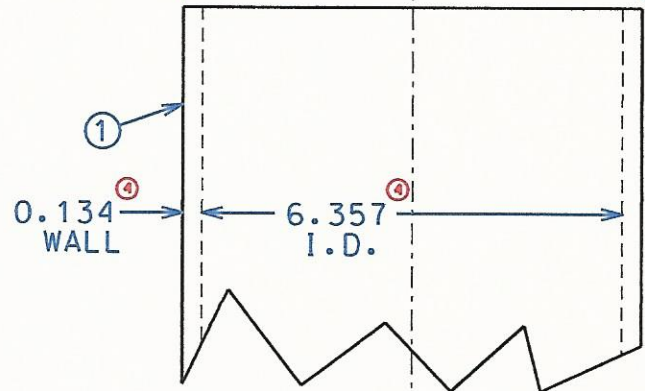


10 SQ.

0.750 WIDE x 1 LONG SLOT<sup>③</sup>  
4 PLACES



MODEL<sup>②</sup> #1763  
MODEL<sup>②</sup> #1764  
36" OR 42"  
MODEL<sup>④</sup> #1763-10  
MODEL<sup>④</sup> #1764-10



ISO APRVL. FOR 4 REV.: **STT JCB**

FILLET WELD  
.280 x .280  
ALL AROUND

EAGLE MFG. CO.  
WELLSBURG, WV  
DWG. NO. 519  
6" DIAM. BOLLARDS  
J.G.G., 5-15-01

This drawing and the information it contains are the property of Eagle Manufacturing Company and may not be used or reproduced without the express written permission of the company.