



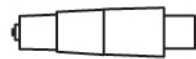




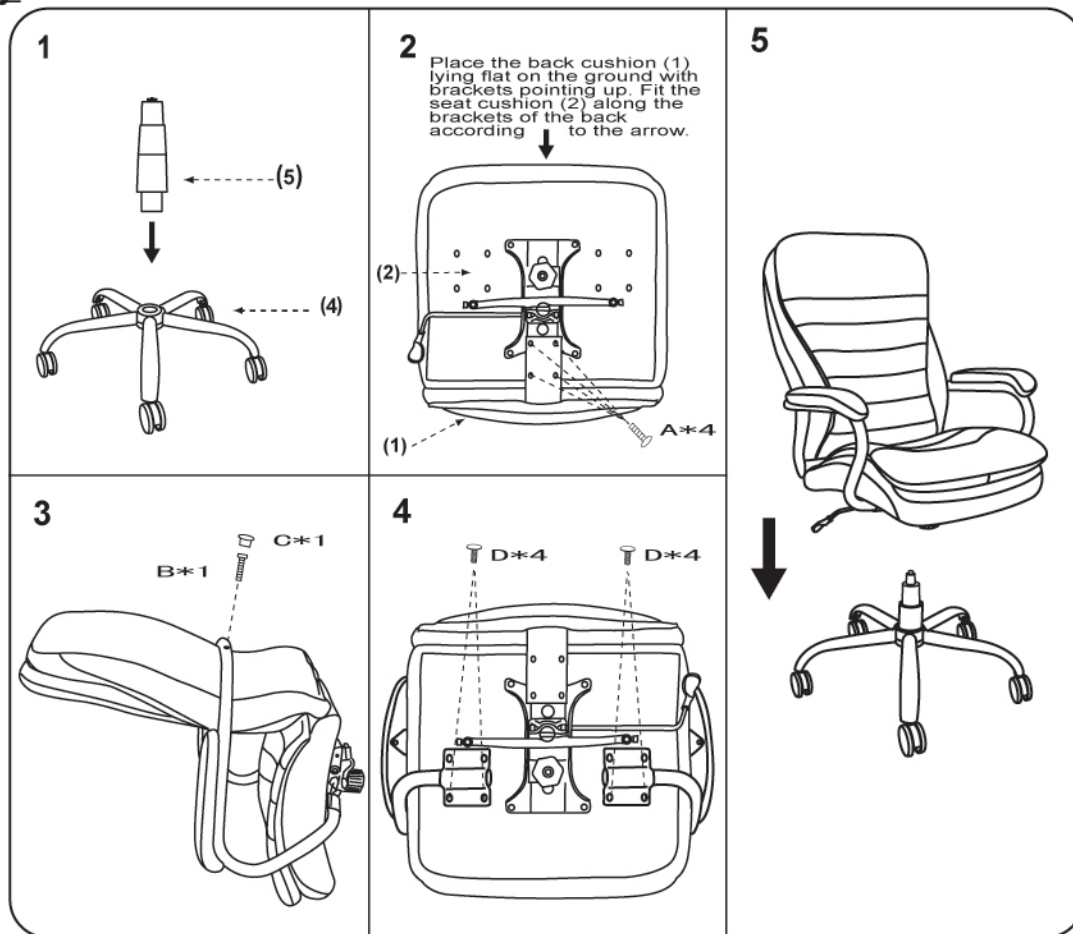


Please unscrew all hardware from cushion before assembly.
Por favor de destornillar todos los tornillos del cojín antes de assamblar la silla.

MODEL : B991

(1)	(2)	(3)
		
Back	Seat & Mechanism	Arm Frame
(4)	(5)	
		
L370 W/Casters	Knee Tilt Gas Lift	
(A)-4pcs		M6*30
(B)-1pcs		M6*55
(C)-1pcs		CAP
(D)-8pcs		M6*25



Insert and loosely tighten all screws. When assembly is completed, fully tighten all screws before using. This chair is only intended for sitting. Any other use will void the warranty.

