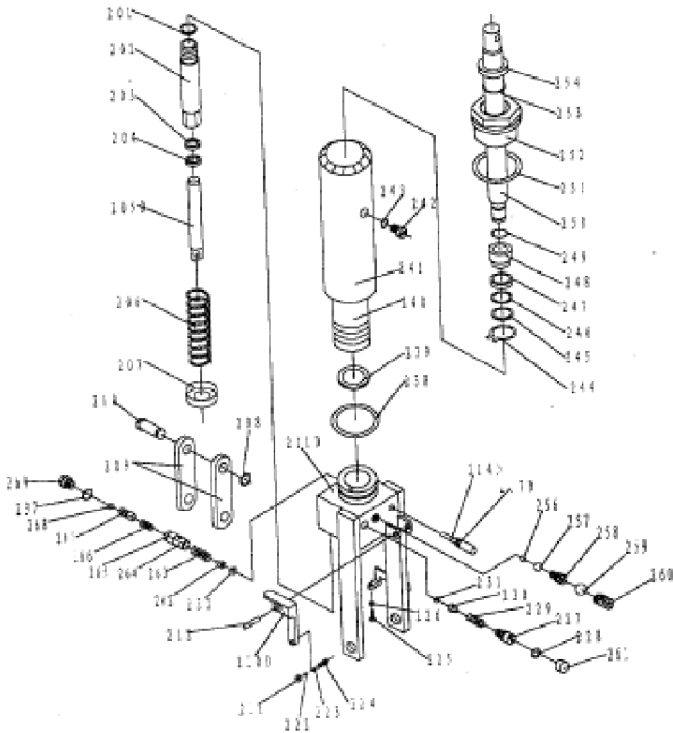
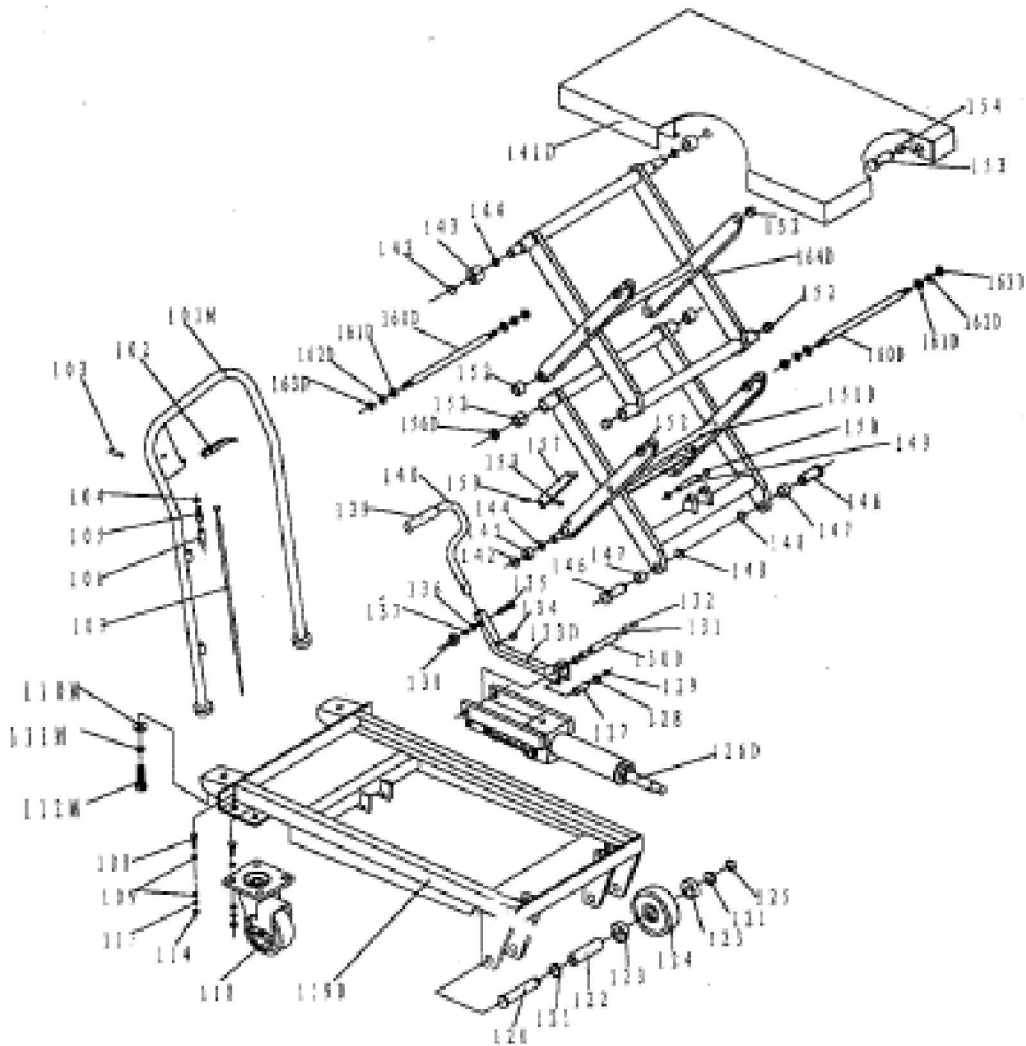


260204

- Overall width: 19.5"
- Overall height: 37"
- Overall depth: 45.5"
- Capacity: 770 lbs
- Weight: 227 lbs
- Locking Caster

REPLACEMENT PARTS				
1	260210	SEAL KIT		—
2	260211	PUMP		—
3	260251	HANDLE RELEASE ASSY.		—
4	273404	CASTER		2
5	273405	WHEEL		2
6	273406	BEARING		—



DOUBLE SCISSORS HIGH LIFT TABLE

- Fixed handle
- Chrome plated handle and foot pedal
- Lever release handle
- 5" x 1.5" moldon polyurethane wheels with locking swivel
- Foot operated pump
- Table is 35.5" x 19.5"
- Raised height: 51"
- Lowered height; 14"

THIS DRAWING IN ALL PARTICULARS IS WESCO INDUSTRIAL PRODUCTS INC. PROPERTY. ALL RIGHTS OF DESIGN, INVENTION OR USE OF ARE RESERVED.

					APP	WESCO INDUSTRIAL PRODUCTS INC.						
					ECN & DATE	REVISIONS	LANSDALE			PENNA. 19446		
							PART NAME			DRAWN: JCR 02-05-85		
							LT-770DSL			CHECKED:		
							DOUBLE-SCISSORS HIGH LIFT			APP. ENGR.		
							TOLERANCE UNLESS OTHERWISE SPECIFIED			SCALE: 7" = 1"		
							FRACTION 3 PLACE DECIMAL 2 PLACE DECIMAL					
							± 1/64 ± .005 ± .01					
							ANGULAR ± 1-1/2" SHEET 1 OF 1		B- 260204			
					REV.		BREAK ALL SHARP EDGES AND REMOVE ALL BURRS		REV			