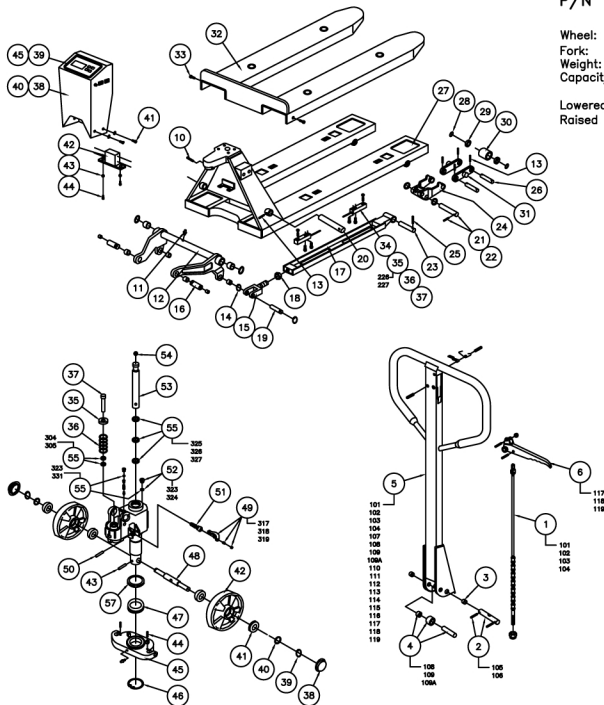


P/N 272936

Wheel: Polyurethane  
 Fork: 27.5" x 47.5"  
 Weight: 336 lbs  
 Capacity: 5,000 lbs

Lowered fork height: 2.9"  
 Raised fork height: 8"



36 270205		230 DISPLAY UNIT		1	
39	270206	231	COVER BOARD	1	
40	270207	232	FRATON BOX	1	
41	270209	233	BOLT	4	
42	270210	234	BOX OF CABLE	1	
43	270212	235	NUT	2	
44	270215	236	SCREW	2	
45	270218	237	BOLT	4	
46	270224		MOTHERBOARD OF DISPLAY	1	

## JACK PARTS LIST

50	270032	301	SPRING CAB	1	
51	270033	302	SPRING	1	
52	270035	303	PUMP PISTON	1	
53	272665	308	DUST COVER	2	
54	270036	307	SPRING WASHER	2	
55	270037	308	WASHER	1	
56	272325	309	BEARING	4	
57	272663	310	POLY STEERING WHEEL	1	
58	270038	311	ELASTIC PIN	1	
59	270041	312	ELASTIC PIN	2	
60	270043	313	THRUST PLATE	1	
61	270044	314	RETAINING RING	1	
62	272100	315	THRUST PLATE	1	
63	270045	318	SHAFT	1	
64	270050		KIT: LEVER PLATE	1	
		317	NUT	1	
		318	SCREW	1	
		319	LEVER PLATE	1	
		320	ELASTIC PIN	1	
65	270053	320	ELASTIC PIN	1	
66	272664	321	VALVE CARTRIDGE	1	
67	270057		KIT: SCREW/WASHER	1	
		323	SEAL WASHER	1	
		324	SCREW PLUG	1	
68	270058	328	PISTON ROD	1	
69	270059	329	STEEL BALL	1	
70	270061		KIT: SEAL	1	
		304	DUST RING	1	
		305	SEAL	1	
		323	SEAL WASHER	1	
		325	SEAL	1	
		326	O-RING	1	
		327	DUST RING	1	
		328	O-RING	1	
		331	O-RING	1	
56	272661		REPLACEMENT PUMP	1	
71	276011	337	BEARING COVER	1	

## HANDLE PARTS LIST (Type "A")

1	270060		ASS'Y: HANDLE RELEASE	1	
		101	RELEASE ROD	1	
		102	CHAIN	1	
		103	ADJUSTING BOLT	1	
		104	ADJUSTING NUT	1	
2	270004		KIT: AXLE/PIN	1	
		105	AXLE WITH HOLE	1	
		106	ELASTIC PIN	2	
3	273008	107	BUSHING	2	
4	270005		KIT: PRESSURE ROLLER	1	
		108	ROLLER PIN	1	
		109	PRESSURE ROLLER	1	
		109A	BUSHING	1	
5	270007		KIT: HANDLE ASSEMBLY	1	
		101	RELEASE ROD	1	
		102	CHAIN	1	
		103	ADJUSTING BOLT	1	
		104	ADJUSTING NUT	1	
		273008	BUSHING	2	
		108	ROLLER PIN	1	
		109	PRESSURE ROLLER	1	
		109A	BUSHING	1	
		110	DRAW BAR	1	
		111	STOP RUBBER	1	
		112	ELASTIC PIN	1	
		113	BLADE SPRING	1	
		114	SPRING	1	
		115	ELASTIC PIN	1	
		116	ELASTIC PIN	1	
		117	CONTROL HANDLE	1	
		118	ROLLER	1	
		119	ELASTIC PIN	1	
6	272791		KIT: CONTROL HANDLE	1	
		117	CONTROL HANDLE	1	
		118	ROLLER	1	
		119	ELASTIC PIN	1	

## FORK FRAME PARTS LIST

10	270151	201	ELASTIC PIN	1	
11	270159	202	OIL-HOLDER	1	
12	270160	203	ROCK-ARM	1	
13	270164	204	ELASTIC PIN	6	
14	270172	205	RETAINING RING	4	
15	270174	206	JOINT	2	
16	270178	207	SHAFT	2	
17	270179	208	PUSHING ROD	2	
18	270180	209	NUT	2	
19	270181	210	PIN	1	
20	270182	211	LONG SHAFT	1	
21	270183	212	SHAFT	2	
22	270184	213	ELASTIC PIN	2	
23	270185	214	SHAFT	2	
24	270186	215	FRAME OF ROLLER	2	
25	270187	216	ELASTIC PIN	2	
26	270189	217	SHAFT OF ROLLER	4	
27	270190	218	FORK FRAME	1	
28	270191	219	WASHER	8	
29	270193	220	BEARING	8	
30	270194	221	ROLLER	4	
31	270195	222	LINKING PLATE	4	
32	270197	223	PLATFORM	1	
33	270198	224	BOLT	2	
34	270199	225	LOAD CELL	4	
35	270200		KIT: PIN/O-RING	1	
		226	PIN	4	
		227	O-RING	8	
36	270202	228	BOLT	8	
37	270204	229	SITE OF LOAD CELL	4	

## SCALE PALLET JACK

- Weighing accuracy  $\pm 4.4$  lbs., or 2.0 kg
- LCD display scale.
- Metter-Toledo Hawk scale/sensor.
- UL approved scale operates on six D cell batteries or AC.
- Charge rechargeable type "D" size batteries without removing from display.
- Three position hand control.
- 205° turning radius.
- 2 year pump warranty.
- 7" wide forks.
- 7" moldon polyurethane steering wheels.
- 3" moldon polyurethane oad wheels.

PRINT ISSUED

REV 11, 2008

WESCO MANUFACTURING  
ENGINEERING DEPARTMENT

WESCO INDUSTRIAL PRODUCTS INC.

NORTH WALKER, ILLINOIS PERMA 19446

FORMA KLL 11-22-08

OLD DISPLAY USED UNTIL MAY 2007

SCALE PALLET JACK

SCALE PALLET JACK

SCALE PALLET JACK

SCALE PALLET JACK

D-272936